



FIG Working Week 2024

19-24 May

Accra, Ghana

Your World, Our World:
Resilient Environment
and Sustainable
Resource Management
for All

Documentation of Property Boundaries in Norway – the Røst Case

Leiv Bjarte Mjøs and Arve Leiknes

Western Norway University of Applied Sciences



ORGANISED BY



PLATINUM SPONSORS





FIG Working Week 2024

19-24 May

Your World, Our World:
Resilient Environment
and Sustainable
Resource Management
for All

Accra, Ghana

Background

Since 2010 a nationwide and seamless digital cadastral map is in place in Norway
 Based on different sources
 Quality can be poor, especially in rural and remote areas
 Detailed and cumbersome rules for correcting the map
 Since 2020 research and field courses at Røst
 Goal: to test out simplified methods for correcting the map, and improve map quality

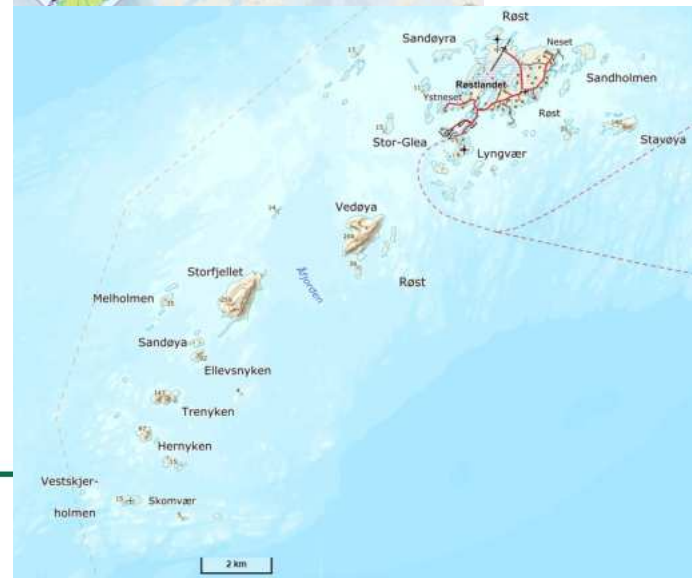




FIG Working Week 2024

19-24 May

Accra, Ghana

Your World, Our World:
Resilient Environment
and Sustainable
Resource Management
for All

Cadastral basics – rural areas

- Economic mapping from 1960
- Prior to 1980, no cadastral surveying in rural areas
- Cadastral surveying reform in 1980: Nationwide cadastral surveying, to be the responsibility of the municipalities
- Freedom of contract applies for property boundaries, the cadastral map has no legal force
- Boundary disputes to be settled in court
- Boundary marking in field will in general have evidentiary force

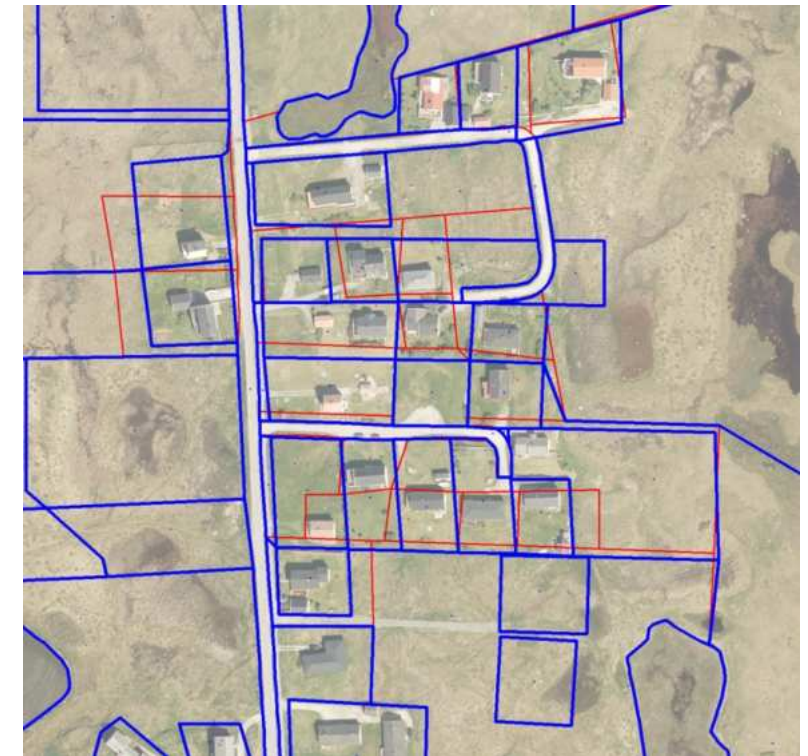




FIG Working Week 2024

19-24 May

Accra, Ghana

Your World, Our World:
Resilient Environment
and Sustainable
Resource Management
for All

Sources of boundary information – land consolidation maps





FIG Working Week 2024

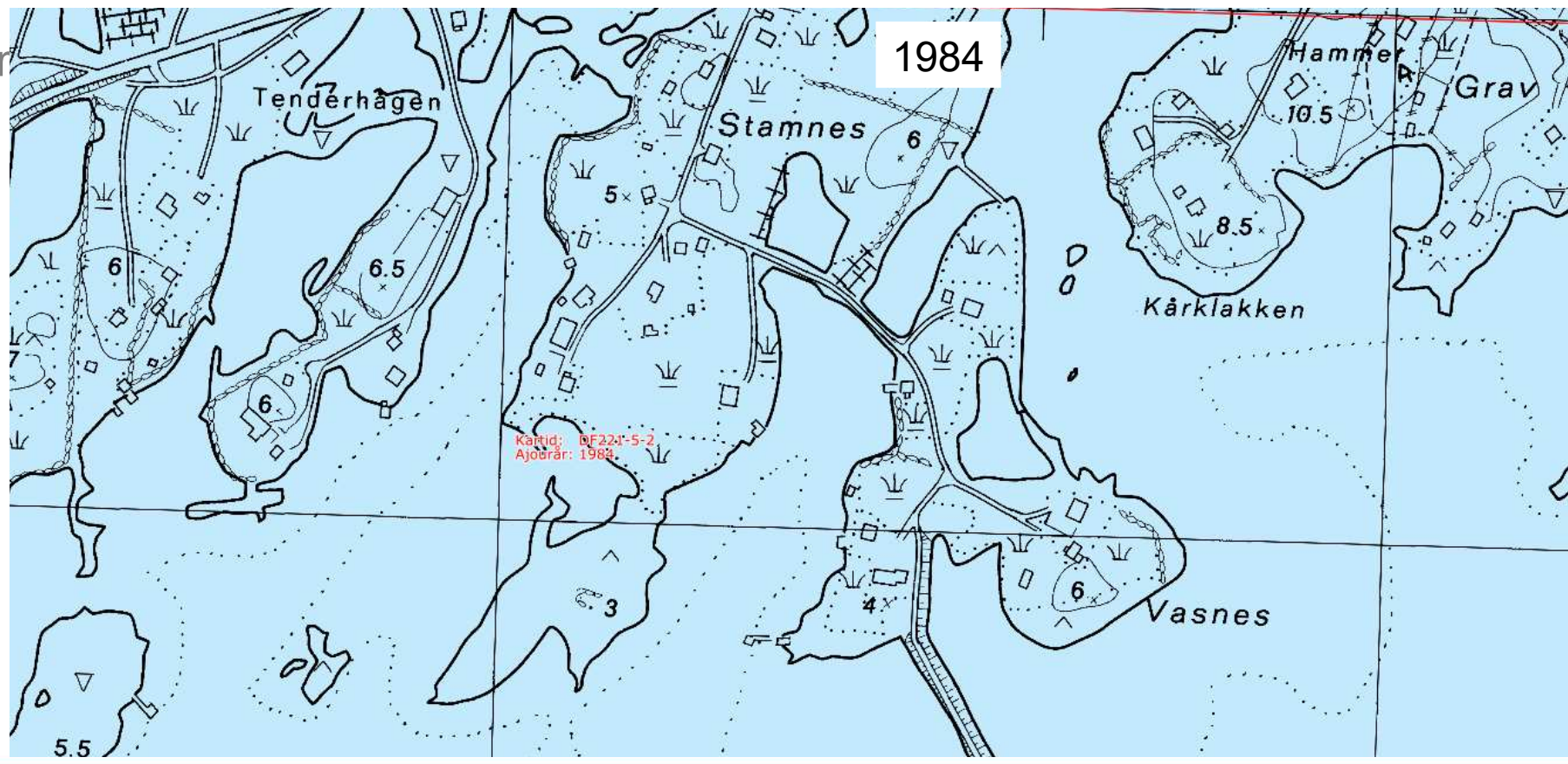
19-24 May

Accra, Ghana

Your World, Our World:
Resilient Environment
and Sustainable
Resource Management
for All

Sources of boundary information – economic maps

- Exam



ORGANISED BY



PLATINUM SPONSORS





FIG Working Week 2024

19-24 May

Accra, Ghana

Your World, Our World:
Resilient Environment
and Sustainable
Resource Management
for All

The basis for the cadastral map at Røst is 4 land consolidation maps (1959)



ORGANISED BY





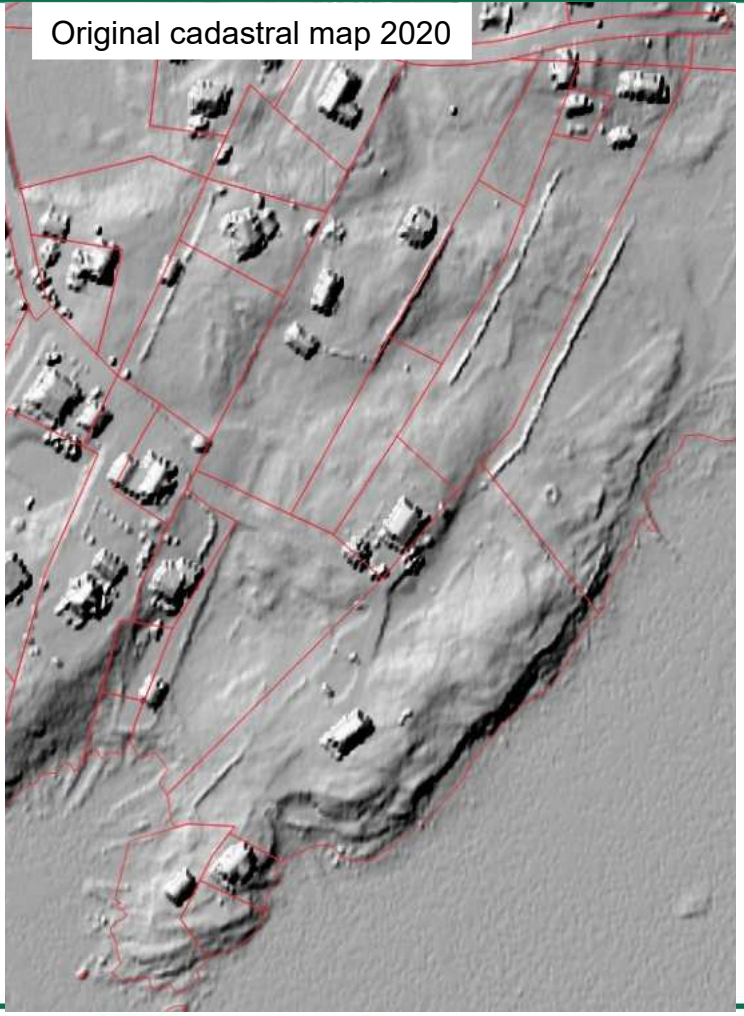
FIG Working Week 2024

19-24 May

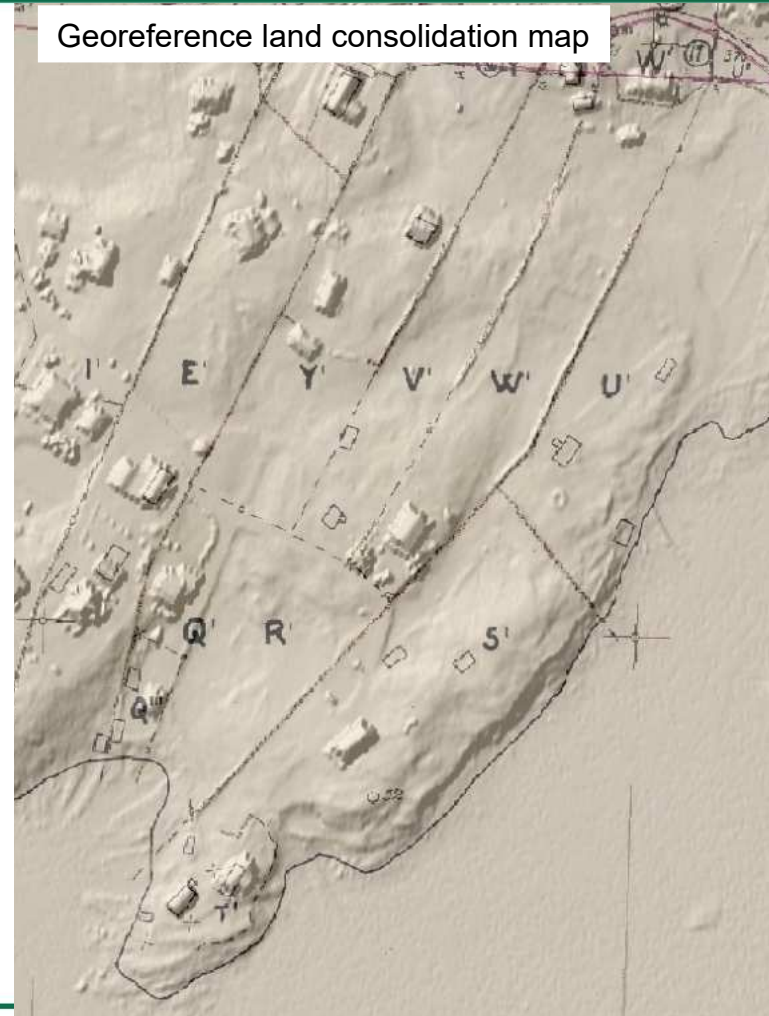
Accra, Ghana

Your World, Our World:
Resilient Environment
and Sustainable
Resource Management
for All

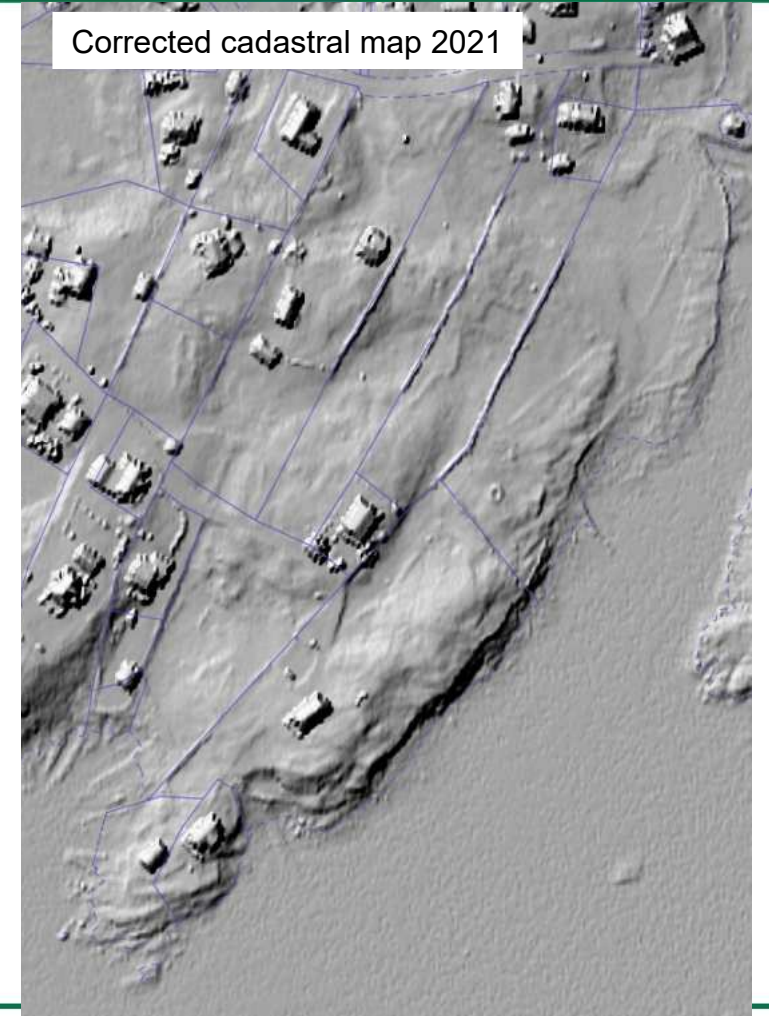
Original cadastral map 2020



Georeference land consolidation map



Corrected cadastral map 2021



ORGANISED BY



PLATINUM SPONSORS





FIG Working Week 2024

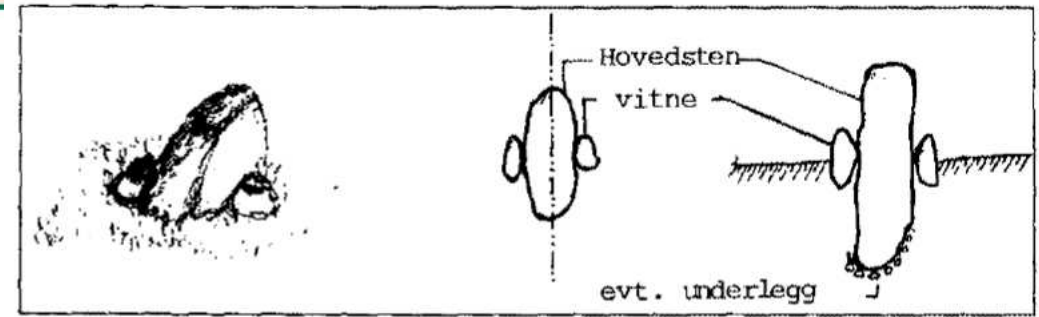
19-24 May

Accra, Ghana

Your World, Our World:
Resilient Environment
and Sustainable
Resource Management
for All

Boundary demarcation

- The earliest laws in Norway had provisions on how boundaries should be marked
- The Norwegian Code of the Realm of 1274 has these provisions:
Boundary stones must be set down and buried where agreed on and attached 3 stones and they are called "lyrites".
- Boundary stone and chiseled cross in rock are dominant man-made boundary marks until 1980
- In 1980 a standardized boundary mark was introduced



Boundary stone with two lyrites, scetch from Moen, S. (1983) Grensemerker



Standardized boundary mark introduced in 1980



FIG Working Week 2024

19-24 May

Accra, Ghana

Your World, Our World:
Resilient Environment
and Sustainable
Resource Management
for All

Boundary marks - examples



Boundary stone with two lyrites

Chiseled cross in rock renewed with standard aluminium boundary marker





FIG Working Week 2024

19-24 May

Accra, Ghana

Your World, Our World:
Resilient Environment
and Sustainable
Resource Management
for All

Boundary marks - examples





FIG Working Week 2024

19-24 May

Accra, Ghana

Your World, Our World:
Resilient Environment
and Sustainable
Resource Management
for All





FIG Working Week 2024

19-24 May

Accra, Ghana

Your World, Our World:
Resilient Environment
and Sustainable
Resource Management
for All

Final comments

- During our field courses at Røst starting in 2020, students and teachers have updated and corrected approx. 15 – 20 % of the cadastral map in Røst mainland, by using different methods see: [presentation Orlando 2023](#)
- Field surveys and research in april 2024: measure the time spent, for calculating the costs for correcting a defined area in the cadastral map
- Knowledge about the cadastral map, sources of information and boundary marks are essential in this work





FIG Working Week 2024

19-24 May

Accra, Ghana

Your World, Our World:
Resilient Environment
and Sustainable
Resource Management
for All

More to read

- Paasch, J. M., Paulsson, J., Skovsgaard, T., Mjøs, L. B., Halme, P., & Dyrkolbotn, S. (2023). Location and marking of cadastral boundaries in Nordic countries. *Nordic Journal of Surveying and Real Estate Research*, 7. <https://doi.org/10.30672/njsr.115338>

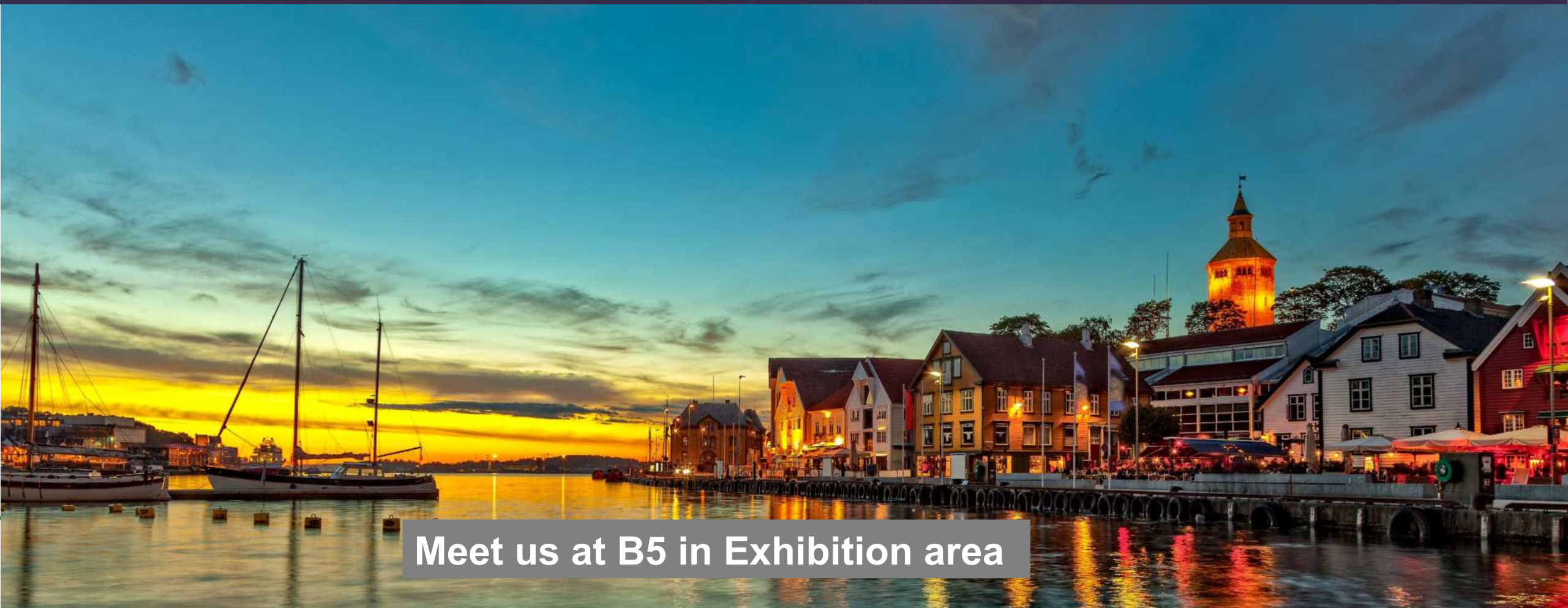




FIG Working Week 2027

Stavanger Norway 23-27 May

The Power of Where for the new Generations



Meet us at B5 in Exhibition area



FIG Working Week 2024

19-24 May

Accra, Ghana

Your World, Our World:
Resilient Environment
and Sustainable
Resource Management
for All

SUSTAINABLE DEVELOPMENT GOALS

International Federation of Surveyors supports the Sustainable Development Goals

Commission 7

Cadastre and Land Management

Serving Society for the Benefit of People and Planet

