



FIG Working Week 2024

19-24 May

Accra, Ghana

Your World, Our World:
Resilient Environment
and Sustainable
Resource Management
for All

The application of traditional traverse control using a Terrestrial LASER scanner, a case study of the Gold Hill Scheduled Monument, Shaftesbury, Dorset UK

Derek SPALTON, Giacomo Mauro ANDERSON and James STATHAM, United Kingdom

ORGANISED BY



PLATINUM SPONSORS



GEOSA
General Authority for Surveying
and Geospatial Information





FIG Working Week 2024

19-24 May

Accra, Ghana

Your World, Our World:
Resilient Environment
and Sustainable
Resource Management
for All

Introduction

This research develops work done over the last 2 years looking at optimising the performance of scanning in the field.

In the last study the use of pivot fixed prisms was considered to reduce site time and allow repeatable reference points, this had several benefits saving time, manual handling and generating fixed references, on the scheduled monument at Gold Hill, Shafesbury (see opposite).

At the time investigations had begun into using the scanning points for traverse control

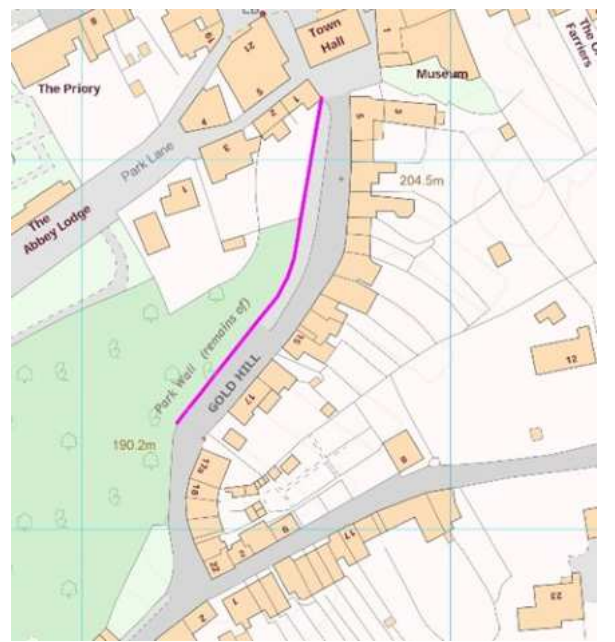




FIG Working Week 2024

19-24 May

Accra, Ghana

Your World, Our World:
Resilient Environment
and Sustainable
Resource Management
for All

Past work

- The focus of the research has been in the main to introduce control and look to maximise field time and reduce post data correction work. The work manifested itself into two distinct areas of application:
 1. Field operation of the instrumentation
 2. Survey control utilising a variety of control targets systems (See Opposite)



ORGANISED BY



PLATINUM SPONSORS





FIG Working Week 2024

19-24 May

Accra, Ghana

Your World, Our World:
Resilient Environment
and Sustainable
Resource Management
for All

Data Collection for the Traverse Control

- The data was collected on 3 separate visits to the site, in each visit a further aspect was explored to advance the student learning experience. The site visits took place on:
 - 4th May 2022
 - 26th January 2023
 - 10th September 2023
- The visits have been arranged to undertake assessment during different seasons and weather conditions, noting that the scanner is not used below freezing or in periods of heavy precipitation.





FIG Working Week 2024

19-24 May

Accra, Ghana

Your World, Our World:
Resilient Environment
and Sustainable
Resource Management
for All

Equipment

- The LiDAR scanner used was a Topcon GLS-2000
- Scanner can operate at 135,000 points a second with up to 350m
- Tie points established using elevating targets with circular flat reflective target faces
- Traverse measurements taken with a circular retro-reflective prism
- Total station used to perform check measurements on-site, providing validation of the results





FIG Working Week 2024

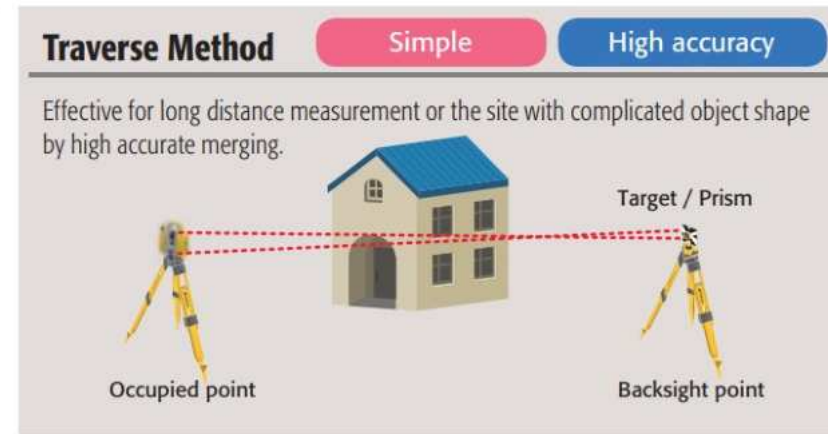
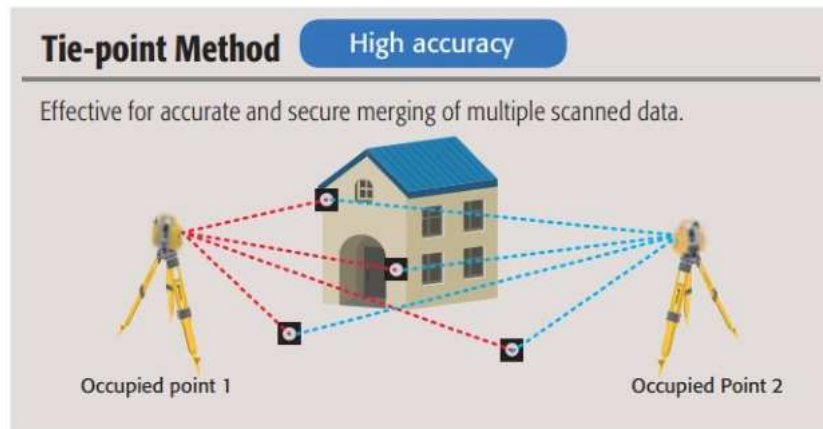
19-24 May

Accra, Ghana

Your World, Our World:
Resilient Environment
and Sustainable
Resource Management
for All

On-site Data Collection Processes

- Walk around of site and position of setups determined
- Targets and tripod setups installed at identified locations
- Scanner installed on top of tripods and point cloud data collected
- Target data measured
- Prism measurements recorded and checked against coordinates provided by the total station
- Scanner position moved and process repeated until all data was collected



(Topcon, 2015)



FIG Working Week 2024

19-24 May

Accra, Ghana

Your World, Our World:
Resilient Environment
and Sustainable
Resource Management
for All

Data Editing and Results

- Data extracted and edited using Magnet Collage
- Targets were registered using the software
- Traverse measurements were imported and registered separately
- Registration processes for both traverse and prisms produced accuracy reports which provide the raw results
- Results imported into graphs to provide a better visual representation of trends

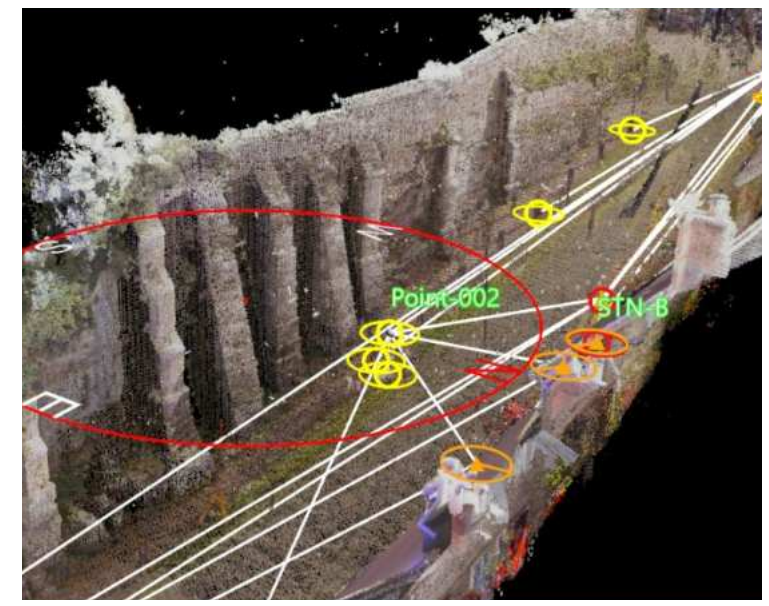
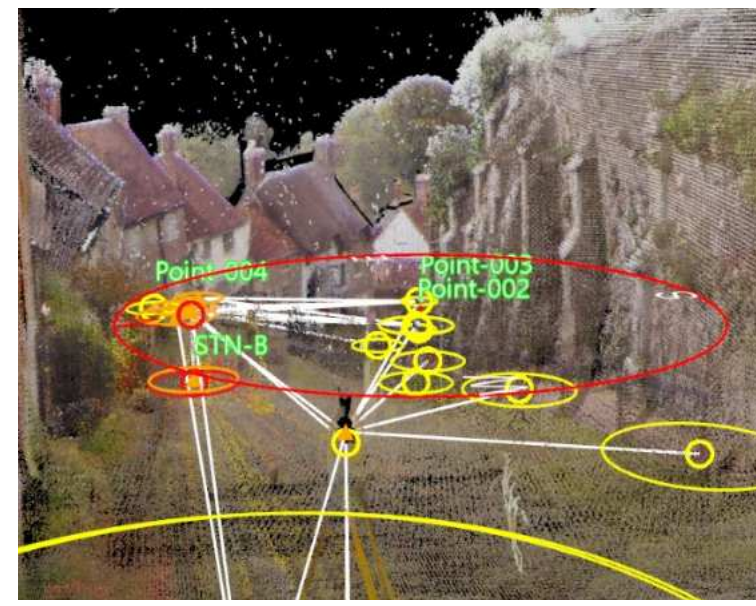




FIG Working Week 2024

19-24 May

Accra, Ghana

Your World, Our World:
Resilient Environment
and Sustainable
Resource Management
for All

Data Analysis

- Majority of target-based errors were recorded in X and Y
- This could be due to limited horizontal displacement of targets on-site
- Prism-based method was significantly more accurate than target-based in X and Y but less accurate in Z
- Vertical errors could be due to manual measurements of station heights
- Target-based method takes longer and requires more equipment than traverse method
- Target-based provides more redundant data

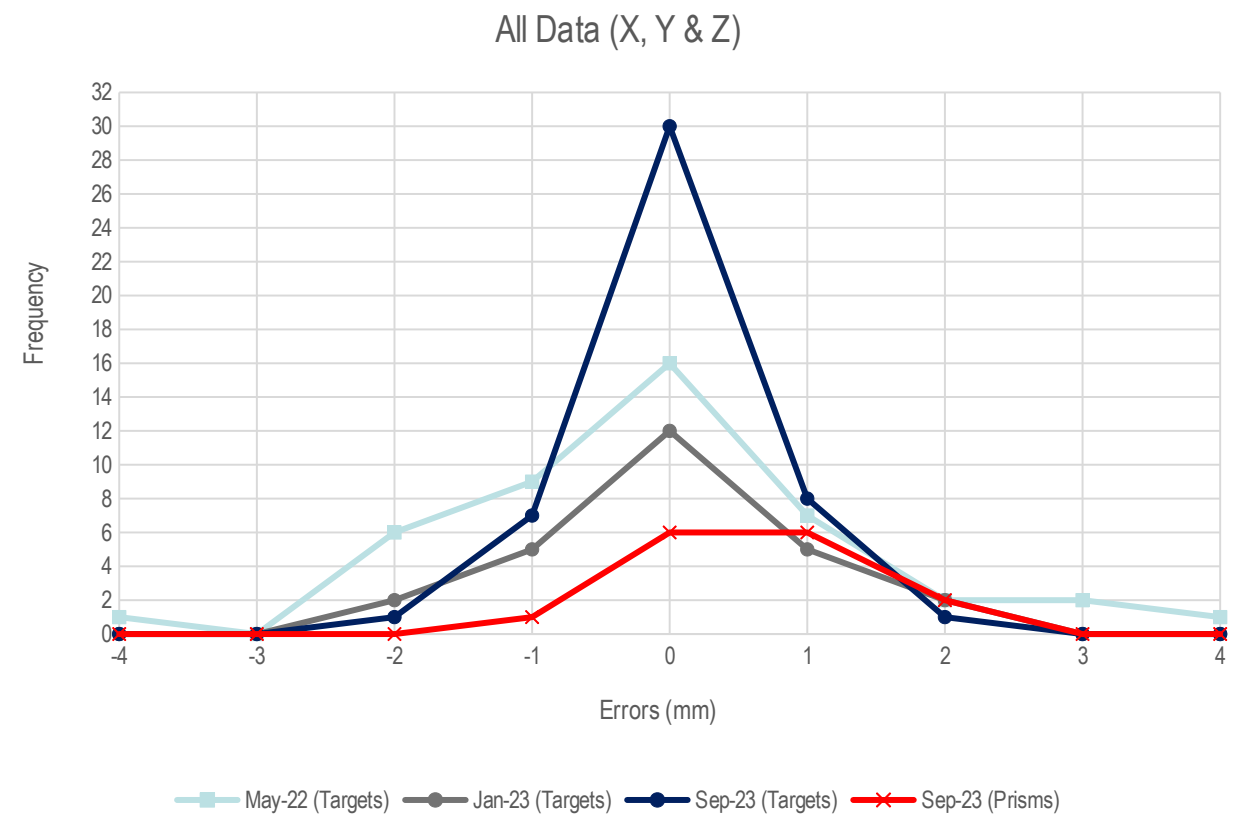




FIG Working Week 2024

19-24 May

Accra, Ghana

Your World, Our World:
Resilient Environment
and Sustainable
Resource Management
for All

Conclusion & Further Research

- With the limited data clear advantages can be seen in adopting a traverse approach with the LASER Scanners.
- The validation using a Monitoring Station confirms that working tolerances are easily achieved
- There are significant time savings both in the field and the post processing
- The need to position numerous targets and undertake manual handling is significantly lowered

- Further work should consider “geotagging” the scan positions and further stations should be included to provide for bracing and additional redundancy

ORGANISED BY



PLATINUM SPONSORS





FIG Working Week 2024

19-24 May

Accra, Ghana

Your World, Our World:
Resilient Environment
and Sustainable
Resource Management
for All

References

- Becerik-Gerber, B. et al. (2011) Assessment of target types and layouts in 3D laser scanning for registration accuracy. *Automation in Construction*, Vol. 20, Issue 5, Pages 649-658 (Accessed: 19 January 2024)
- Dong, Z. et al. (2020) 'Registration of large-scale terrestrial laser scanner point clouds: A review and benchmark', *ISPRS Journal of Photogrammetry and Remote Sensing*, Volume 163, pages 327-342. (Accessed: 19 January 2024)
- Fan, L. et al. (2015) 'Error in target-based georeferencing and registration in Terrestrial Laser Scanning', *Computers ; Geosciences*, 83, pp.54–64. doi:10.1016/j.cageo.2015.06.02 (Accessed: 19 January 2024)
- Historic England, Abbey Precinct Wall on Gold Hill, Shaftesbury - 1004559:(no date), Shaftesbury - 1004559 | Historic England. Available at: <https://historicengland.org.uk/listing/the-list/list-entry/1004559> (Accessed: 19 January 2024)
- Thorn Lighting, Tunnel lighting. Available at :<https://www.thornlighting.com/download/tunnelint.pdf> (Accessed: 25 January 2024)
- Topcon (2014), Instruction Manual GLS-2000 Series. Available at: https://sealandsurvey.co.uk/content/GLS-2000_Manual_A_Eng.pdf (Accessed: 25 January 2024)
- Topcon (2015), Brochure - GLS-2000 Laser Scanners. Available at: https://www.surveyingsystems.com/images/pdf/GLS-2000_E.pdf (Accessed: 16 January 2024)
- Young. GO, Smith. M J, & Murphy. R, (2012) Contemporary surveying education changing with the times, *Survey Review*, 44:326, 223-229, DOI: 10.1179/1752270611Y.0000000026 (Accessed: 19 January 2024)

ORGANISED BY



PLATINUM SPONSORS





FIG Working Week 2024

19-24 May

Accra, Ghana

Your World, Our World:
Resilient Environment
and Sustainable
Resource Management
for All

Any Questions?





FIG Working Week 2024

19-24 May

Accra, Ghana

Your World, Our World:
Resilient Environment
and Sustainable
Resource Management
for All

SUSTAINABLE DEVELOPMENT GOALS

International Federation of Surveyors supports the Sustainable Development Goals

Commission 6

Engineering Surveys

Serving Society for the Benefit of People and Planet

