



XXVII FIG CONGRESS

11-15 SEPTEMBER 2022
Warsaw, Poland

Volunteering
for the future –
Geospatial excellence
for a better living

Simplified Methods for Correcting the Norwegian Cadastral Map

Arve Leiknes

Leiv Bjarte Mjøs

Helge Nysæter

Vemund Hansen

Western Norway University of Applied Sciences

ORGANISED BY



PLATINUM SPONSORS



Simplified Methods for Correcting the Norwegian Cadastral Map

Case study Røst and Værøy 2020-22

- Røst – approx 600 inhabitants
- Værøy – approx 800 inhabitants



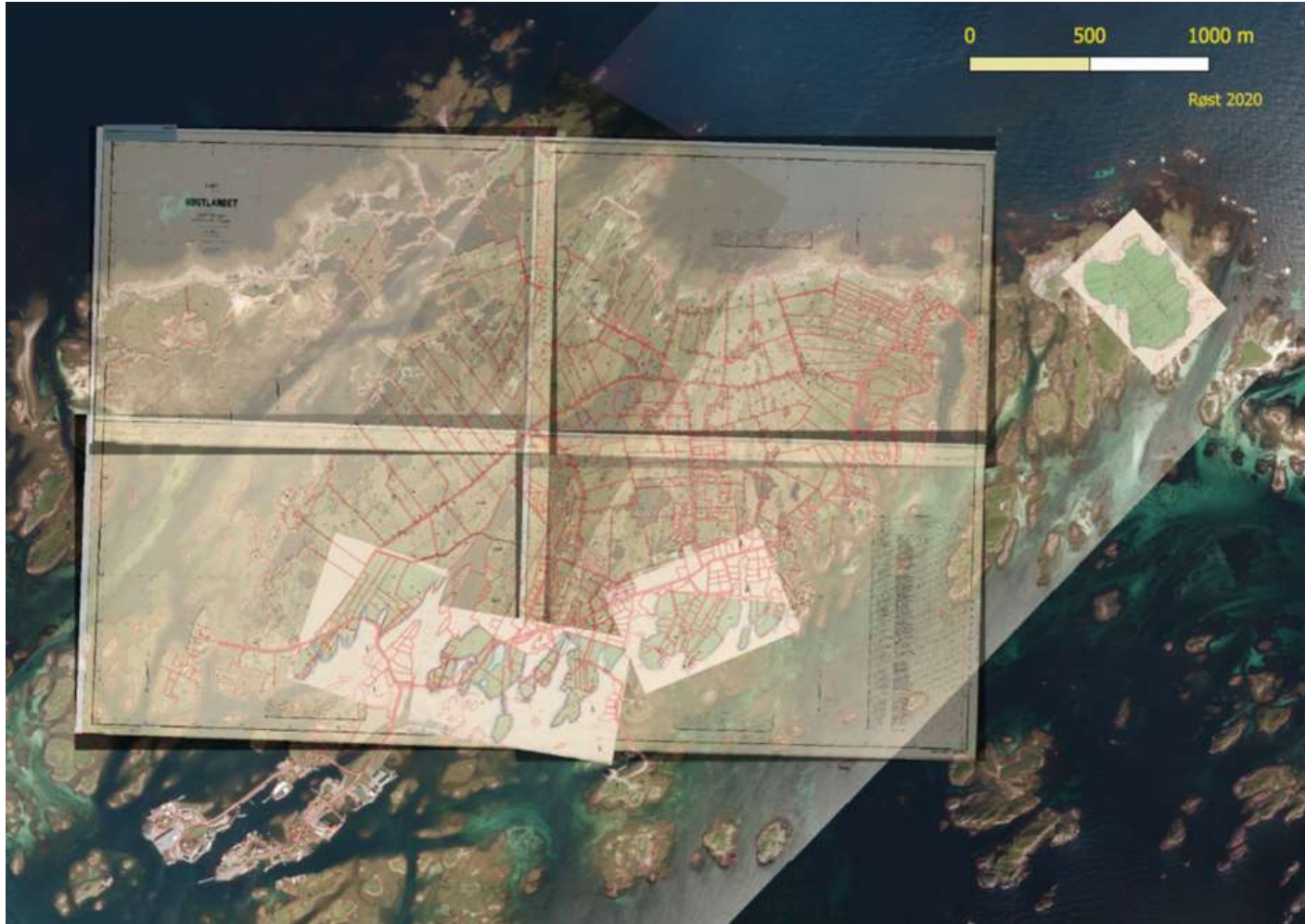
Background

Initiative from Røst, Værøy, Bodø
Municipalities and the Mapping Authority to find
Methods for simplified Methods for Correcting
the Cadastral Map.

Organised together with Western Norway
University of Applied Sciences

Financial support from the County





Land Consolidation Maps

Røst





Students preparing
for Cadastral
surveys





An example of what can be the situation



- Public meeting.
- Landowners identify their boundaries
- Measurement done by students.

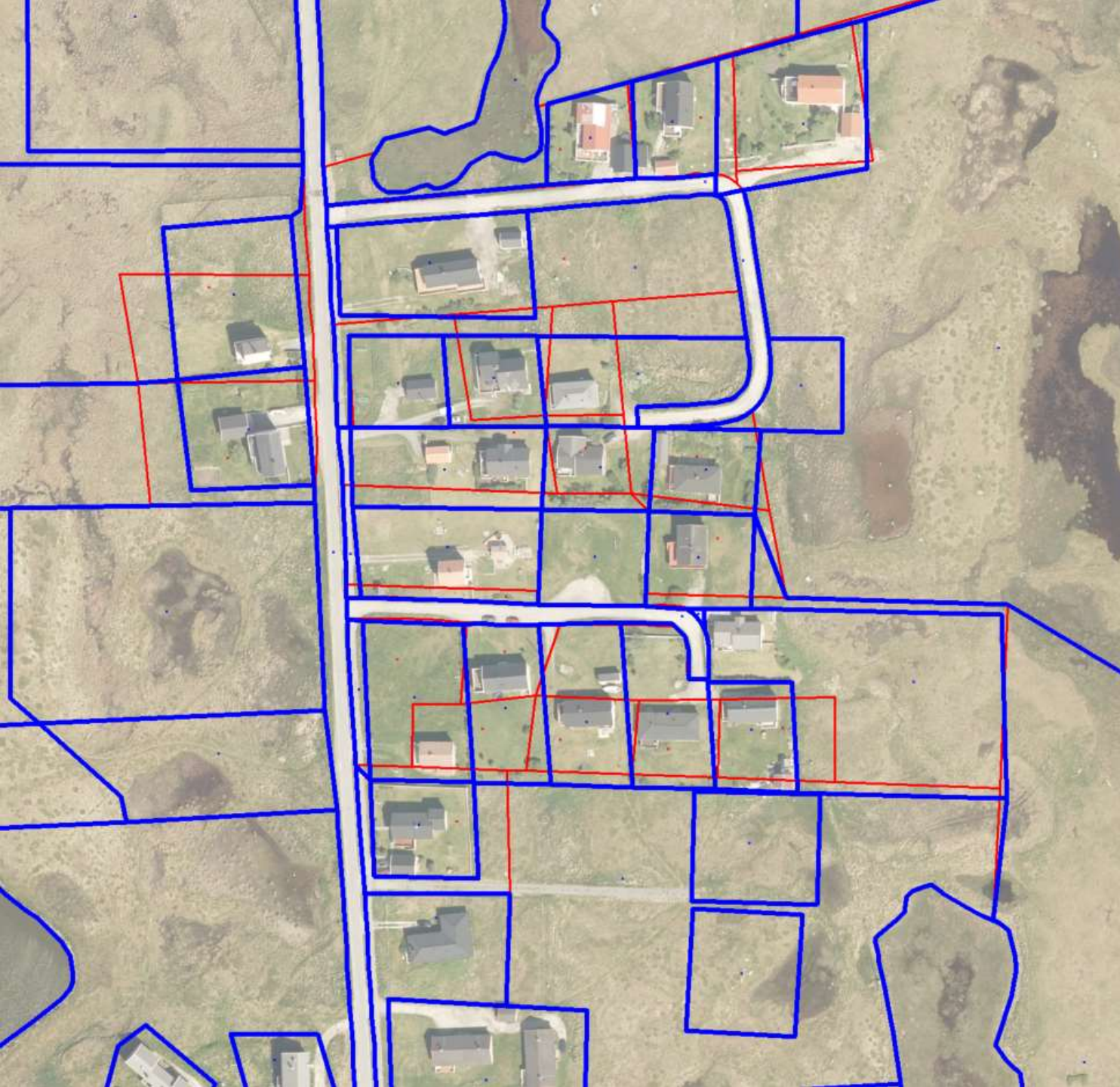


Measuring boundaries



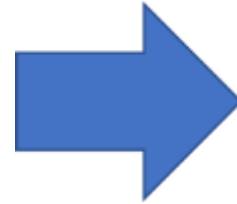
Challenges

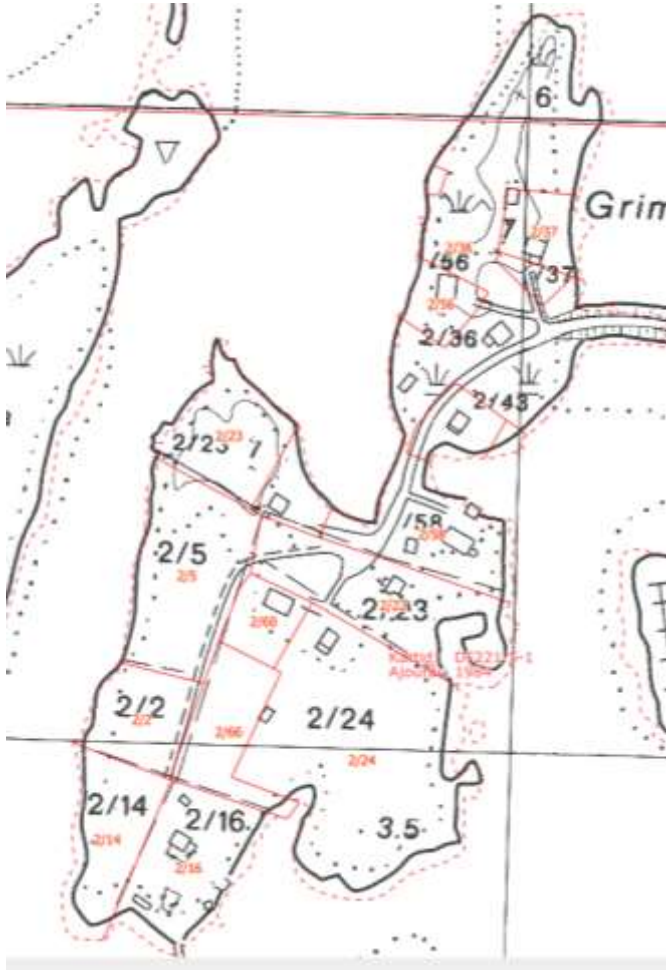




Red is incorrect boundaries

Blue is corrected boundaries

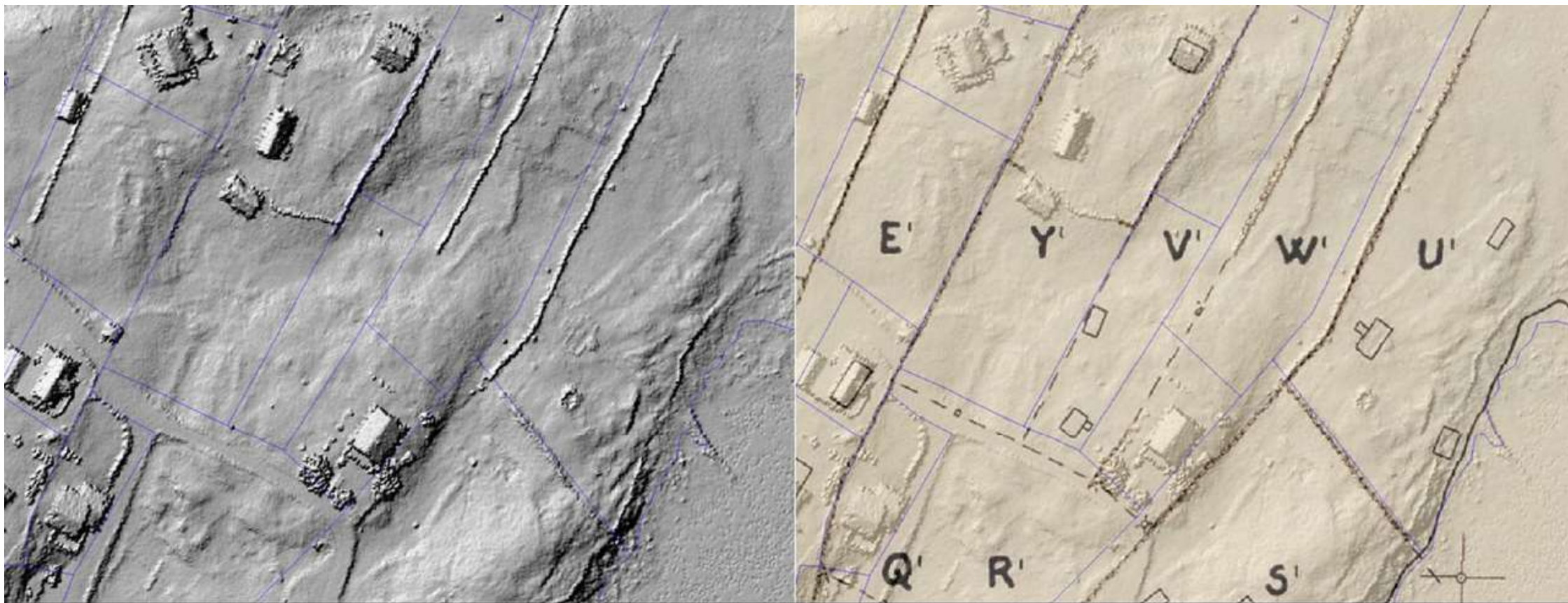




Old Economic map is
almost correct?

*Why is Cadastral Map
incorrect?*

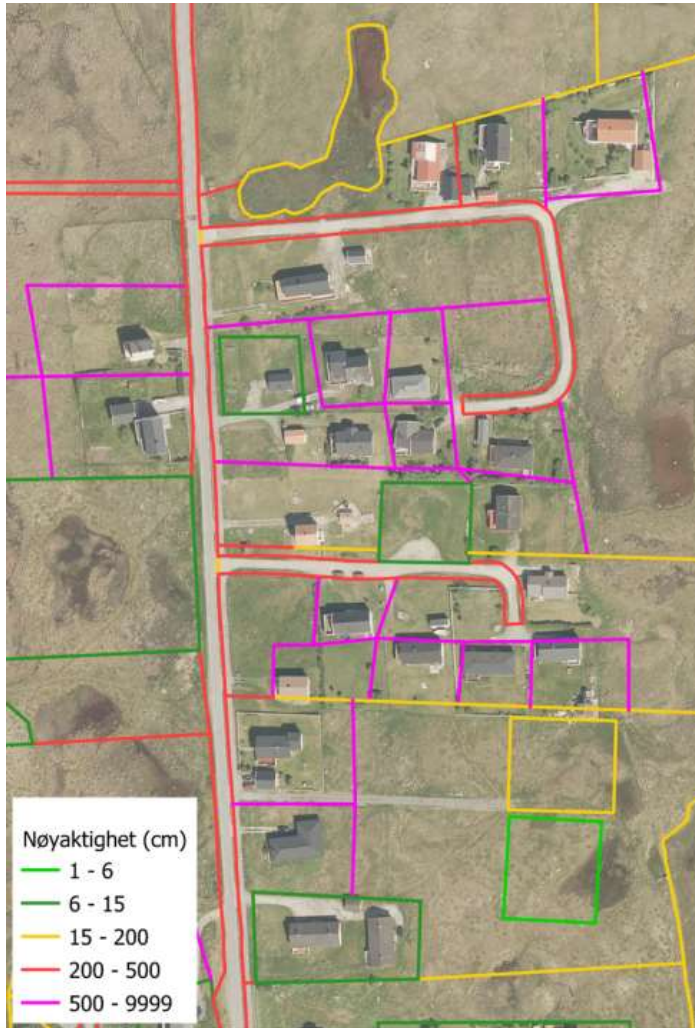
- Terrain model, Cadastral Map and Land Consolidation Map



Findings and conclusion

- Happy Students, Staff, Landowners, Municipalities, Mapping Authority 😊





Findings and conclusion

- Landowners interested to participate to correct the cadastral map
- Methods developed are efficient (maybe not enough)
- Around 70 parcels are corrected
- Timeuse to register in the Cadastre - 1 hour for each parcel
- But it will take long time to correct the Norwegian Cadastral map



Recommendations

- Purpose with the Cadastral Map?
 - Index Map for use in planning, building, etc?
 - or
 - Detailed information about boundaries for handling relations between neighbours?

- Index Map
- Solutions to Correct the Map efficient



**Thank you for
attention**



Foto: Helge Nysæter, HV



