

# Impacts of Mega-Earthquake 2015: Nepal's Efforts on Rebuilding & Recovery



Dr. Bishnu B. Bhandari

Member

National Reconstruction Authority

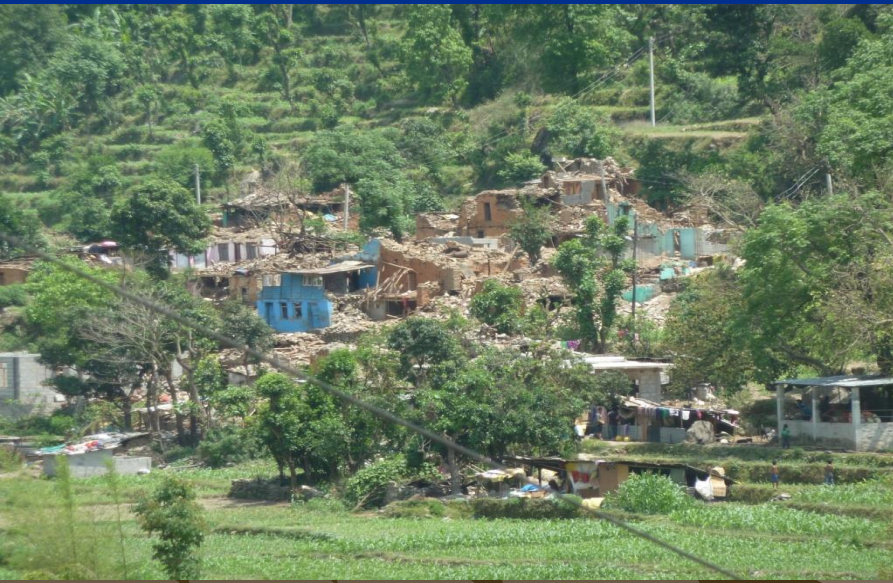
FIG Work Week, 2-6 May 2006, Christchurch,  
New Zealand

# Mega Earthquake of 2015





## Destructions in Rural Area







## Destructions in Urban Area







(1) Dharahar Tower



(2) Cracks in City Road

# Destructions of Infrastructures



(3) Durbar High School



4. School in Gorkha

# Vital Statistics on Damage & Loss

## Human Loss

Casualties	= 8,790
Potential Year of Life Lost ( <b>PYLL</b> )	= 3,100 (ICIMOD)
Injured	= 22,300
Missing	= 300
Displaced	= 100,000 (ICIMOD)
Population	= 8 million (affected)

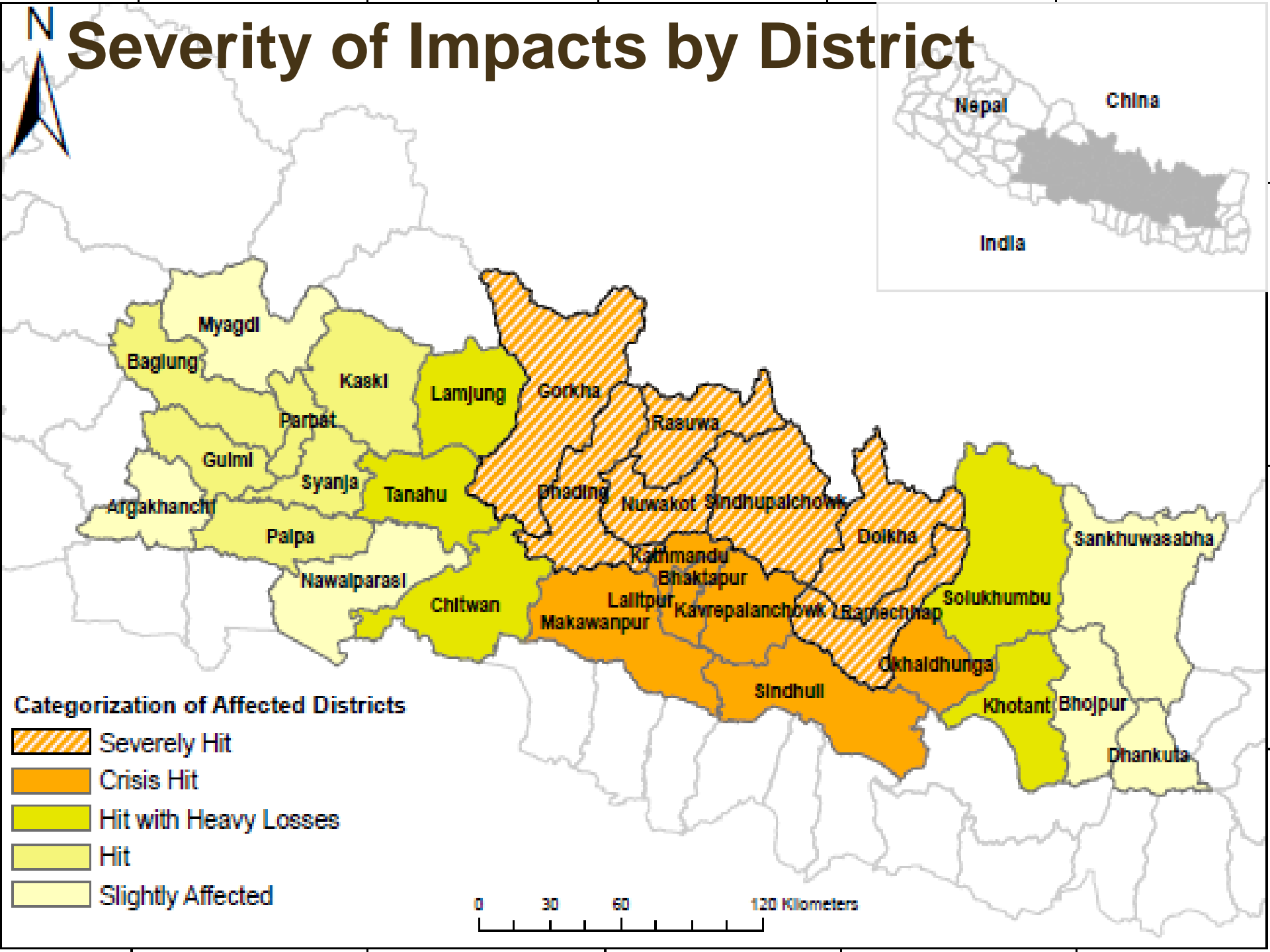
## Structures

Structures	= 769,693
Classrooms	= 31,000

## Livelihood

Home-based work place	= 74,500
Small & Cottage Industries	= 57,308
Livestock	= 59,000
Birds	= Over 5 lakh
Small Irrigation	= 1800
Damages of countless factories/infra	

# Severity of Impacts by District



Categorization of Affected Districts

- Severely Hit
- Crisis Hit
- Hit with Heavy Losses
- Hit
- Slightly Affected

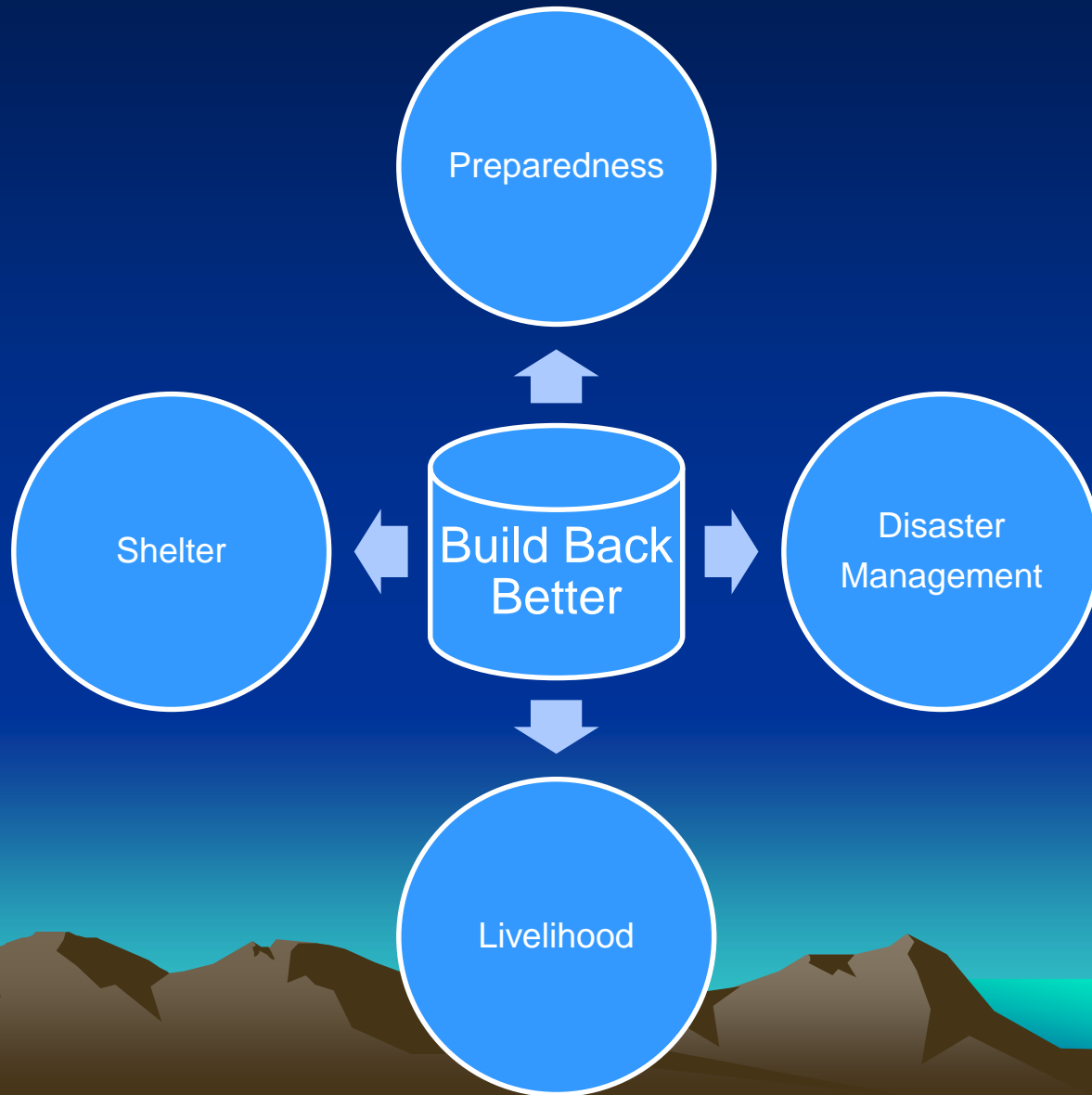
0 30 60 120 Kilometers

# The Build Back Better Approach

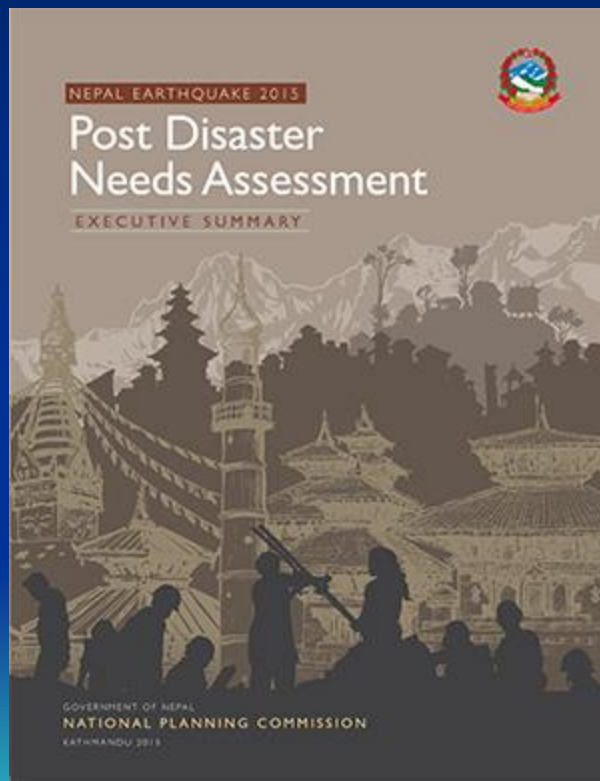




# The Build Back Better Approach




# Initial Works



- Emergency rescue, response & search
- International Conference on Nepal's Reconstruction. June 25, 2015
- PDNA (Post Disaster Needs Assessment) contains loss and damages and total cost sector-wise prepared. 6.69 billion US \$ needed for reconstruction.
- National Planning Commission designated as responsible organization.
- Formation of National Construction Authority (NRA)



# What NRA has done in 4 months?

1. Affected household surveyed in 11 districts: 3,19,912 beneficiaries identified from about 400 villages. 1600 engineers involved
  2. Reconstruction Policy already in place. Others s includes
    - Grant distribution procedures
    - Environmental Impact Assessment
    - Land Acquisition & Land Distribution Procedure
    - Procurement Procedure
    - NGO mobilization
- 

# What NRA has done in 4 months?

3. Grants distributed to 6000 household and it is simultaneously going on in 11 districts.
4. Set up of PIUs in 3 ministries, budget allocated to those ministries
5. Recruitment of 2,700 engineers for each village. 1100 engineers already sent to villages.





# What NRA has done in 4 months?

6. Course content prepared for training social mobilizers, mason workers. Now the course is being pre-tested.
7. Post Disaster Recovery Framework (PDRF) under preparation.
  - Based on PDNA
  - 5 year framework of programs of sectoral ministries and areas
  - Answers 5W's2H'
  - Short, medium & long-term plans

# Funding Allocation by Source

(Total Estimate = US \$ 8.2 Billion)

Source	Amount
Domestic Revenue	1.35
External Aid (Pledged US\$ = 4.10)	1.20
Sub-total	2.55
<b>Total =8.2 billion</b>	
<b>Source: PDRF, 2016</b>	
Note:	

(1) In case of external aid, only 29% of the pledged money available . 71% is yet to be committed.


(2) Of the total estimate of 8.2 billion, only 31% is available. About 69 % is yet to be committed



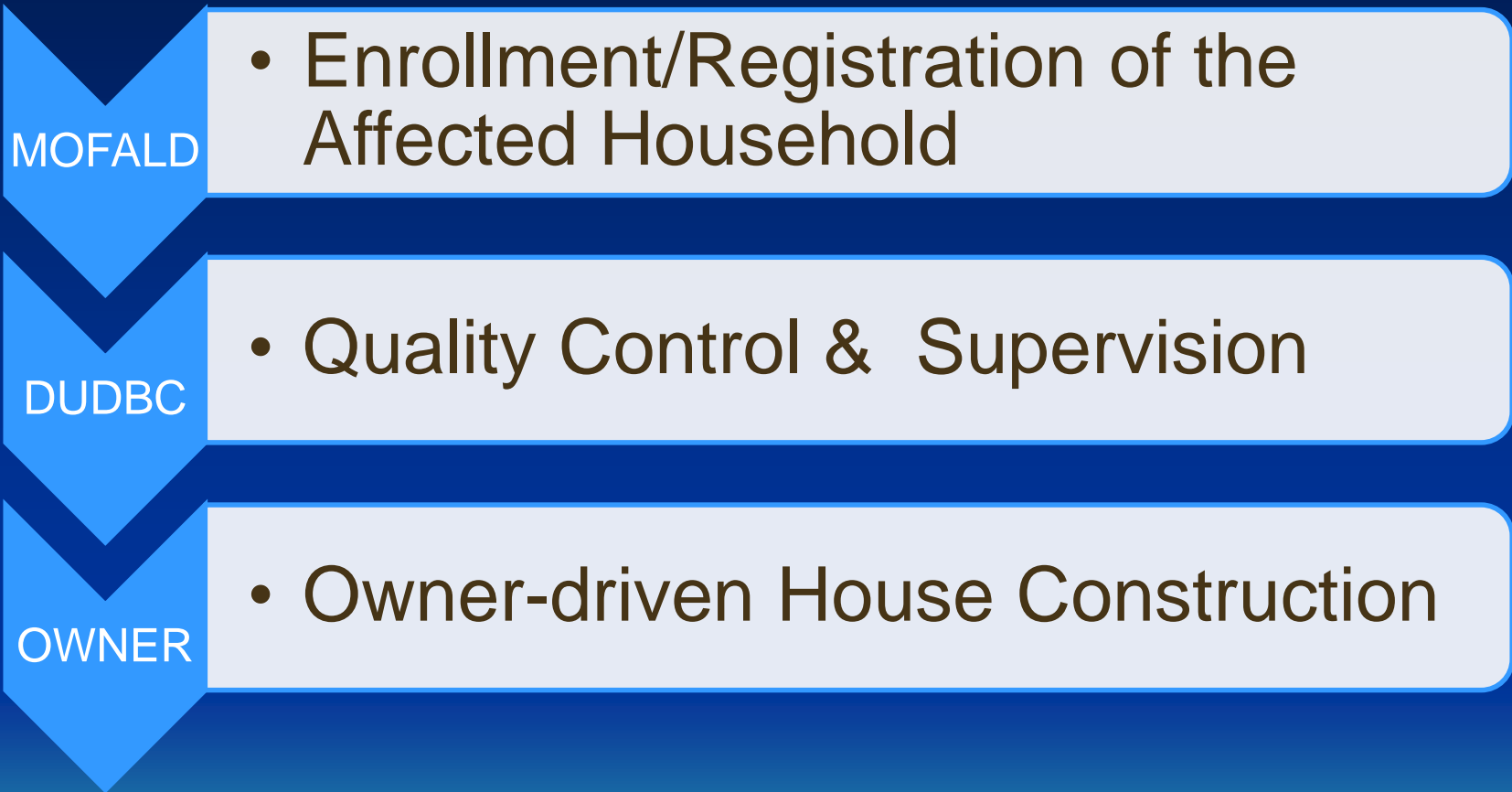
# Earthquake Resistant Shelter



# Shelter Construction

- Houses should be built by owners themselves
  - 17 types of drawings + Checklist for RCC building and Indigenous houses.
  - Structures should be resistant to earthquake
  - Grant is given in 3 installments
  - Government provides technical support, subsidized construction materials & others
  - Integrated relocation planning
- 

# Construction Arrangement



National Reconstruction Authority (NRA) is responsible for oversight, monitoring, catalysis & coordination

# Forms of Livelihood







(1) Orphans



(2) Post Traumatic Stress



(3) People with Disability



(4) Person who lost spouse



(5) The Elderly People



(6) Injured



(7) Damaged Animal Shelter





(7) Souvenir



(8) Wood Carving



(9) Paper Making



(10) Pottery

# Livelihood Options

**Employment**

**Dignified  
Livelihood**

**Engagement**

**Social Protection**





# Social Protection



(1) Single Woman



(2) Orphans



(3) Elderly Person



(4) Injured



(5) The disadvantaged



(6) Dalit

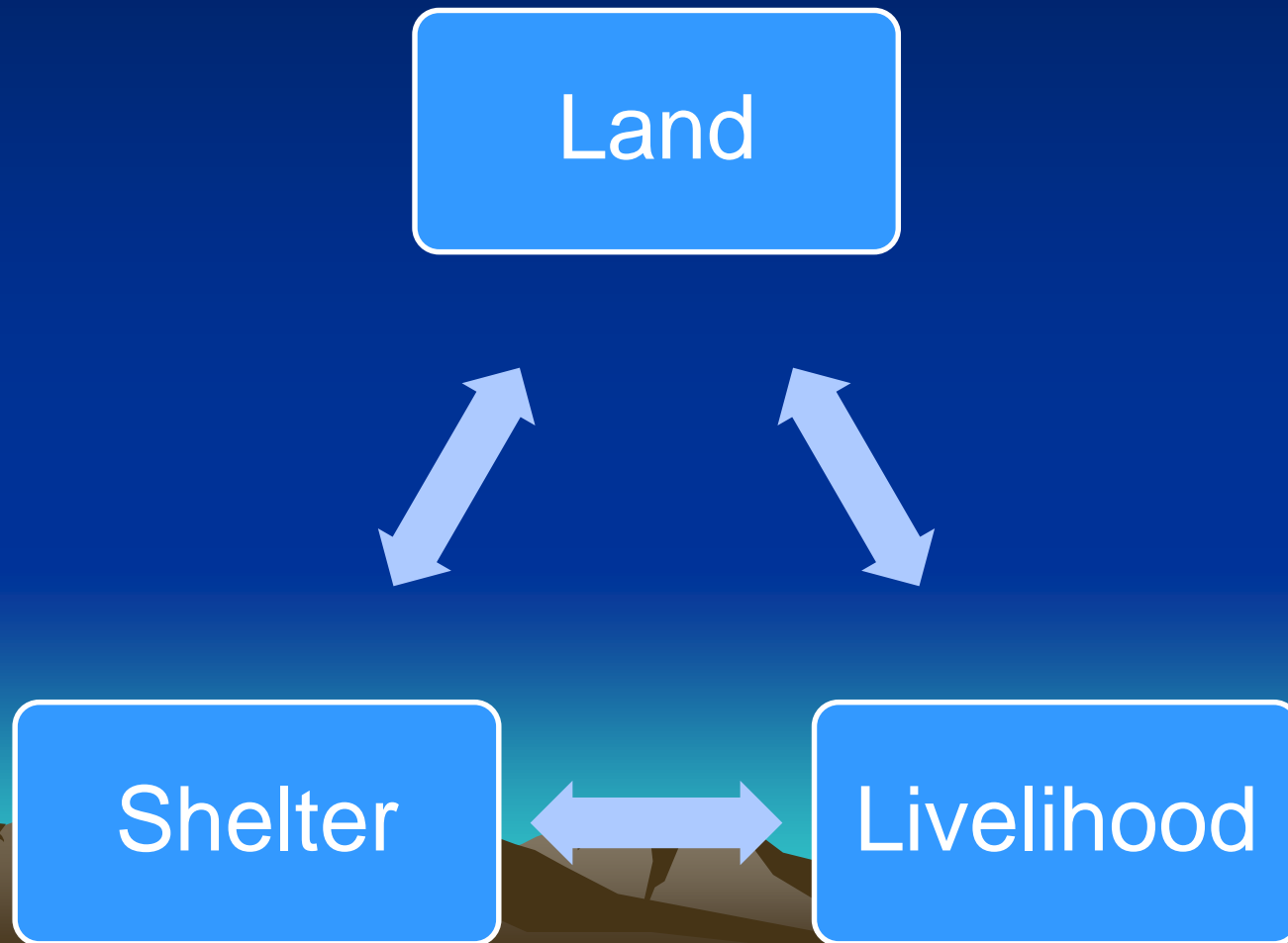


(7) Janjati



# Major Areas of

## 1. The intricacy of land-shelter-livelihood nexus

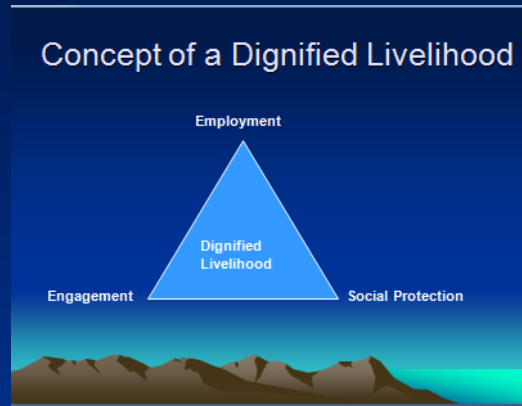


# Some Problems

1. Blending effectively Science + Culture + Geography.
2. Banking system , not easy & not accessible
3. The position of village secretary vacant
4. Enrollment procedure itself cumbersome



# Your suggestions are welcome.



# Thank you