

# New Cadastral Surveying Process for the Geospatial Information Society in Korea

D.K. Tcha  
General Manager

LX Korea Cadastral Survey Corps.

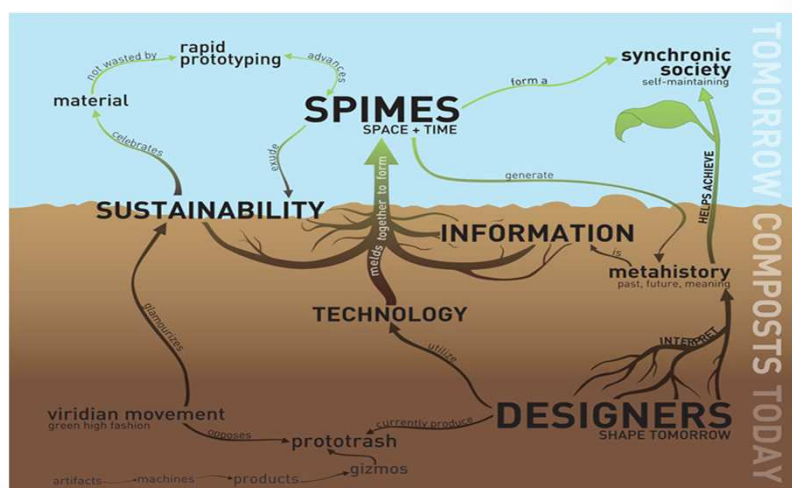


16 frames

[ 1 ]

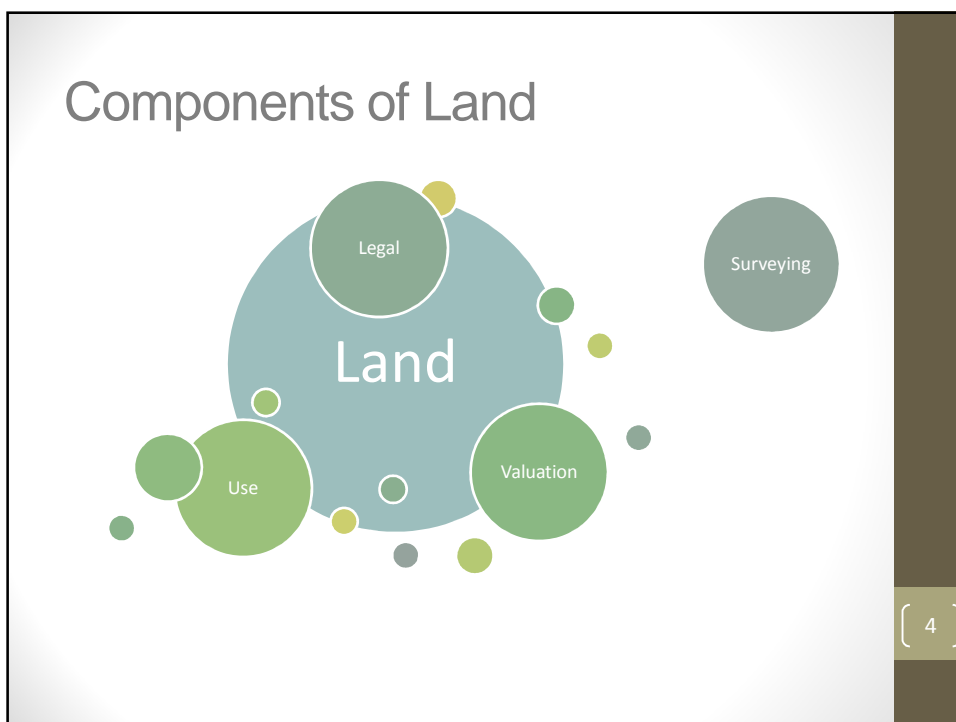
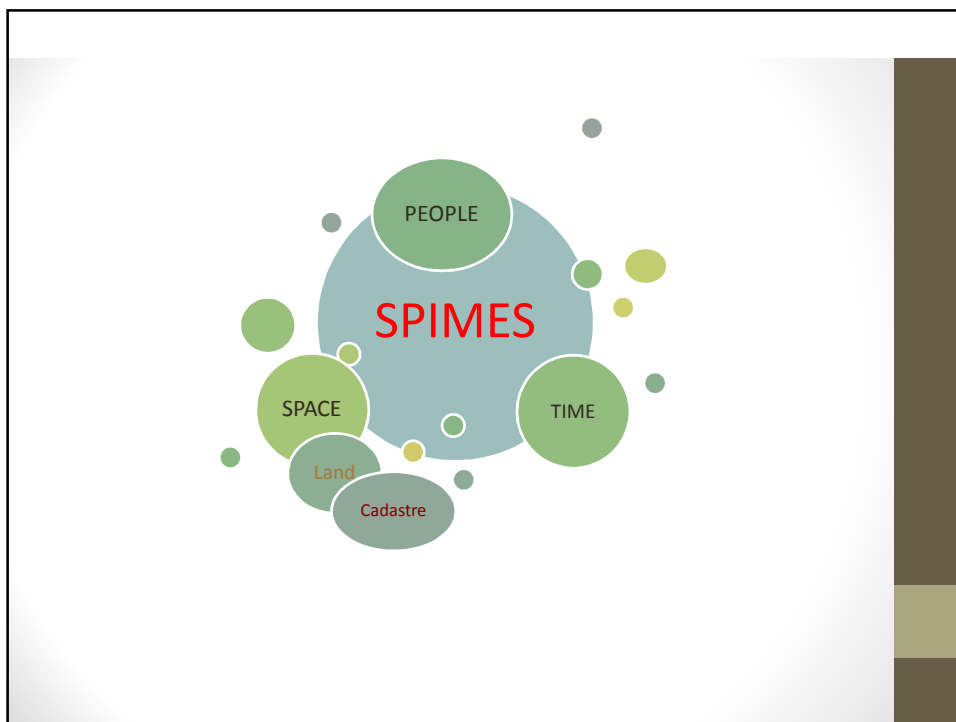
## SPIMES

The Future Society = Space + Time



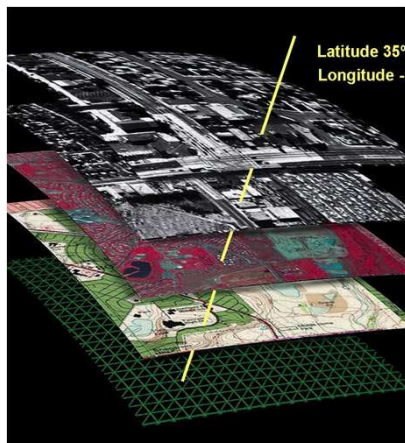
Bruce Sterling, 2005 <http://www.alicechen.ca/infomodels/>

[ 2 ]



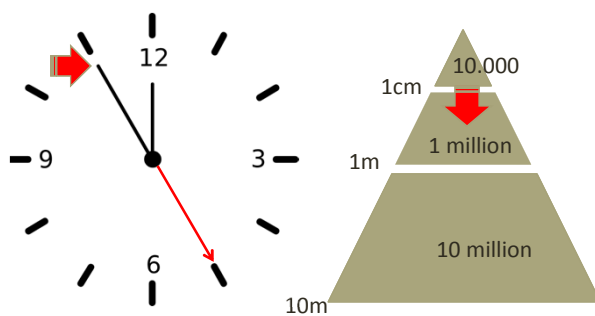
# Geo-burg ???

What wants our customer?



[ 5 ]

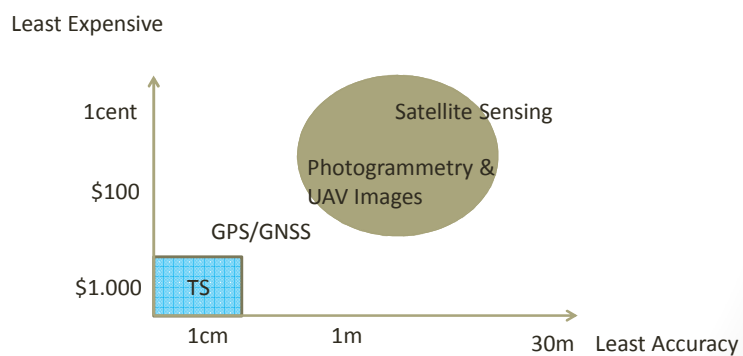
# Geo-Business Positioning



Accuracy and Number of Users in Korea

[ 6 ]

## New Business Sectors



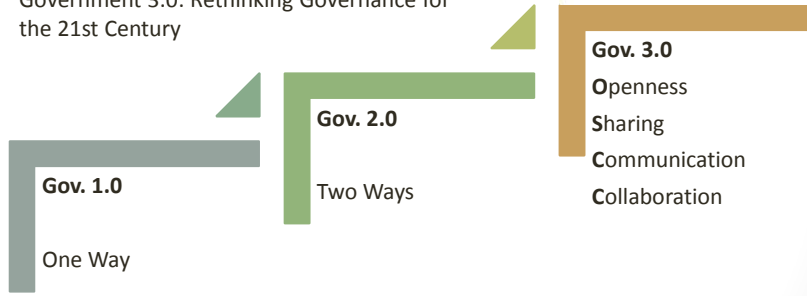
## Cadastral Process

The consequences for the cadastre in Korea

- responsibility for the cadastre
- cadastre in focus ( Gov. 3.0 )
- the present and future cadastral process
- what is cadastral infrastructure?

# Korean Gov. 3.0

Government 3.0: Rethinking Governance for the 21st Century

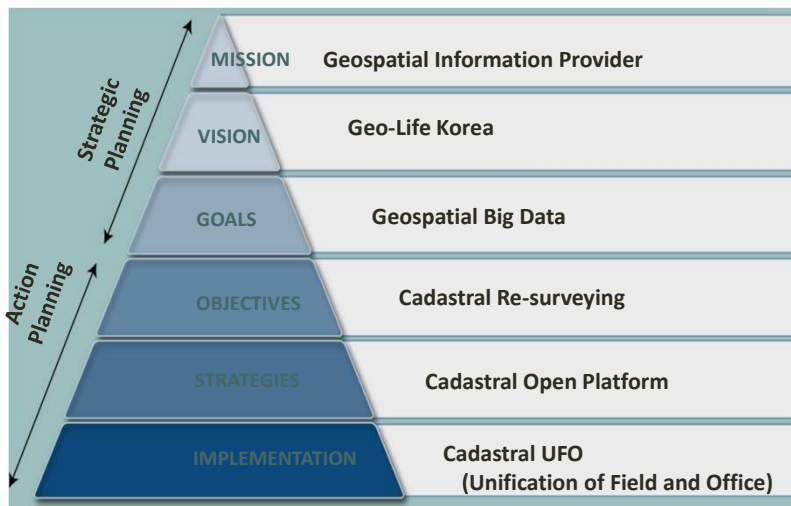


# Open Platform(V-world)

- Open data / API / VGI
- SNS + Local based + Mobile Network ( Solomon )
- SPIMES(Space + Time) and Human Society

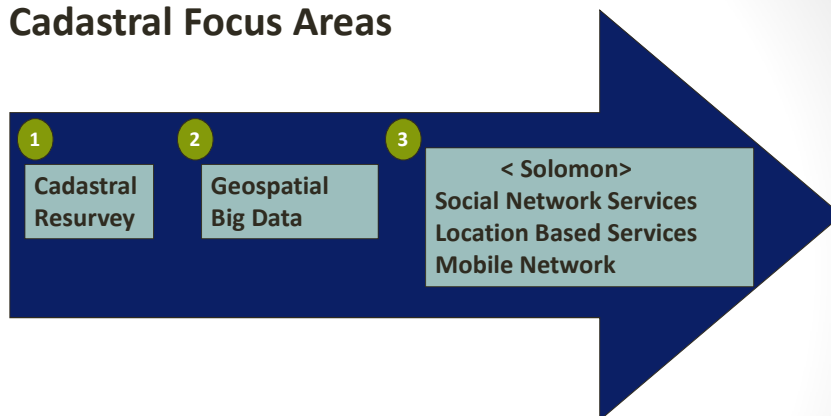


## New cadastral process for the Gov.3.0



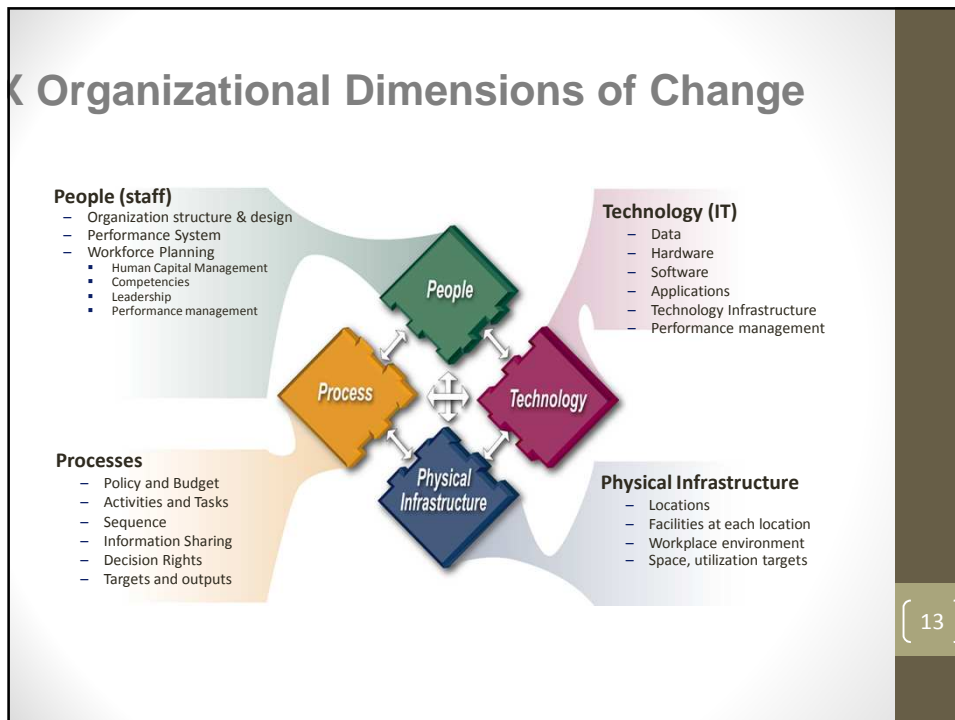
[ 11 ]

## Cadastral Focus Areas



key strategic elements en route to a geospatial governance model

[ 12 ]



Good Governance      Open Platform      Good Services  
 Open data

[ 14 ]

## Conclusion “The LX lead a Korean Geo-Life”



<http://designmind.frogdesign.com>

- ❑ Governmental changes and reduction forced LX to rethink its functions and relations to rest of the society.
- ❑ It requires a vision and a picture of the next 10 years development.

[ 15 ]

## For More Information

DekKie, Tcha  
LX Korea Cadastral Survey Corps.

[www.lx.re.kr](http://www.lx.re.kr)

[tcha@lx.or.kr](mailto:tcha@lx.or.kr)



[ 16 ]