

How the National Mapping Organization of Japan responded to the Great East Japan Earthquake?

Toru NAGAYAMA, Kazuo INABA, Tamotsu HAYASHI and Hiroyuki NAKAI, Japan

Key words: natural disaster, earthquake, tsunami, Japan, national mapping organization

SUMMARY

Geospatial Information Authority of Japan (GSI) is the national mapping organization in the Japanese Government. With 700 staff members in geospatial field, the organization conducted various kinds of activities in response to the Great East Japan Earthquake in 2011. This paper summarizes its activities as well as achievements and challenges recognized.

Since the day of the occurrence of the Earthquake, 11 March 2011, GSI has concentrated into disaster response activities. The major activity areas were: detection and analysis of ground surface movements; aerial photo survey; tsunami inundation mapping; and provision of base maps. Further, follow-up activities for reconstruction support of damage areas are still underway.

Major achievements of GSI's experience are; quick data gathering, development and provision; devising new arrangements for effective and efficient data delivery; and wider use of GSI's products in the society, particularly rescue and recover organizations.

Meanwhile the following challenges prompting further improvement are recognized: ensuring resiliency and redundancy of communication, energy and facilities; further rapid data development; data provision in appropriate methods satisfying diversified user needs.

As occurrence of natural disasters never ends, geospatial engineers always need to learn about their experiences mutually and collectively for better responses. This paper is hoped to be an input for further thinking of the readers interested.

How the National Mapping Organization of Japan responded to the Great East Japan Earthquake?

Toru NAGAYAMA, Kazuo INABA, Tamotsu HAYASHI and Hiroyuki NAKAI, Japan

1. INTRODUCTION

The Great East Japan Earthquake has brought enormous loss of lives and damages of properties to the people and lands of Japan. As soon as the main shock occurred on 11 March 2011, Geospatial Information Authority of Japan (GSI), the national mapping organization in the Japanese government, established emergency headquarters in order to gather develop and provide relevant geospatial information for responding organizations and the people. While initial emergency activities have been finished, follow-up activities are still continuing as of March 2012.

This paper first introduces GSI and shortly summarizes the disaster. Following, GSI's response to the disaster and achievements and challenges recognized are given ending with conclusion.

2. GEOSPATIAL INFORMATION AUTHORITY OF JAPAN (GSI)

2.1 Organization

GSI, being the competent public authority of the Survey Act, conducts national surveying and mapping activities, which provide a basis for the land management. Historically it dates back to 1869 when Cadastral Registration Map Section was established in the office of Geography Department, Ministry of Civil Service. Later in 1888 it was reorganized as Japanese Imperial Land Survey, and finally in 1945 it became the Geographical Survey Institute in former Home Ministry. In April 2010, the official English appellation was changed to "Geospatial Information Authority of Japan."

GSI currently implements measures and activities based on the following missions:

- Developing, updating and providing geospatial information as the infrastructure in a responsible manner;
- Facilitating an environment where a diversity of geospatial information is developed effectively and readily available and utilizable by anyone; and
- Promoting the use of geospatial information through a wide range of domestic and international collaborations.

Main measures and activities are:

- Observing and providing positional data (longitudes and latitudes) of the land and elevations from the mean sea level, with ground control point infrastructure including GNSS based control station network (GEONET);
- Providing and publishing base maps (1/25,000 topographic map series etc.), thematic maps (land use map, etc.), DEM as well as aerial photographs, by paper maps, digital

- formats and web-mapping services;
- Executing the Survey Act and the Basic Act on the Advancement of Utilizing Geospatial Information (i.e Japanese NSDI law), jointly with relevant government organizations;
 - Establishing public relations in support of stakeholders and people; and
 - Conducting research and development activities;

The headquarters are located in Tsukuba city, Ibaraki prefecture, 50 km northeast from Tokyo. GSI has ten regional survey departments to implement activities at regional level. The number of staff is 719 in 2011. The delegated budget (including both human and capital cost) in fiscal year 2011 is 10.7 billion yen (ca. 130 million US dollar.)

2.2 GSI's commitments to disaster measures

Since Japan is vulnerable to large-scale natural disasters such as earthquakes, tsunamis, volcanic eruptions, typhoons, etc., protecting citizens and properties from disasters has always been an important subject. To this end, the Disaster Measures Basic Law was established in 1961 as a national framework for measures against disasters. GSI has served as one of the designated administrative organs, designated by the Prime Minister under the Law since 2001.

GSI develops its Disaster Management Operation Plan, by stipulation of the Law. The Plan describes the principles of measures and activities in disaster operation cycle. It also defines GSI's two missions in disaster management operation: 1) providing information on natural phenomena including crustal movements, and 2) providing topographic and land condition information of the country. Under the Plan, GSI maintains Disaster Management Operation Manual which prescribes the organization and resource mobilization in disaster response phase. Departments within GSI further establish their operation manuals.

Establishing rules and procedures only doesn't assure good performance during disaster response. A number of drills has been regularly exercised in Japan at all levels to maintain quick responsiveness and resource mobilization. GSI also conducts such drills organized by central government and by itself at least several times a year.

Major GSI's disaster response experiences in recent decades were: Great Hanshin-Awaji Earthquake (1995), Mt. Usu volcanic eruption (2000) and Niigata-ken-Chuetsu earthquake (2004). Notably Mt. Shinmoe volcanic eruption and Typhoon No. 12 (Talas) were also experienced by GSI in 2011, in addition to that of Great East Japan Earthquake.

3. GREAT EAST JAPAN EARTHQUAKE, SUMMARY

3.1 The main shock

The 2011 off the Pacific coast of Tohoku Earthquake, the main shock, occurred 14:46(JST) 11 March 2011. The epicenter was located about 130 km ESE from Osika peninsula, Miyagi prefecture and 24 km in depth (JMA, 2012). The hypocentral area of the earthquake in the boundary between two plates extended 400km in N-S and 150 km in E-W directions. Moment

magnitude (Mw) of the earthquake, 9.0, was the largest in Japanese observance history and was the fourth largest one since 1900 (USGS, 2012). A terrible shake (more than 6+ in Japanese seismic intensity scale) was detected in Miyagi, Fukushima, Ibaraki and Tochigi prefectures during the main shock. The main shock also brought the huge tsunami wave, of which height was more than ten meters and run-up height was 40m at maximum, to the wide range of Pacific coast of Tohoku province (JMA, 2012) (TETJSG, 2012).

3.2 Major damages

The huge tsunami washed away the victims and properties in the coastal areas. The number of dead and missing as of March 2012 amounted to 19,125 (NPA, 2012). Most victims were in Iwate, Miyagi and Fukushima prefectures. More than 90% of casualties were by the tsunami. Buildings and infrastructure were almost damaged by the tsunami. Some areas have been permanently inundated since the tsunami, due to the land subsidence up to one meter caused by the earthquake (see 4.2).

Fluvial plain and reclaimed areas in Chiba and Ibaraki prefecture, close to Tokyo metropolis were struck by the land liquefaction due to the strong shakes of the main shock. Inclination of building, disconnection of water and gas pipes, inundation of rice paddies with the deposition of naturally pumped sands were major damages in these areas.

The earthquake and the tsunami also triggered a severe accident of Fukushima Daiichi Nuclear Power Plant. Because the ECCS, or emergency core cooling system of the Plant got damaged and didn't work, nuclear reactor was broken by the melted nuclear fuel, causing the emission of radioactive materials into the environment. Many residents around the Plant had to evacuate to avoid radioactivity contamination and have to endure a severe life since then.

3.3 Damages of GSI properties

Thanks to the completion of base isolation (earthquake free) system in December 2010, the main building of GSI headquarters were all safe, though severe shake was felt by staff members. Damages of other structures were not serious, however office furniture including map lockers was broken and documents were scattered on the floor after the earthquake. It was fortunate that there were no human damages within the organization.

Meanwhile geodetic observation facilities in the field were damaged. One GNSS based station was totally washed away and two stations were half broken by the tsunami. Soma tidal station in Fukushima prefecture was total devastated by the tsunami.

4. RESPONSE OF GSI TO THE GREAT EAST JAPAN EARTHQUAKE

4.1 Management

Following its Disaster Management Operation Manual, GSI entered into emergency status and set up emergency headquarters (EHQs) just after the main shock. EHQs served as the

decision making body in disaster operation. The first EHQs meeting was held 15:10, 11 March (JST), within thirty minutes after the main shock. Subsequent two EHQs meetings were held on that day. Chaired by the Director General of GSI, executives identified the damages of the facilities and status of staff and discussed initial actions to be taken. The EHQs meetings were held twice to four times a day during the first week, once a day in the rest days of March, Figure 1 shows the summary of GSI disaster response activities.

As a government organ, GSI also dispatched its liaisons on 24 hour per day basis for two months to relevant organizations in order to identify geospatial needs and inform and provide GSI's products for response activities. One destination was Cabinet Secretariat's emergency operation center. The other destination was Disaster Response Headquarters of Ministry of Land, Infrastructure, Transport and Tourism (MLIT), to which GSI belongs.

Further, GSI sent its liaisons to local disaster operation centers in Miyagi, Iwate and Fukushima prefectures. The liaisons consisted of special team (called "TEC-FORCE") and staff of Tohoku Regional Survey Department of GSI. They introduced GSI's products to related organizations and provided the products for the use in field operation.

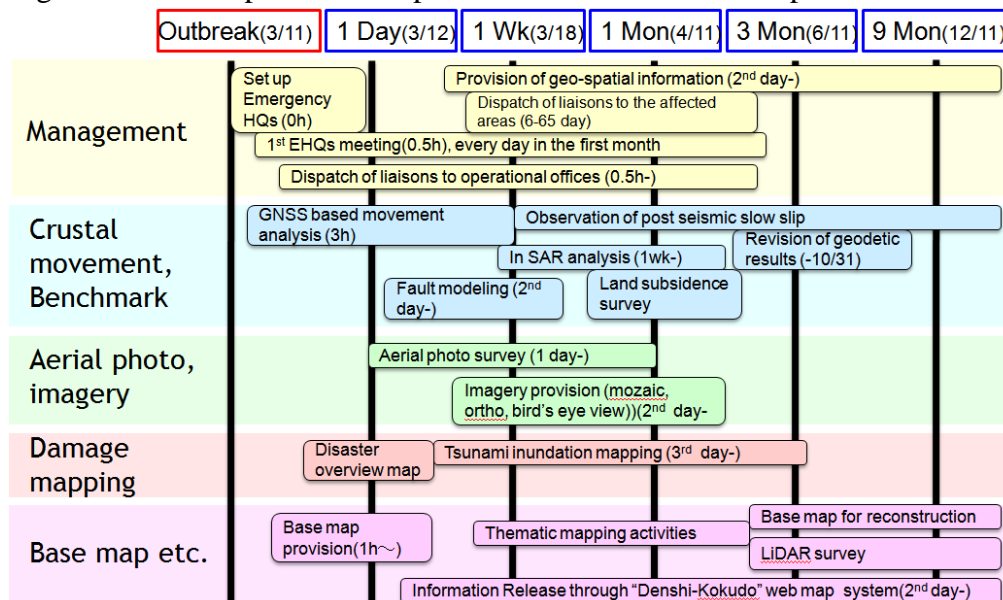


Figure 1 Summary of GSI disaster response activities

4.2 Ground surface movements

Since 1995, GSI has installed the GEONET system, with 1,200 GNSS continuous observation stations throughout the country for location reference services and detection of crustal deformation. After the main shock, GSI made its best efforts to get initial results of ground surface movements, struggling with power outage and unstable communication line. On the same day, GSI disclosed that four m eastward movement and 70cm subsidence occurred at Kahoku GNSS based station. After a week, analysis of salvaged station data further revealed that Osika station, closed to the epicenter of the main shock, moved 5.3 m eastward and subsided 1.2 m. This movement was the largest one in the GEONET observation history (GSI,

2011a) (Figure 1 and 2)

A fault surface slip distribution model was derived from the GEONET observation data (Figure 3). According to the mode, the extent of slipping area was 450 km (long axis) and 200 km (short axis) with the maximum dislocation of 27 meters. This magnitude of slipping and accompanying post seismic dislocation can be compared with the release of stress of plate boundary accumulated 350 – 700 years (Ozawa et al., 2011).

It is notable that a large post seismic slipping movement occurred even after the main shock. This post seismic movement amounted to 88 cm at Yamada GNSS-based station in Iwate prefecture by February 2012. The total energy released during the movements was estimated to be 8.58 at the scale of moment magnitude (GSI, 2011c). This movement posed a difficult decision making in justifying the timing of determination and announcement of new geodetic results in affected areas (Yamagiwa et al., 2012).

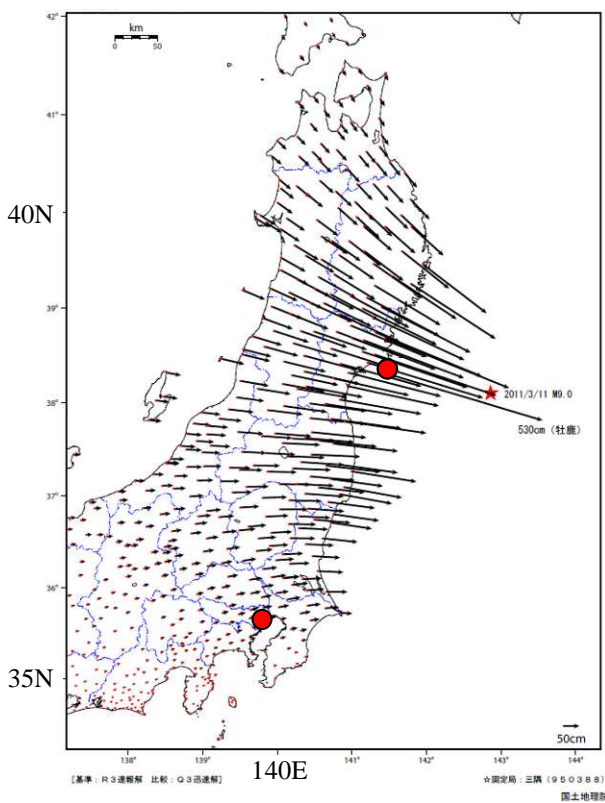


Figure 1 Horizontal displacements by the main shock (GSI, 2011a)

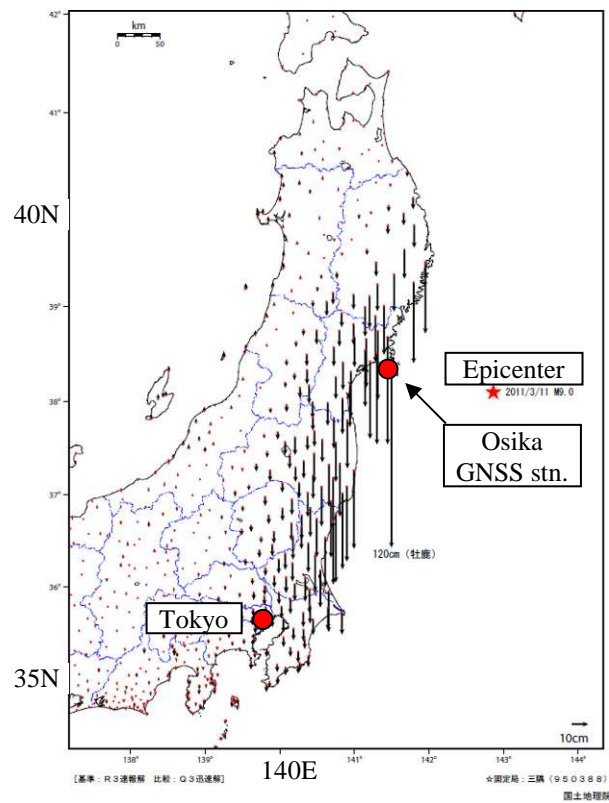


Figure 2 Vertical displacements by the main shock (GSI, 2011a)

GSI also detected surface movements by exploiting SAR (Synthetic Aperture Radar) interferometry (In SAR) method. Original data were captured by PALSAR sensor loaded on ALOS (Advanced Land Observation Satellite) by JAXA (Japan Aerospace Exploration Agency). Several batches of data observed from March to April 2011 were analyzed. Figure 4 shows the result. The results of surface movements estimated by InSAR analysis were concordant with that of GNSS observation. The areas moved extended 600 km N-S and 200

km E-W directions. The largest movement (in the sense of difference in distances between pre- and post- earthquake from the sensor on board in the orientation of radar beam emitted) was 4 meters. Figure 4 also shows the local displacements caused by aftershocks during March and April (GSI, 2011d).

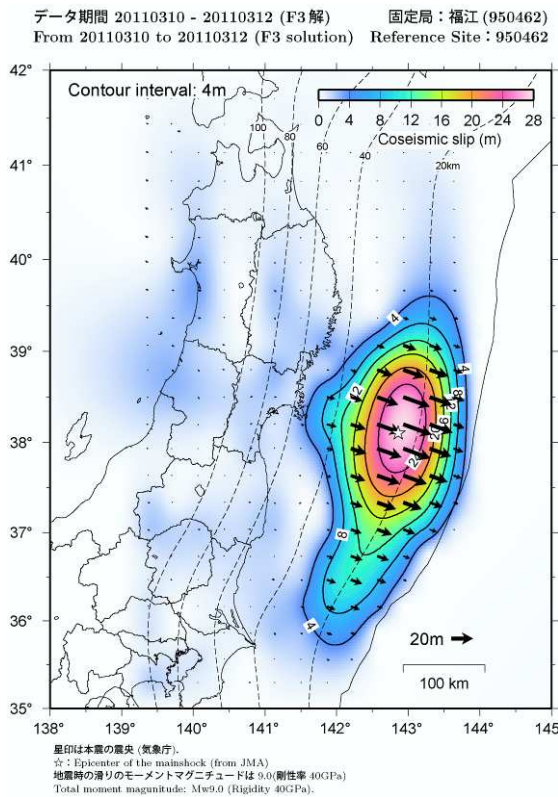


Figure 3 Estimated slip distribution on the earthquake fault plane (GSI 2011b)

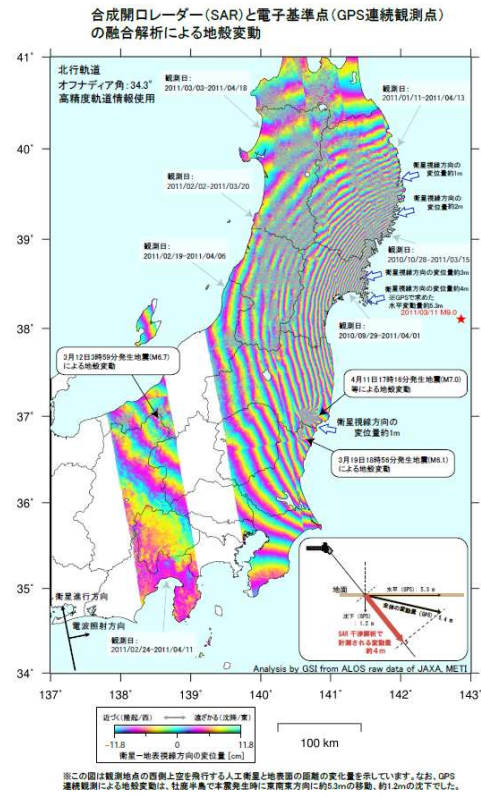


Figure 4 Surface movement distribution estimated by In SAR analysis (GSI 2011d)

4.3 Aerial photo survey

It is imperative for geospatial information organizations to take a quick action of acquiring imagery for damage reconnaissance in any circumstances. When the main shock occurred, GSI's survey aircraft "Kunikaze III" had been in process of periodical mechanical check till 31 March 2011. The first thing GSI aerial survey team did was to ensure the availability of survey aircrafts of private companies, based on the Memorandum of Understanding between GSI and APA (Association of Precise Survey and Applied Technology) on the mobilization of survey companies' aircrafts in emergency cases. Six companies responded to the emergency request by GSI on that day. In parallel, GSI asked the MLIT and its regional bureau for their areas of interest for aerial photo survey. In spite of confusion and insufficient information just after the main shock, GSI compiled their requests and other information for the completion of survey plan, delegated to air crew teams.

Thanks to the nice weather, the air crew teams took aerial photos of major damaged areas on 12 and 13 March. The remaining areas were taken in the following survey missions. Final

aerial photo coverage was blue areas in Figure 5. Acquired data were duly processed as quickly as possible, mobilizing resources throughout the night. In general, the data were delivered to major government organizations and uploaded to GSI's website on the next day. When the first photograph appeared on GSI's website on 14 March, the access by the public suddenly increased. Some people gratefully reported that they were relieved to make sure that their friends' house was not damaged nor broken by the tsunami by viewing the photographs on the website.

Aerial photo products were produced in order series. Firstly, simple photos were made. Then photos were orthorectified using GPS/IMU data on the aircraft. Accordingly orthophotos and orthophotomap (Figure 6) (orthophoto overlain by line map with locality names and symbols) were produced. Orthophoto pairs were also made to show the difference of landscape before and after the earthquake in specific areas (Figure 7). Later bird's eye view (oblique view) aerial photos were also taken in additional aerial survey missions and released to the public.

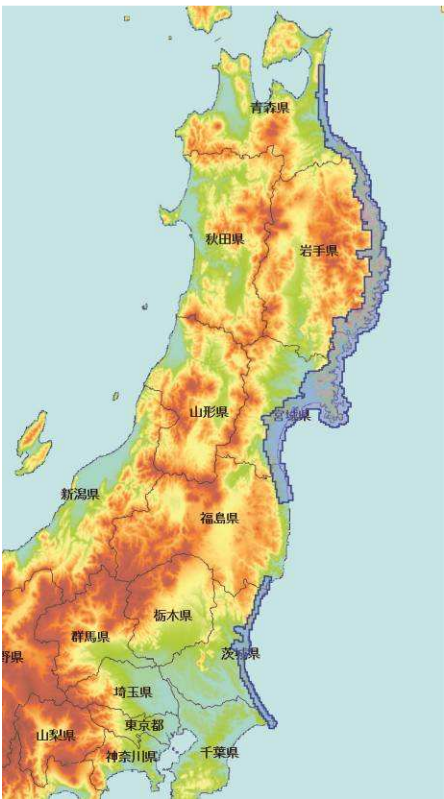


Figure 5 Aerial photo coverage (GSI 2011e)

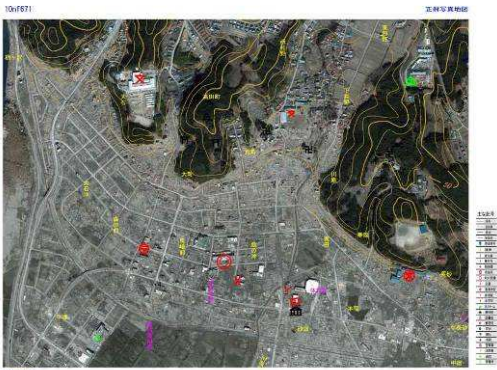


Figure 6 An example of orthophotomap (10NF671), Rikuzentakada city (GSI 2011f)

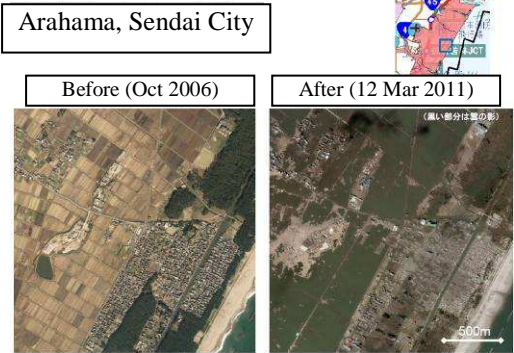


Figure 7 Landscape difference, before and after the earthquake (GSI 2011g)

4.4 Tsunami inundation mapping

Because it became clear that most damages were caused by the huge tsunami, identification of tsunami inundation areas became so important that various organizations including Cabinet Secretariat requested GSI to conduct it. Responding to their requests, GSI organized a

working team consisting of staff members who are good at aerial photo interpretation.

When the first aerial photographs were delivered in the afternoon of 13 March, the team interpreted them to delineate the inundation areas by the tsunami. 1,900 aerial photos were interpreted to make the first version of inundation map for the delivery to the Cabinet Secretariat and major institutions on 14 March. No sooner had additional aerial photographs of damaged areas arrived, the team interpreted and delineated additional areas. Finally it was found that 561 sq. km was inundated by the tsunami. Half of inundated areas were located in Miyagi prefecture (327 sq. km). Land use map series of inundated areas were also produced to show the character of land use pattern of inundation areas. The index map is shown in Figure 8. Inundation area map is shown in Figure 9. Land use of inundated area is in Figure 10.



Figure 8 Index of inundation area map (GSI 2011h)

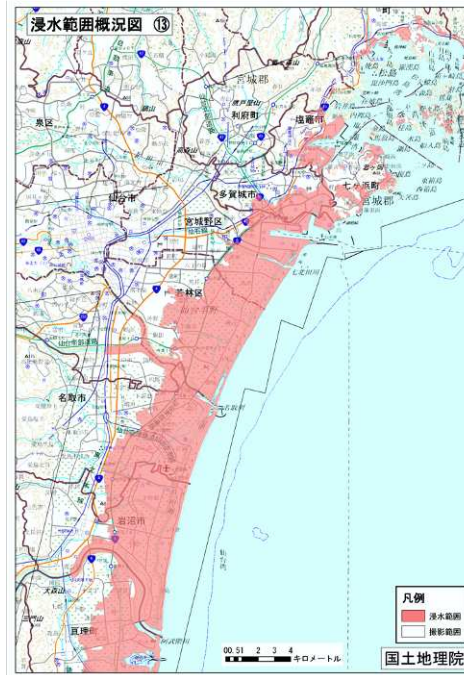


Figure 9 An example of inundation area map, Sendai area (GSI 2011h)

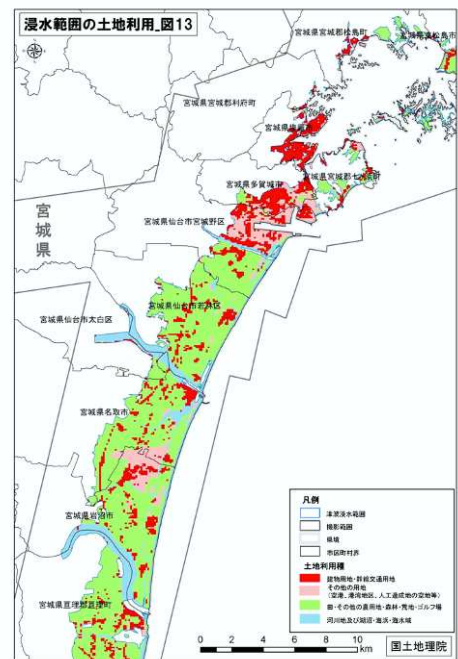


Figure 10 An example of inundation area land use map, Sendai area (GSI 2011i)

4.5 Provision of base maps and other activities

Responding to the high needs of base maps (topographic maps etc.) for disaster operation management, GSI also delivered them to the requesting organizations. On the day of the main shock, Japan Map Center (a public organization associated with GSI) delivered paper maps at various scales to major government bodies on behalf of GSI. Electric data of base maps became available from the GSI's the website accordingly.

Several kinds of thematic maps were also produced. One example is the recovery progress map (Figure 11). The purpose of the map is to show the status of recovery of major transport infrastructure (road, railway, port and airport) on a regular update basis. This map, which was

a collaboration result of GSI and relevant bureaux of MLIT, got publicity in a certain period. Another example is the evacuation zoning map (Figure 12). The government designated evacuation zoning areas around Fukushima nuclear power plant on 22 April 2011. Accordingly, GSI produced the map in collaboration with Cabinet Secretariat operation center and made it public. Geospatial information analysis and cartographic capability of GSI was effectively utilized to ensure information accessibility of the public.



Figure 11 Recovery progress map (GSI 2011j)



Figure 12 Evacuation zoning map (GSI 2011k)

4.6 Provision of geospatial information

GSI's disaster related products were mainly delivered by four methods. The first method was to use humanitarian relief transportation system operated by JSDF (Japanese Self Defense Force). This method was applied to deliver necessary geospatial products in poor transport environment to support malfunctioning local governments by the disaster. The second method was providing information through GSI liaisons (TEC-FORCE) attached to local disaster headquarters. The third method was provision through the Geospatial Information Support Team. This team was set up for the first time in EHQs, acting as the one-stop center of provision of products to meet high demands of geospatial information from public organizations. The fourth method was provision through the website (www.gsi.go.jp) mainly targeting the general public.

Table 1 shows the numbers of cases of provision s by the second and the third methods.

Totally 1,491 cases were handled (Nakai et al., 2012). 90% of requesting organizations were central and local government organizations.

Table 1 Numbers of cases of GSI products provision (as of 25 November 2011)

Product		GSI initiative based cases	Request based cases	Total
Geodetic etc	Geodetic results of reference points	0	7	7
	Crustal movement data	0	6	6
Aerial Photos	Areal photographs	234	73	307
	Orthophotos	195	81	276
	Bird's eye view photos	0	6	6
	Ortho photo maps	161	59	220
Tsunami inundation map		2	0	2
Basemap	Small scale maps	38	1	39
	1:200,000 scale regional maps	8	0	8
	1:50,000 scale topographic maps	33	8	41
	1:25,000 scale topographic maps	1	11	12
	Print outs of web based basic maps	3	17	20
	Historical topographic maps	0	2	2
	Wide area base map for disaster operation	6	28	34
Thematic maps and Others	Transport recovery progress map	167	175	342
	Base map for recovery and reconstruction	4	12	16
	Digital elevation map	1	7	8
	Concentric circle map around the nuclear power plants	2	15	17
	DEM at 5 m resolution	0	30	30
	Images captured by mobile mapping system (MMS)	0	2	2
	Homepage service with restricted access	26	2	28
	Order made map	5	20	25
	Others	16	27	43
Total		902	589	1491

In addition to the cases summarized in Table 1, much more products were browsed and downloaded from the website. The number of access to GSI website in the following several months after the earthquake doubled compared to that in the previous year.

4.7 Use of geospatial information

Major purposes of use of geospatial information for disaster response provided by GSI were as follows (Nakai et al., 2012): damage identification; information sharing; reconstruction activities; spatial analysis; recovery activities; and field operations. The following list shows some examples of use of geospatial information of relevant organizations.

- Damage identification, issuance of building damage certification to citizens (local governments)
- Operation of searching for dead bodies (police, Self Defense Force)

- Facility damage identification (MLIT)
- Evaluation of property taxation in damaged areas (Ministry of Internal Affairs and Communications)
- Inundation of farm lands, damage mapping of national forests (Ministry of Agriculture, Forestry and Fisheries)
- Cultural properties' damage mapping, radioactive distribution mapping (Ministry of Education, Culture, Sports, Science and Technology)
- Articles describing damage situation by the disaster(news paper companies)
- Redistributing geospatial products through web mapping sites in support of damaged areas (IT companies and volunteer groups)
- Enterprise affection evaluation (corporate analysis consultants)

The magnitude and the significance of the disaster made the GSI geospatial information product applied for various purposes in a wide variety of fields beyond expectations. This situation has never happened in previous disaster responses.

4.8 Reconstruction support activities

GSI does not only conduct disaster response activities. Because the positional reference framework and basic geospatial information are always indispensable for recovery and reconstruction works which would take at least several years in damaged areas, GSI developed such information base to support reconstruction activities in the areas, utilizing supplemental national budget for reconstruction for the fiscal year 2011.

The first area is the revision of geodetic framework. A large ground surface movements by the earthquake required total revision of coordinates of ground control points in the area. First, the results of GNSS based stations were revised by the end of May 2011. In succession resurvey of 1,900 triangulation points and 1,900 bench marks was implemented, resulting in the new coordinate results announced in the end of October 2011, including correction parameters for the unsurveyed 40,000 triangulation stations. The detailed aspects of this work are precisely reported in Yamagiwa et al. (2012).

The second area is the development of 1:2,500 base map in support of reconstruction planning. The damaged areas of 4,200 sq. km were photographed from May 2011. The cartographic works for base maps included features recognized both before and after the earthquake to facilitate map reading. The early delivery of draft map to local governments has started from August 2011, followed by the start of delivery of the final map in January 2012.

The third area is developing DEM by airborne LiDAR survey. 10,876 sq. km of coastal areas affected by the tsunami and mountain areas vulnerable to landslides were covered by the survey. Acquired raw data were processed into DEM at 5 meter (partly 2 meter) resolution for the use of national and local governments to formulate measures against land subsidence, inundation and landslides. Using the DEM, detailed elevation cartography was also produced to ease the visual understanding of local/regional elevation settings in subject areas.

5. ACHIEVEMENTS AND CHALLENGES

The following achievements were identified as a result of GSI's disaster response activities.

- A chain of quick actions of data gathering and development enabled GSI to release its products in early period of disaster response. This is the result of experiences accumulated among the staff, regular drilling and necessary provision of equipment beforehand.
- Devising new arrangements for efficient data delivery: Geospatial Information Support Team performed well in providing data, interacting with requesters on their needs. Collaborations with other government organs for data delivery to difficult areas also worked. Posting liaison to disaster operation offices was also effective to catch-up with rapidly changing needs of organizations according to post disaster phase development.
- A wide range of usage of GSI geospatial information products were recognized quantitatively and qualitatively. In fact, this large disaster gave GSI an opportunity to demonstrate the capability of national mapping organization for damage reconnaissance and supporting reconstruction activities.

While appreciating the achievements above, following challenges were also recognized and urge GSI to further improve its disaster response capabilities.

- Resiliency and redundancy of energy, communication and facilities: Some data from GNSS based station were lost or unable to send due to destruction of communication and power lines. Supplementary battery did not allow the stations to work more than 72 hours after power outage. By external failures, GSI headquarters were also struck by power outage and internet disconnection. Although it did not cause serious consequences, it urged GSI to reinforce its back up equipment such as auto generator, water storage and other facilities.
- Although the performance of geospatial information development and provision were appreciative, there are still rooms for further improvement. After the disaster, GSI reviewed its response activities, found problems and proposed solutions for further improvement. Some of the solutions were tested in disaster response drills thereafter.
- Actually, Not all the users are satisfied with GSI's data provision. Particularly, volunteer mapping community, which emerged in recent years for disaster response, are not satisfied with technical and policy aspects of GSI's data provision. Their claim reflects the GSI's emphasis on products provision to rescue and recovery organization (mostly public) and non-professional general public through its web site. GSI needs to optimize its performance to satisfy diversified data needs in emergency through establishing public relations with various stakeholders during inter-disaster periods.

GSI is now reviewing its Disaster Management Operation Plan and Manual to align organizational efforts in responding to the above challenges.

6. CONCLUSION

According to its missions, GSI conducted response activities at full strength against the tragic East Japan Great Earthquake. Geospatial information products developed and provided by GSI were well utilized and applied by peoples and organizations during rescue, recovery and

reconstruction phases. Although achievements were obvious, new challenges were recognized through the experience, prompting continuous improvement of disaster response capabilities. As occurrence of natural disasters never ends in Japan, GSI will make its best efforts to provide geospatial information products those who need them in a timely manner, fully recognizing the expected role as the national mapping organization in changing societal context.

REFERENCES

- GSI (2011a): Crustal movements of GNSS-based control stations by GNSS earth observation (Japanese), in <http://www.gsi.go.jp/chibankansi/chikakukansi40005.html> (accessed 28/02/2012)
- GSI (2011b): Slip distribution model by the analysis of GNSS-based control station data (Japanese), in <http://www.gsi.go.jp/cais/chikakuhendo40007.html> (accessed 28/02/2012)
- GSI (2011c): Post seismic movement and slip distribution model by the analysis of GNSS-based control station data (Japanese), in <http://www.gsi.go.jp/cais/topic110314-index.html> (accessed 28/02/2012)
- GSI (2011d): Capturing area-wide crustal movement by the 2011 off the Pacific coast of Tohoku Earthquake, final version (Japanese), in <http://www.gsi.go.jp/uchusokuchi/uchusokuchi40010.html> (accessed 29/02/2012)
- GSI (2011e): Aerial photographs of affected area and around (Japanese), in http://portal.cyberjapan.jp/denshi/index3_tohoku.html (accessed 29/02/2012)
- GSI (2011f): Orthophoto map of Sanriku Minami area (2) (Japanese), in http://saigai.gsi.go.jp/h23taiheiyo-zort/map/sanrikus/index_sanrikus_N.html (accessed 29/02/2012)
- GSI (2011g): New and old photograph of Arahama, Wakabayashi-ku, Sendai-shi (Japanese), in <http://saigai.gsi.go.jp/h23taiheiyo-ok/hikaku/arahama.pdf> (accessed 29/02/2012)
- GSI (2011h): Inundation area map at 1:100,000 scale (Japanese), in <http://www.gsi.go.jp/kikaku/kikaku60003.html> (accessed 29/02/2012)
- GSI (2011i): Land use of tsunami inundation areas (Japanese), in <http://www.gsi.go.jp/chirijoho/chirijoho40022.html> (accessed 29/02/2012)
- GSI (2011j): Transportation infrastructures recovery progress map (Japanese), in http://www.gsi.go.jp/johofukyu/kotu_link.html (accessed 29/02/2012)
- GSI (2011k): Maps related to Fukushima nuclear power plant accident (Japanese), in <http://www.gsi.go.jp/BOUSAI/h23genpatu.html> (accessed 29/02/2012)
- JMA (Japan Meteorological Agency) (2012): The 2011 off the Pacific coast of Tohoku Earthquake -Portal-, in http://www.jma.go.jp/jma/en/2011_Earthquake.html (accessed 28/02/2012)
- Nakai, H., T. Nagayama, T. Hayashi, M. Tsukui, H. Segawa, K. Akiyama, and S. Matsumoto (2012): Actions of GSI in response to the Great East Japan Earthquake (Japanese), in *Kokudochiriin Jiho* (in press.)
- NPA (National Police Agency) (2012): Damage Situation and Police Countermeasures associated with 2011 Tohoku district - off the Pacific Ocean Earthquake, in http://www.npa.go.jp/archive/keibi/biki/higaijokyo_e.pdf (accessed 28/02/2012)
- Ozawa, S., T. Nishimura, H. Suito, T. Kobayashi, M. Tobita, and T. Imakiire (2011):

Coseismic and postseismic slip of the 2011 magnitude-9 Tohoku-Oki earthquake, *Nature*, **475**, 373-376, doi:10.1038/nature10227

TETJSG (Tohoku Earthquake Tsunami Joint Survey Group)(2012): The 2011 off the Pacific coast of Tohoku Earthquake Tsunami Information, in <http://www.coastal.jp/tsunami2011/index.php> (accessed 28/02/2012)

USGS (United States Geological Survey) (2012): Largest Earthquakes in the World Since 1900, in http://earthquake.usgs.gov/earthquakes/world/10_largest_world.php (accessed 28/02/2012)

Yamagiwa, A., Y. Hiyama, T. Yahagi, H. Yarai, T. Imakiire and Y. Kuroishi (2012): Revision of the results of reference points after the 2011 off the Pacific coast of Tohoku earthquake. FIG 2012 proceedings (in press.)

BIOGRAPHICAL NOTES

Since joining GSI, Toru Nagayama has mainly worked for thematic mapping, international cooperation and disaster management areas. He also worked as mapping advisor to Timor-Leste (East Timor) government in 2009-2011.

Kazuo Inaba has experienced various fields of geospatial information administration in GSI. He currently takes the position of Director-General of Planning Department where planning, operation management, disaster management, external coordination issues are administered.

Tamotsu Hayashi has a good career as a geodetic surveyor. Recently his work shifted on administrative areas such as policy coordination works, public relations works and has been the head of disaster prevention promotion office in GSI since April 2011.

Hiroyuki Nakai has developed his career in GSI mainly geodetic fields including InSAR analysis and maintenance of GEONET system. He also made good efforts of compiling GSI's disaster response activities to the Great East Japan Earthquake for archives where the source information of this paper comes from.

CONTACTS

Toru NAGAYAMA
Director-General
Hokkaido Regional Survey Department
Geospatial Information Authority of Japan
Sapporo Daiichi Government Building,
2-1-1 Kita Hachijo Nishi, Kita-ku
Sapporo-shi, Hokkaido 060-0808
JAPAN
Tel. +81-11-709-2311
Fax +81-11-709-2498
Email: nagayama@gsi.go.jp
Web site: <http://www.gsi.go.jp>