



Spatial Information Management in the Context of SDI and e-Government – The German Approach




Dr. Jens Riecken

FIG WW 2007
TS1D
2007-05-14

Spatial Information Management in the Context of SDI and e-Government – The German Approach




Spatial Information Management in the Context of SDI and e-Government – The German Approach



- 1 introduction – Germany, NRW, geoGovernment
- 2 GDI.NRW, local SDI-initiatives
- 3 cross-border SDIs
- 4 GDI-DE
- 5 conclusion

FIG WW 2007
TS1D
2007-05-14

Spatial Information Management in the Context of SDI and e-Government – The German Approach



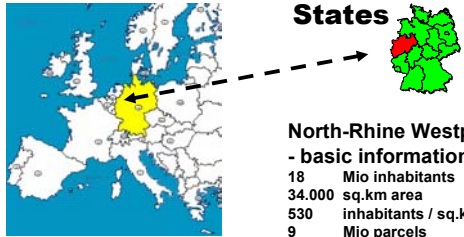
1 Germany: e-Government in a Federal Environment

FIG WW 2007
TS1D
2007-05-14

Spatial Information Management in the Context of SDI and e-Government – The German Approach



The German States




North-Rhine Westphalia - basic information -

- 18 Mio inhabitants
- 34.000 sq.km area
- 530 inhabitants / sq.km
- 9 Mio parcels
- 7 Mio buildings
- 31 Counties
- 23 (independent) Cities
- 373 (dependent) Towns

FIG WW 2007
TS1D
2007-05-14

Spatial Information Management in the Context of SDI and e-Government – The German Approach




Basic Geoinformation in Germany

- Satellite Positioning System (**SAPOS**)
- Official Reference Point Information System (**AFIS**)
- Authoritative Topographic-Kartographic Information System (**ATKIS**)
- Official Cadastre Information System (**ALKIS**)

FIG WW 2007
TS1D
2007-05-14

Spatial Information Management in the Context of SDI and e-Government – The German Approach



geoGovernment in Germany

- GDI-DE and Deutschland-Online
 - 2 corresponding projects of Federation, States and Counties/Municipalities
- SDI-initiatives of the States
 - Example from NRW
- SDI on the local level
 - Example: SDI-initiatives in the region of Bonn





FIG WW 2007
TS1D
2007-05-14

Spatial Information Management in the Context of SDI and e-Government – The German Approach



2.1

GDI-NRW

(SDI of North-Rhine Westphalia)

FIG WW 2007
TS1D
2007-05-14

Spatial Information Management in the Context of SDI and e-Government – The German Approach



Development of GDI.NRW

Market studies <http://www.nicus.de/downloads.htm#markt>

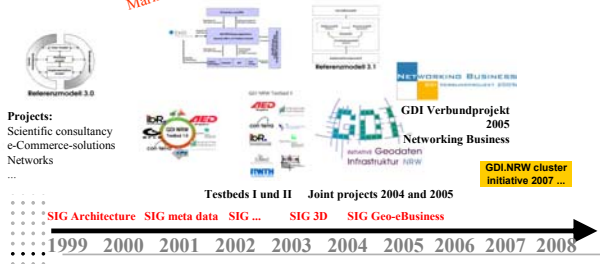


FIG WW 2007
TS1D
2007-05-14

Spatial Information Management in the Context of SDI and e-Government – The German Approach



GDI NRW – state of the art

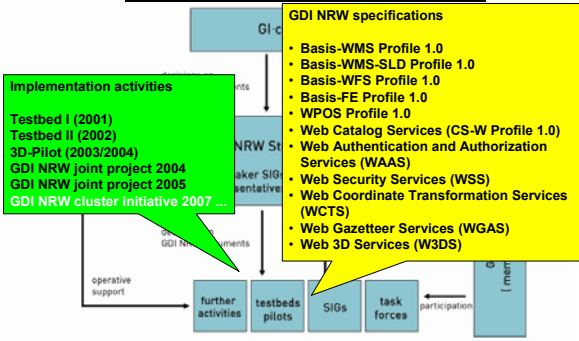


FIG WW 2007
TS1D
2007-05-14

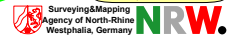
Spatial Information Management in the Context of SDI and e-Government – The German Approach



www.TIM-online.nrw.de - eGovernment in practice award: „best project 2004“

FIG WW 2007
TS1D
2007-05-14

Spatial Information Management in the Context of SDI and e-Government – The German Approach



Results of GDI.NRW



FIG WW 2007
TS1D
2007-05-14

Spatial Information Management in the Context of SDI and e-Government – The German Approach



Environmental protection

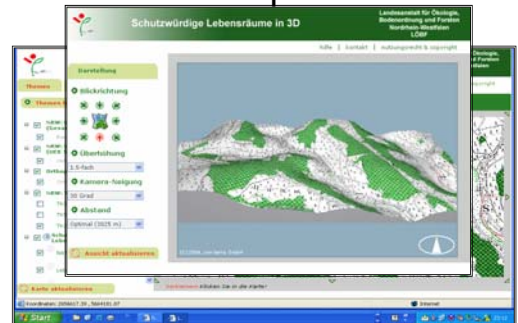


FIG WW 2007
TS1D
2007-05-14

Spatial Information Management in the Context of SDI and e-Government – The German Approach



Noise mapping

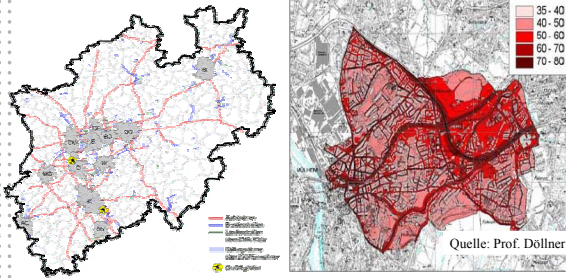


FIG WW 2007
TS1D
2007-05-14

Spatial Information Management in the Context of SDI and e-Government – The German Approach



3D-Data for noise mapping – a new demand for data management



FIG WW 2007
TS1D
2007-05-14

Spatial Information Management in the Context of SDI and e-Government – The German Approach

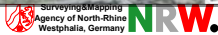


3D-future perspective



FIG WW 2007
TS1D
2007-05-14

Spatial Information Management in the Context of SDI and e-Government – The German Approach



2.2

Local SDI-initiatives in NRW Example: region of Bonn

FIG WW 2007
TS1D
2007-05-14

Spatial Information Management in the Context of SDI and e-Government – The German Approach



Bonn region

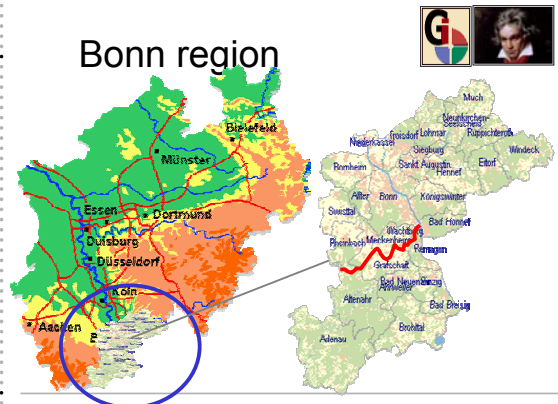


FIG WW 2007
TS1D
2007-05-14

Spatial Information Management in the Context of SDI and e-Government – The German Approach



Goals of the Initiative

- Fortification of the „Bonn region“ as geo-region
- Supporting new business founders and recruiting new enterprisers
- Providing spatial information to users
- Business enlargement through geo-marketing
- Opening of new markets by innovative sector solutions
- Synergy effects by common data use and applications
- Providing trade platforms

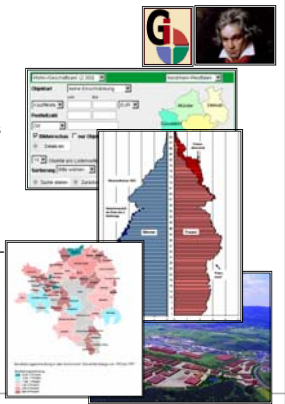
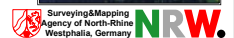


FIG WW 2007
TS1D
2007-05-14

Spatial Information Management in the Context of SDI and e-Government – The German Approach



Portal of the Initiative

profile
housing
business
education
recreation
traffic
home

Spatial information - SDI

W.

3.1

cross-border SDIs

INTERREG IIIA: X-Border GDI NL/NRW

FIG WW 2007
TS1D
2007-05-14

Spatial Information Management in the Context of SDI and e-Government – The German Approach

Surveying&Mapping Agency of North-Rhine Westphalia, Germany **NRW.**

INTERREG IIIA: X-Border GDI NL/NRW

EUREGIO
Prv. Gelderland, Prv. Overijssel, Prv. Drenthe, Nds Grafschaft Bentheim und Osnabrück, NRW Kreise Borken, Coesfeld, Steinfurt, Warendorf, Stadt Münster, insg. 3,2 Mio EW

Euregio Rhein Waal
Prv. Gelderland, Prv. Noord Brabant, Prv. Limburg (Noord), Kreise Kleve, Wesel, Stadt Duisburg, insg. 2,7 Mio EW

Euregio Rhein Mass Nord
Prv. Limburg (Noord en Midden), Kreise Kleve, Neuss und Viersen, Städte Krefeld und Mönchengladbach, insg. 1,8 Mio EW

Euregio Maas Rhein
Prv. Limburg (Zuid), Regio Aachen, Prv. Limburg B, Prov. Liège B, Deutschsprachige Gemeinschaft B, insg. 3,8 Mio EW

FIG WW 2007
TS1D
2007-05-14

Spatial Information Management in the Context of SDI and e-Government – The German Approach

Surveying&Mapping Agency of North-Rhine Westphalia, Germany **NRW.**

3.2

cross-border SDIs

INTERREG IIIC

CROSS sis
cross-border spatial information system

FIG WW 2007
TS1D
2007-05-14

Spatial Information Management in the Context of SDI and e-Government – The German Approach

Surveying&Mapping Agency of North-Rhine Westphalia, Germany **NRW.**

INTERREG IIIC Regional Framework Operation (RFO) “Change on Borders”

- The partnership consists of **25 border regions from 15 European countries**
- Different border regions work together in order to **share knowledge about regional development in a cross-border context**
- Objective: develop solutions to **environmental and environmental challenges**

regional laboratory: CROSS-SIS

FIG WW 2007
TS1D
2007-05-14

Spatial Information Management in the Context of SDI and e-Government – The German Approach

Surveying&Mapping Agency of North-Rhine Westphalia, Germany **NRW.**

Cross-SIS Architecture

PROJECT PART-FINANCED BY THE EUROPEAN UNION

INTERREG IIIC

Change on Borders

www.cross-sis.com

Service oriented architecture

statistics pilot
planning pilot
European reference data
WMS
Regional data from Navarra
Regional data from Gelderland
Regional data from Navarra
Regional data from Overijssel
Regional data from Limburg

Web-clients are developed for the two pilots

FIG WW 2007
TS1D
2007-05-14

Spatial Information Management in the Context of SDI and e-Government – The German Approach

Surveying&Mapping Agency of North-Rhine Westphalia, Germany **NRW.**

4

SDI in Germany – GDI.DE

FIG WW 2007
TS1D
2007-05-14

Spatial Information Management in the Context of
SDI and e-Government – The German Approach



Spatial Data Infrastructure Germany

-political level -

WG of the State Secretaries
for eGovernment and
Deutschland-Online
(State and federal levels)

-conceptual level -

GIW-commission
 („Taskforce“)
Managed by: BMWA
(D 21, associations like: DDGI, DfHK,
DMMV, Bitkom, eco, Bundesverband
mittelständischer Unternehmen)

GDI-DE Board

Proposals

Decisions

Proposals

Decisions

-technical level -

GIW office

GDI-DE office

Data and service providers
User groups, research institutes, industry, OGC, ... special Interest Groups (SIGs)

FIG WW 2007
TS1D
2007-05-14

Spatial Information Management in the Context of
SDI and e-Government – The German Approach



Spatial Information Management in the Context of SDI and e-Government – The German Approach

5

Conclusions

FIG WW 2007
TS1D
2007-05-14

Spatial Information Management in the Context of
SDI and e-Government – The German Approach



Germany – state of the art

Establishment of a Spatial Data Infrastructure – Requirements for players

- Openness/frankness
- Willingness for cooperation
- Active cooperation
- Willingness for communication
- Common goals

*SDI
– success factors*

FIG WW 2007
TS1D
2007-05-14

Spatial Information Management in the Context of
SDI and e-Government – The German Approach



<http://deutschlandviewer.bayern.de/deutschlandviewer/GermanyViewer.html>

Examples



<http://www.tim-online.nrw.de> <http://www.boris.nrw.de>



<http://www.wohnregion-bonn.de> <http://kreis-steinfurt.map-server.de/>

FIG WW 2007
TS1D
2007-05-14

Spatial Information Management in the Context of
SDI and e-Government – The German Approach



Thank you very much for your attention!