

**La terra che brucia La civiltà' del deserto e  
elementi dell'architettura sostenibile**

**The burning earth the civilization of the desert,  
elements of sustainable architecture**



**presentato a coifa summer school luglio 2014**

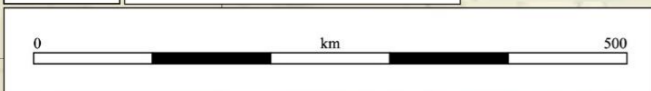
**presented in coifa summer school occasion july 2014**





|        |   |                |
|--------|---|----------------|
| 3500 m | ☆ | Capital        |
| 3000 m | ● | City           |
| 2500 m | — | Country border |
| 2200 m | — | Free way       |
| 2000 m | — | Main road      |
| 1800 m | — | Railways       |
| 1500 m | — | Stream         |
| 1200 m | — | Lake           |
| 1000 m | — | Salt lake      |
| 800 m  | ▲ | Peak           |
| 600 m  | — | Port           |
| 500 m  | — | Airport        |
| 400 m  |   |                |
| 300 m  |   |                |
| 200 m  |   |                |
| 100 m  |   |                |
| 50 m   |   |                |
| 0 m    |   |                |

Equidistant Cylindrical projection  
WGS84 datum



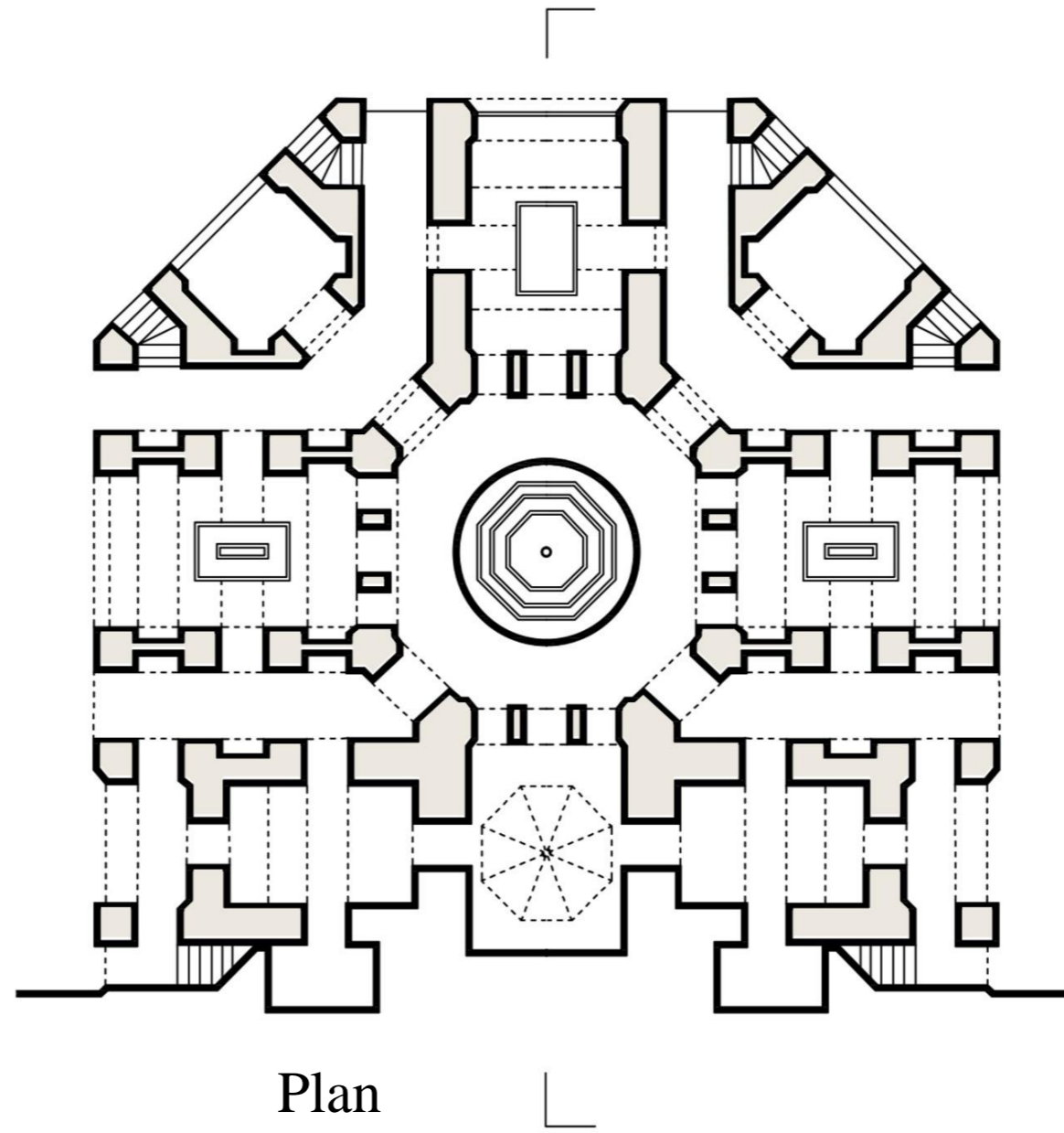


# Badgir

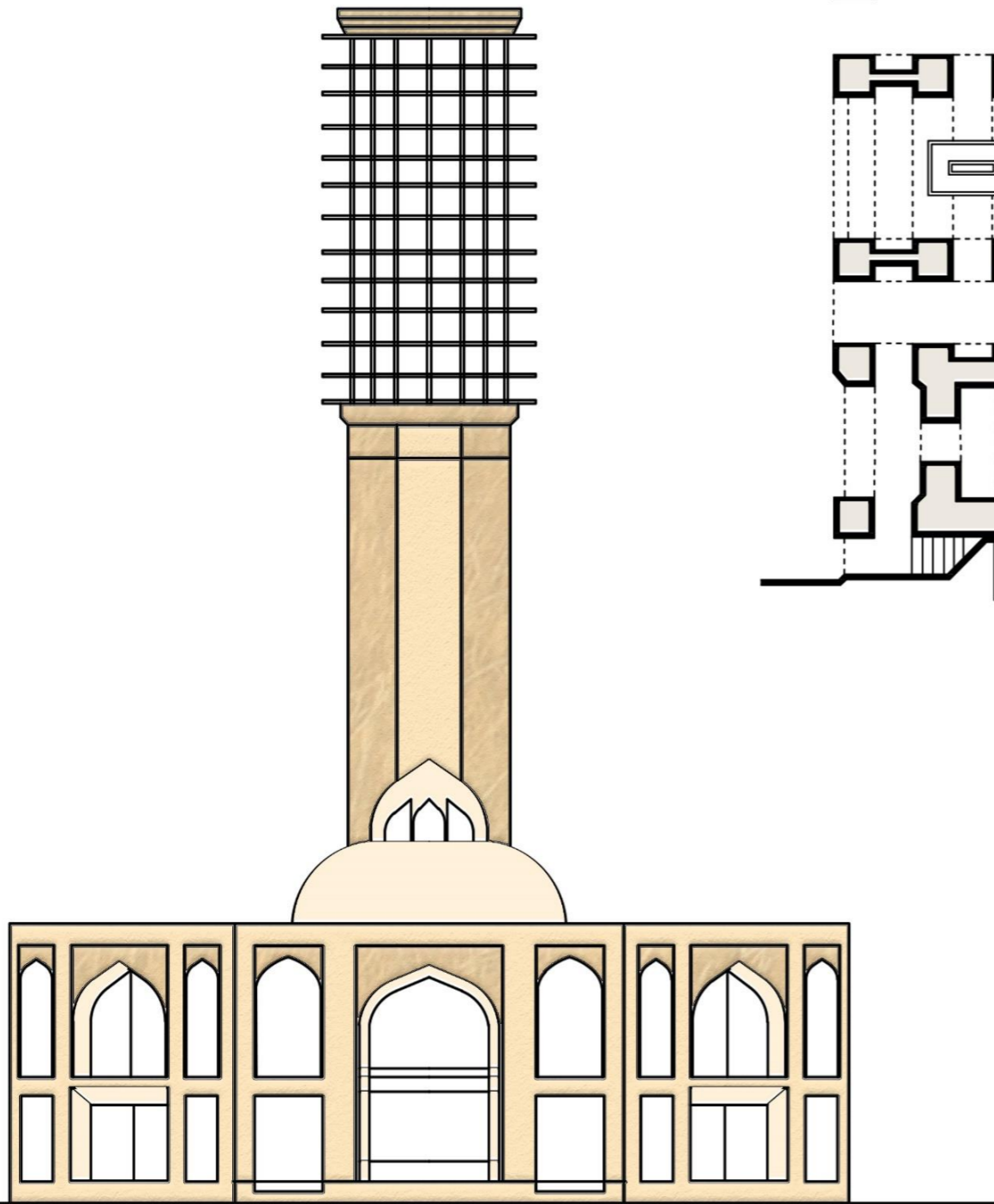


# Badgir

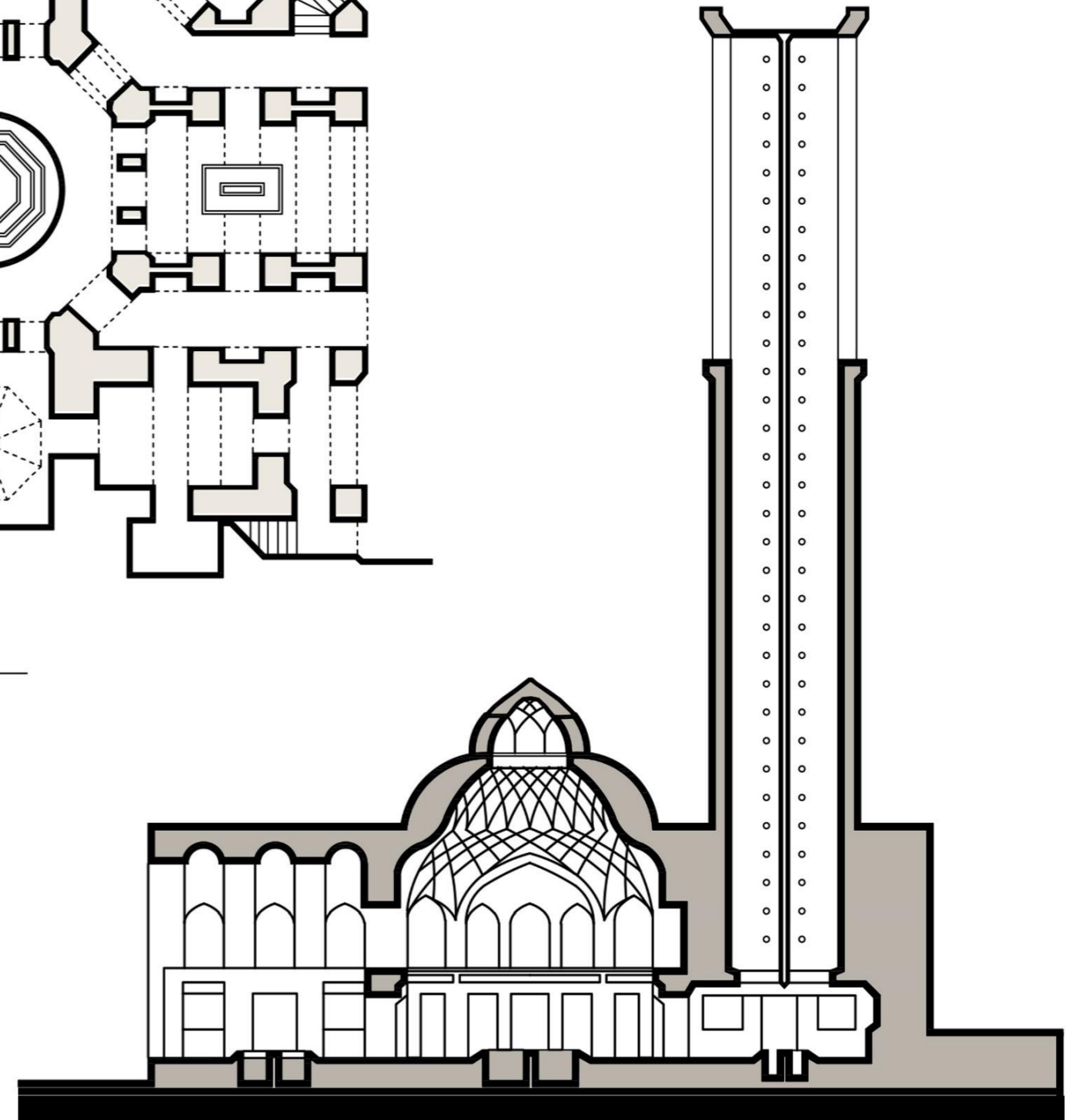
---



Plan



Elevation

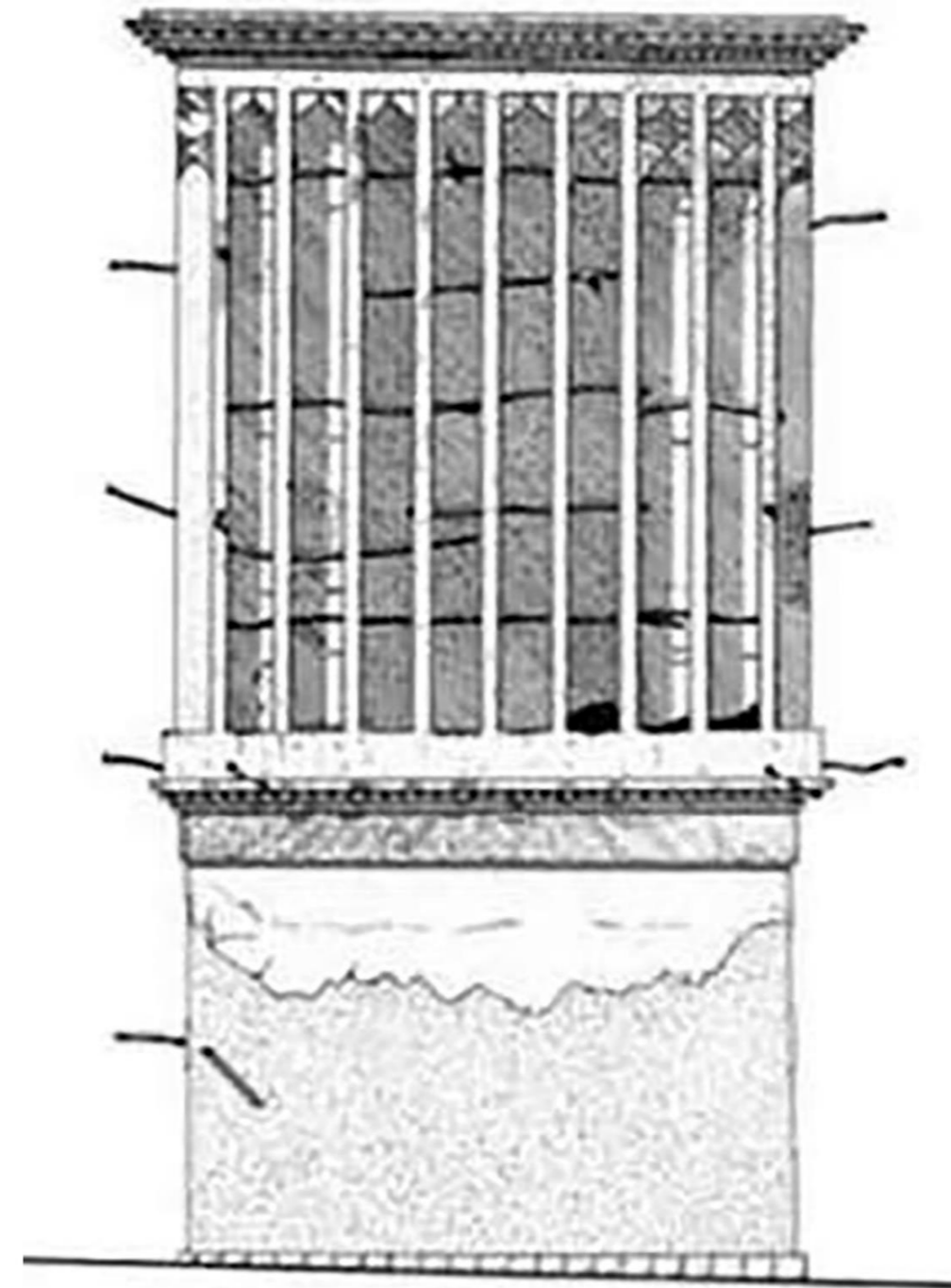
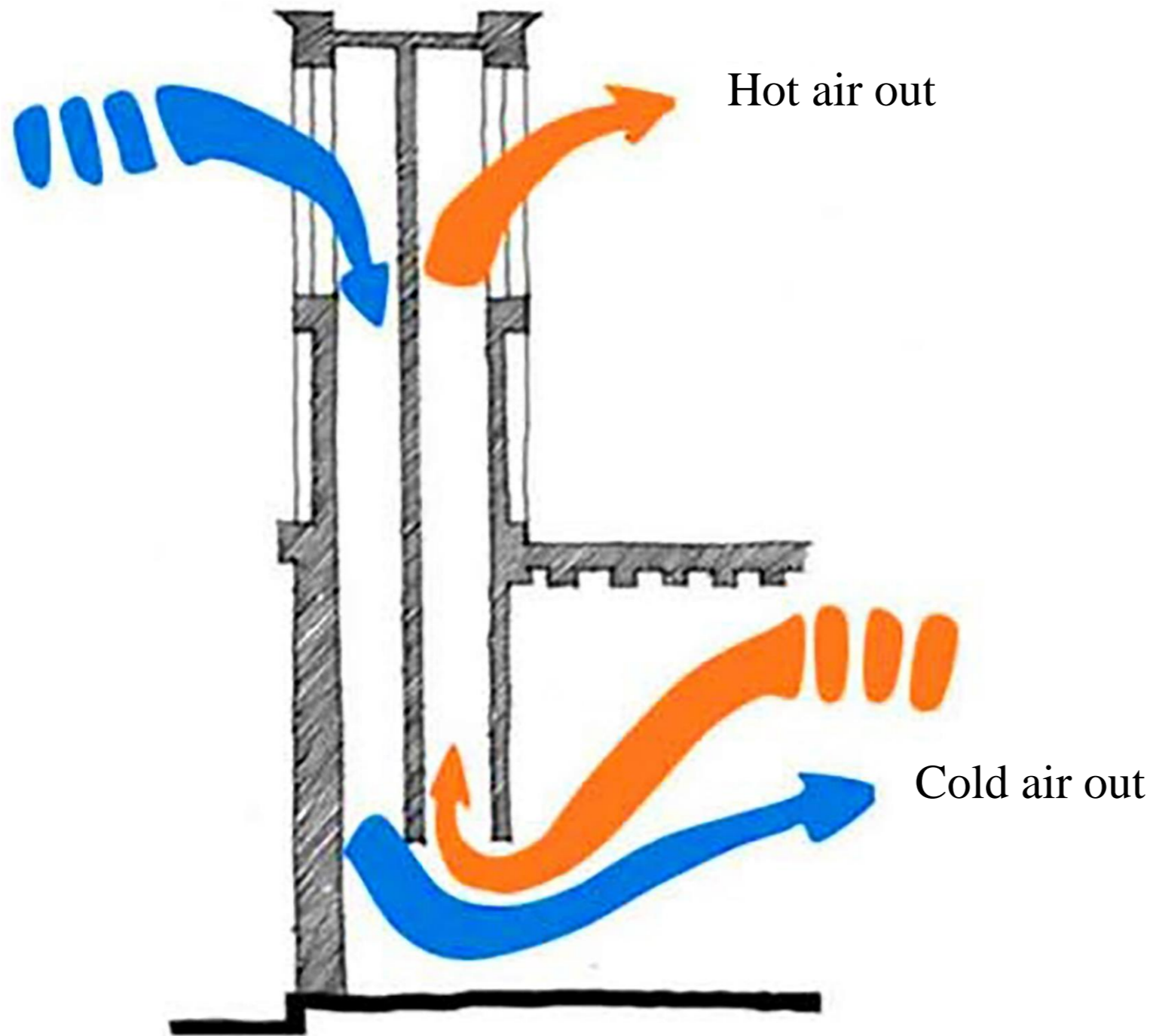


Section



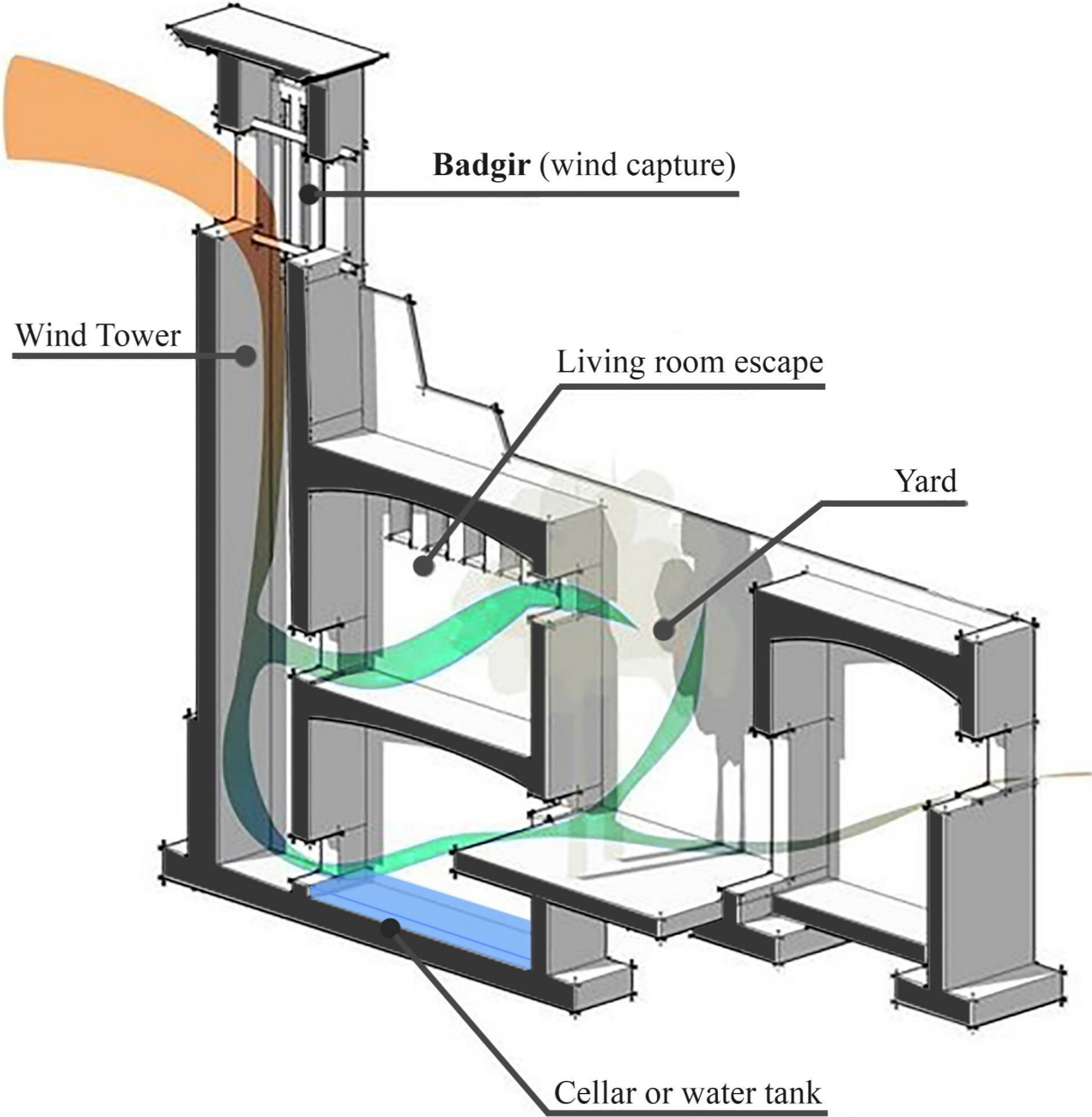
# Badgir (Diagram)

---





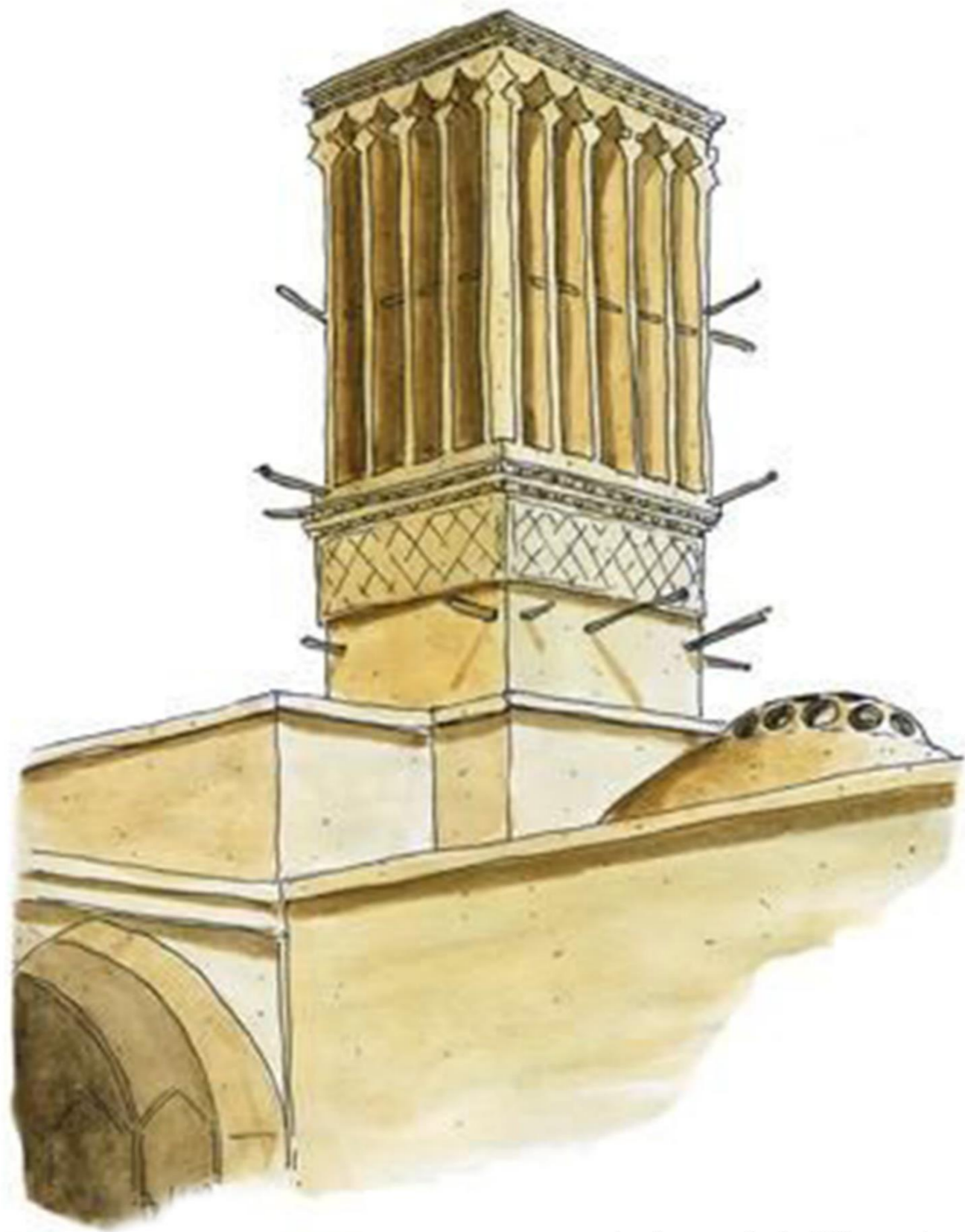
# Badgir (Dubai)



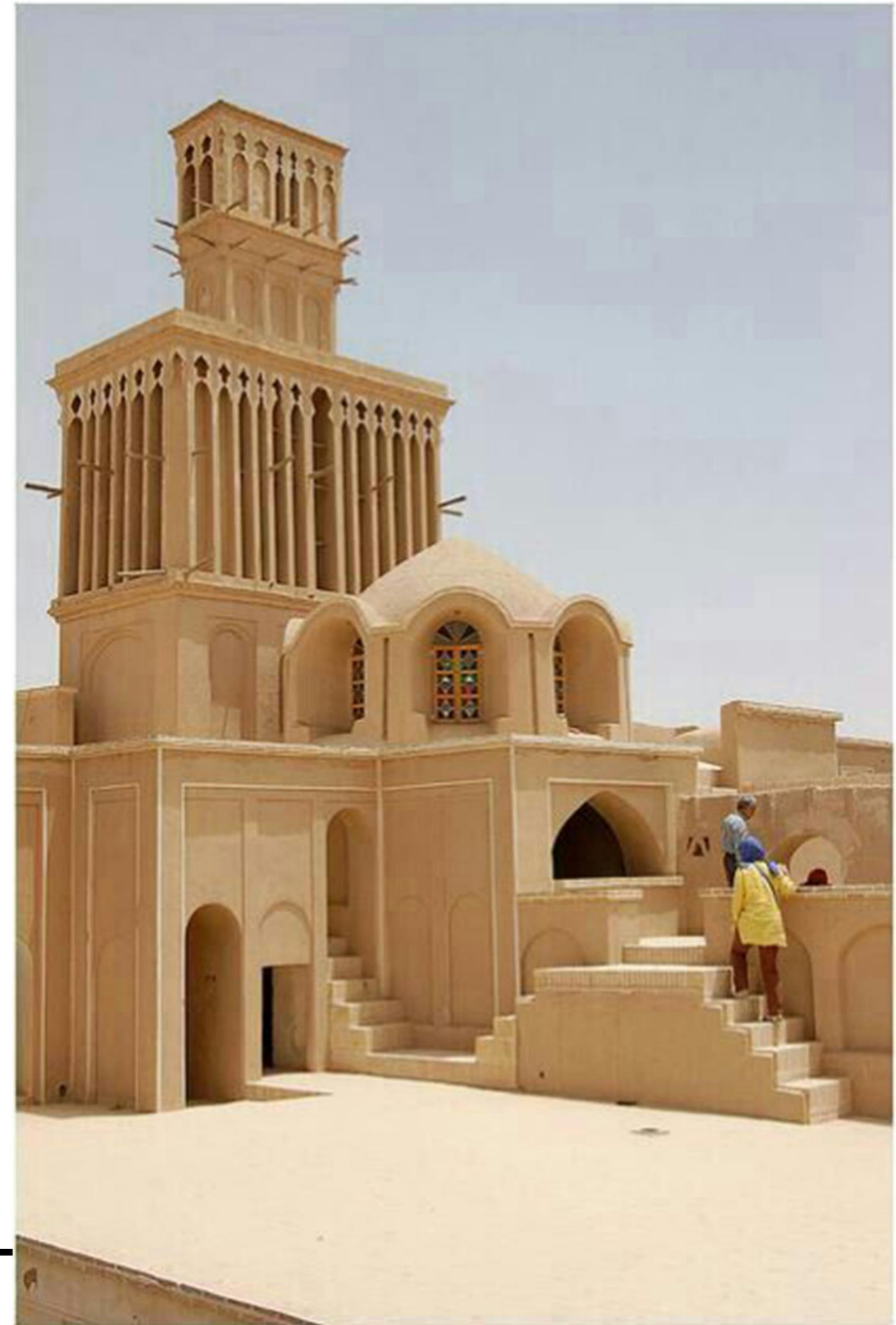


# Badgir (Yazd)

---



Aghazadeh Historical House





# Badgir (Yazd)

---



Bagh-e Dolat Abad, Yazd



Other examples of Badgir, Yazd

---

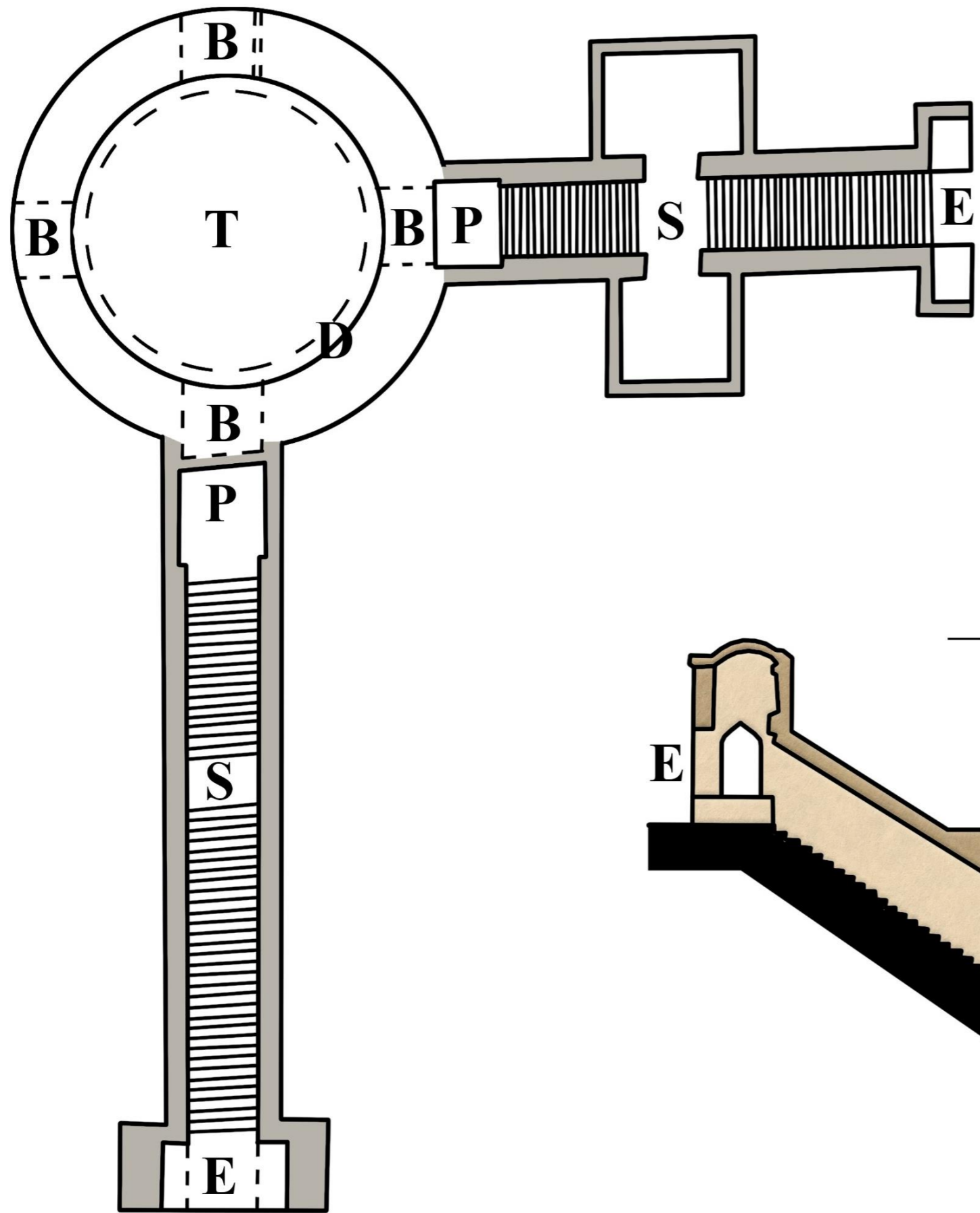


# Ab Anbar





# Ab Anbar



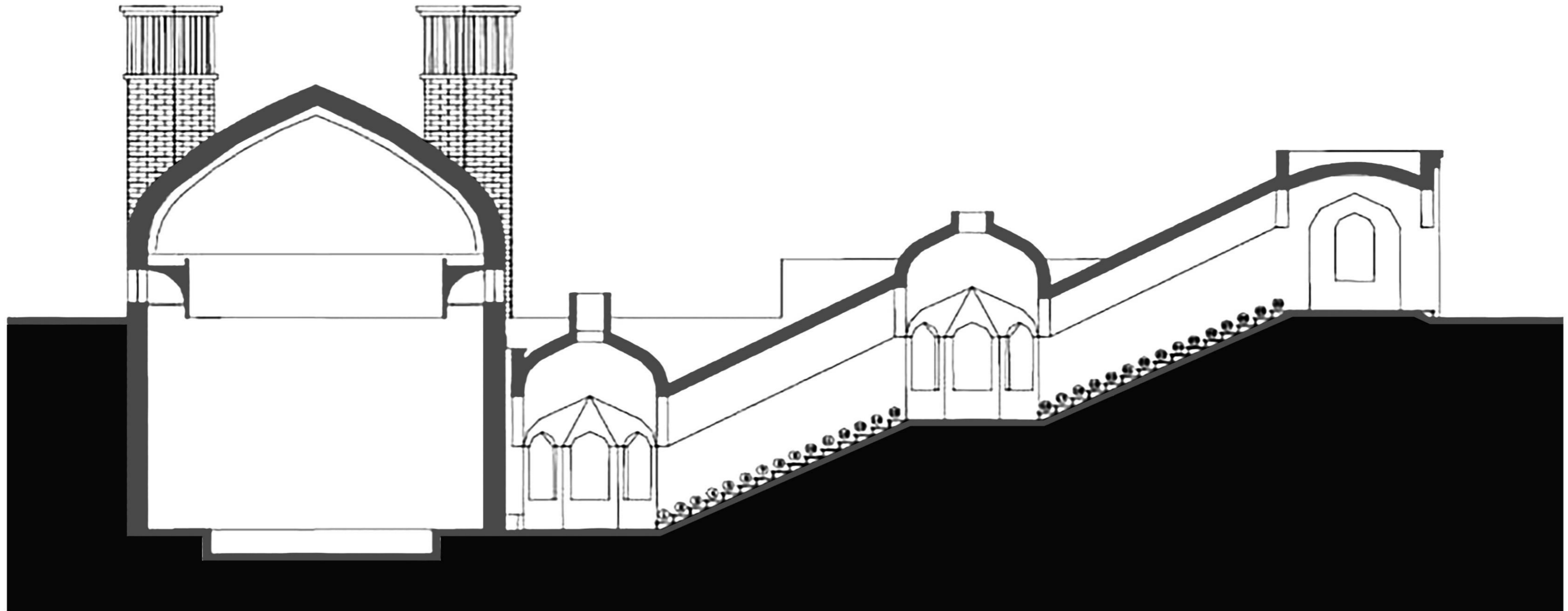
Plan

Section



# Ab Anbar A typical example of a Ab Anbar

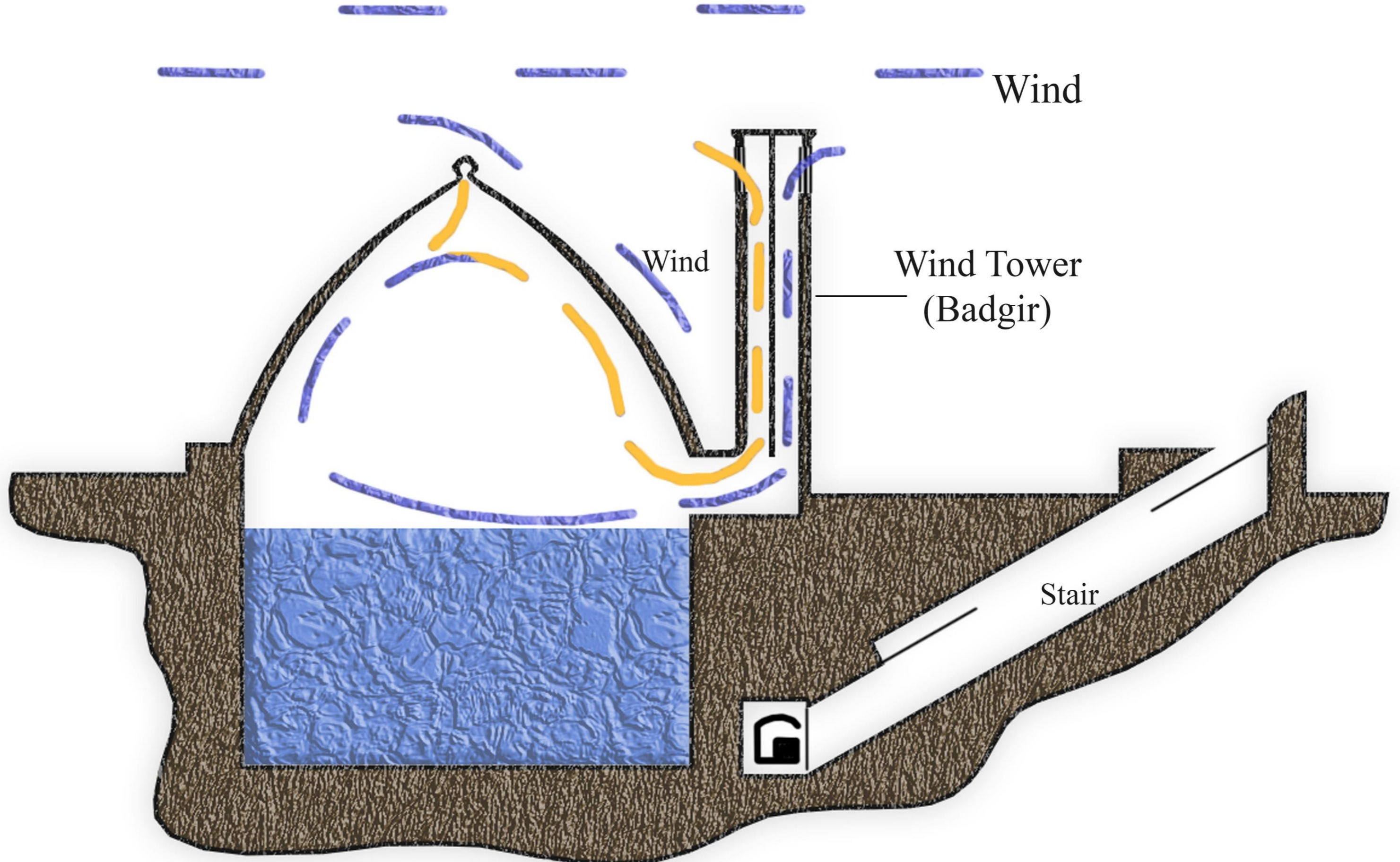
---



A typical example of a Ab Anbar

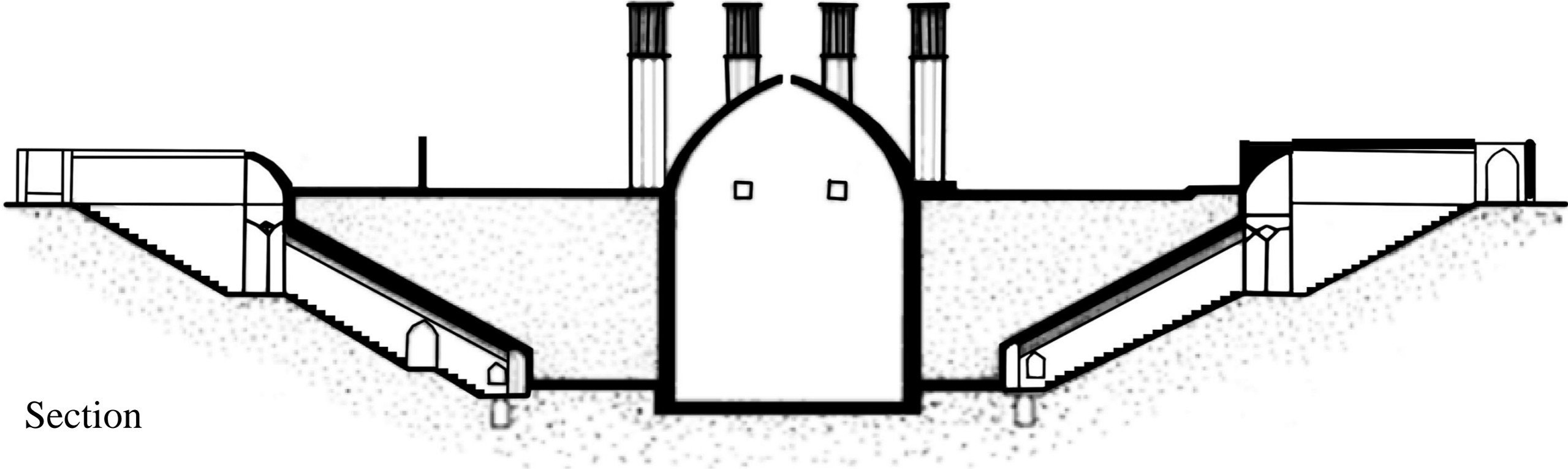
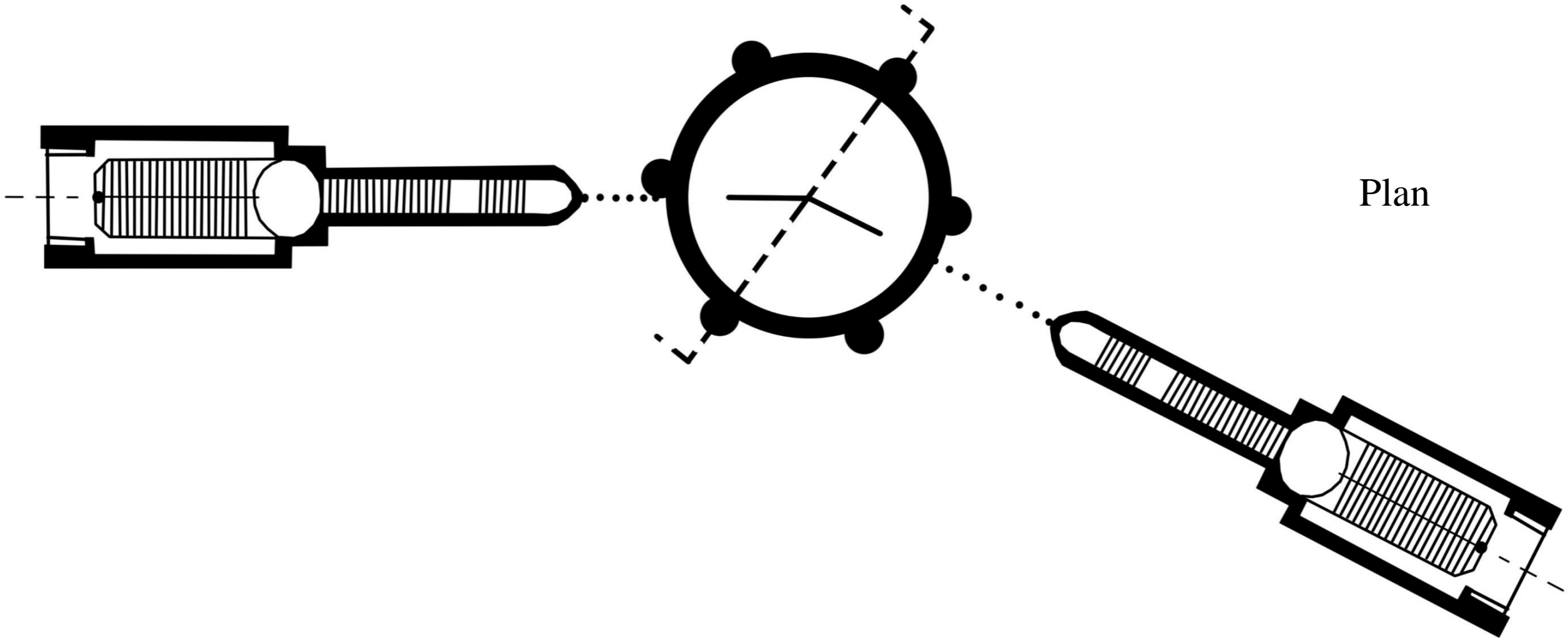


# Ab Anbar A typical example of a Ab Anbar





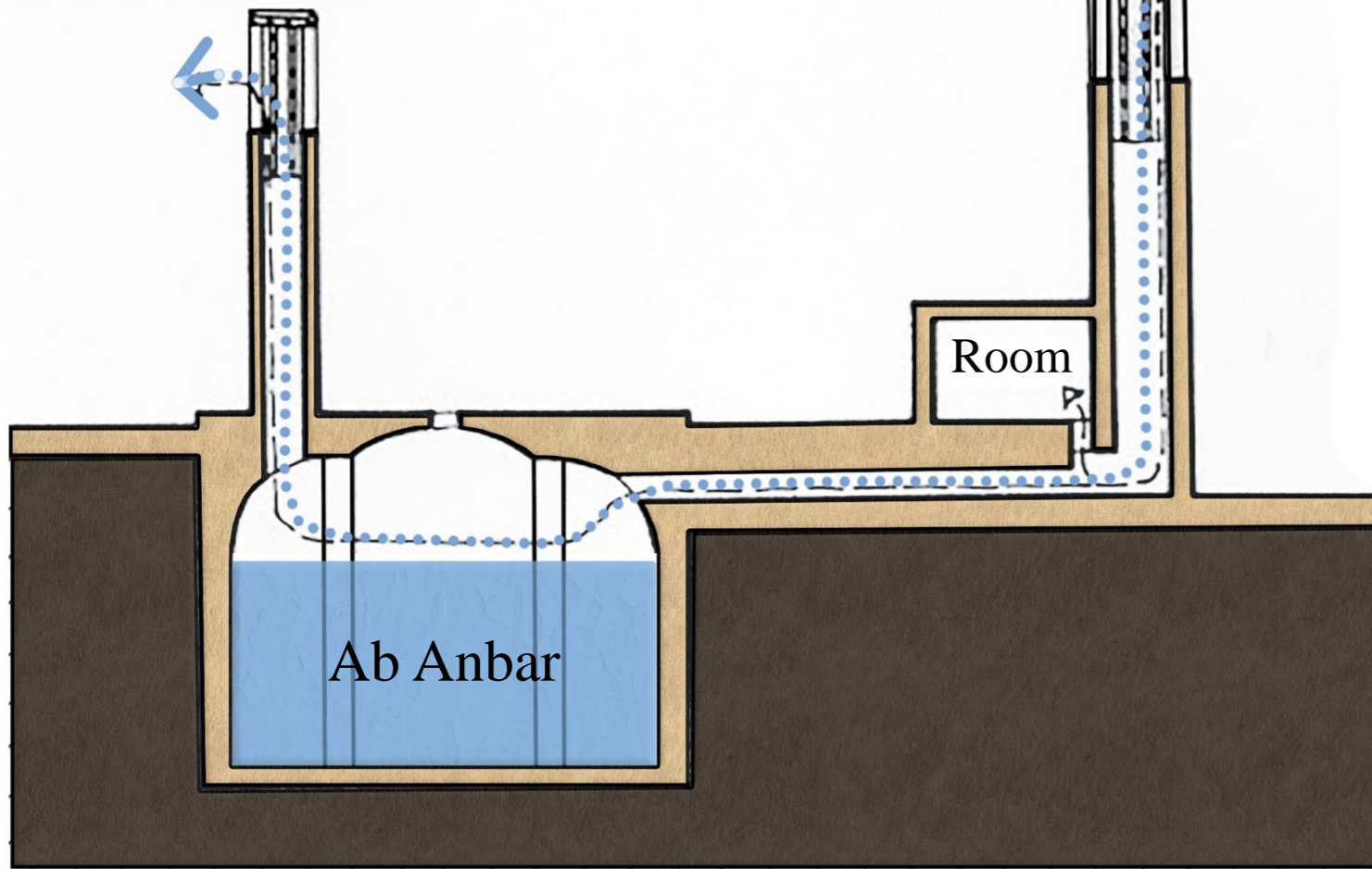
**Ab Anbar** (An example of a Two-way Ab Anbar)



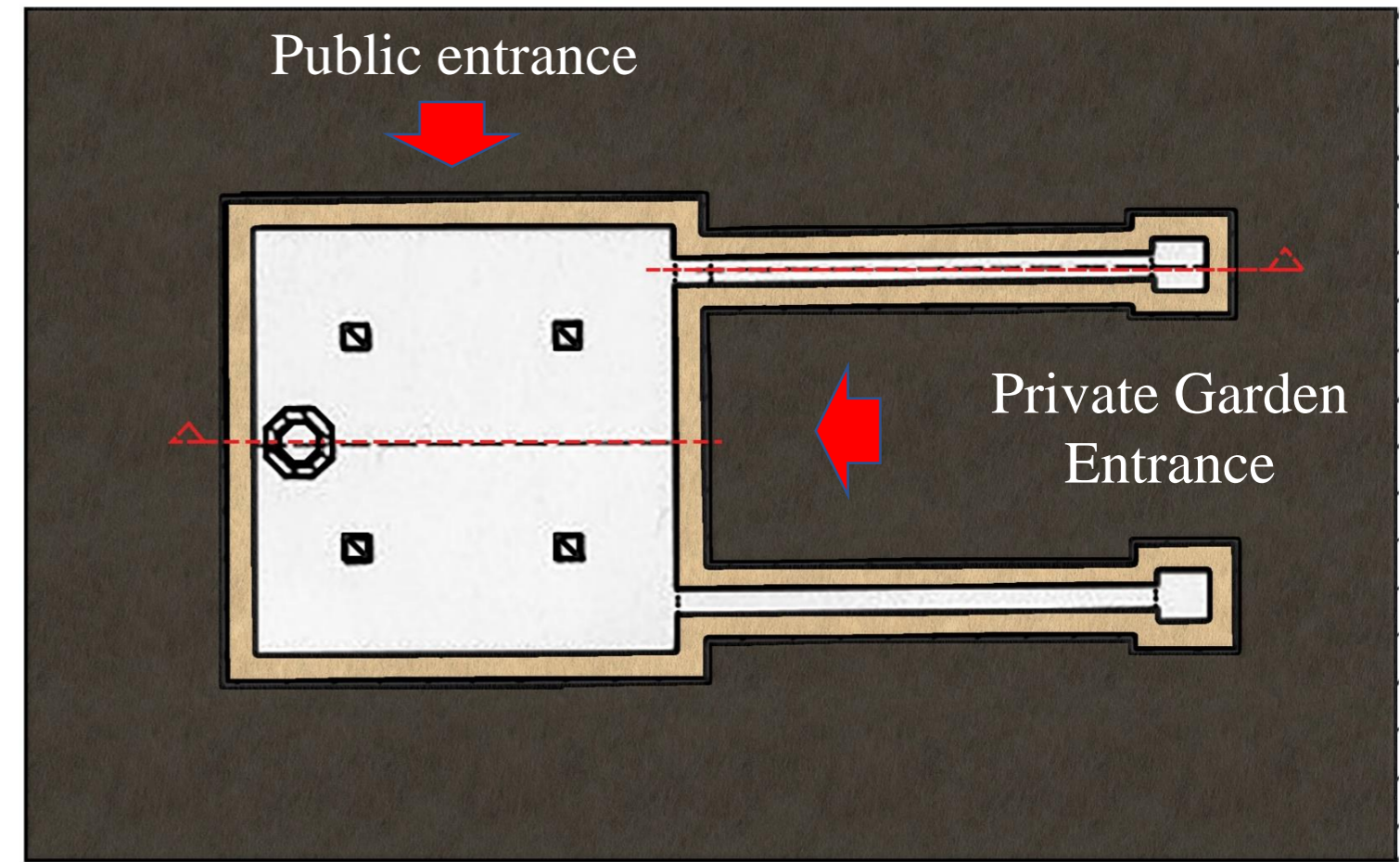


# Ab Anbar (Diagram)

Octagonal Wind Tower  
For Exhaust



Quadrangular Wind Tower  
For Air Intake





# Ab Anbar (6 Badgir, Yazd)





**Ab Anbar** (Twin Ab Anbar, Kish)



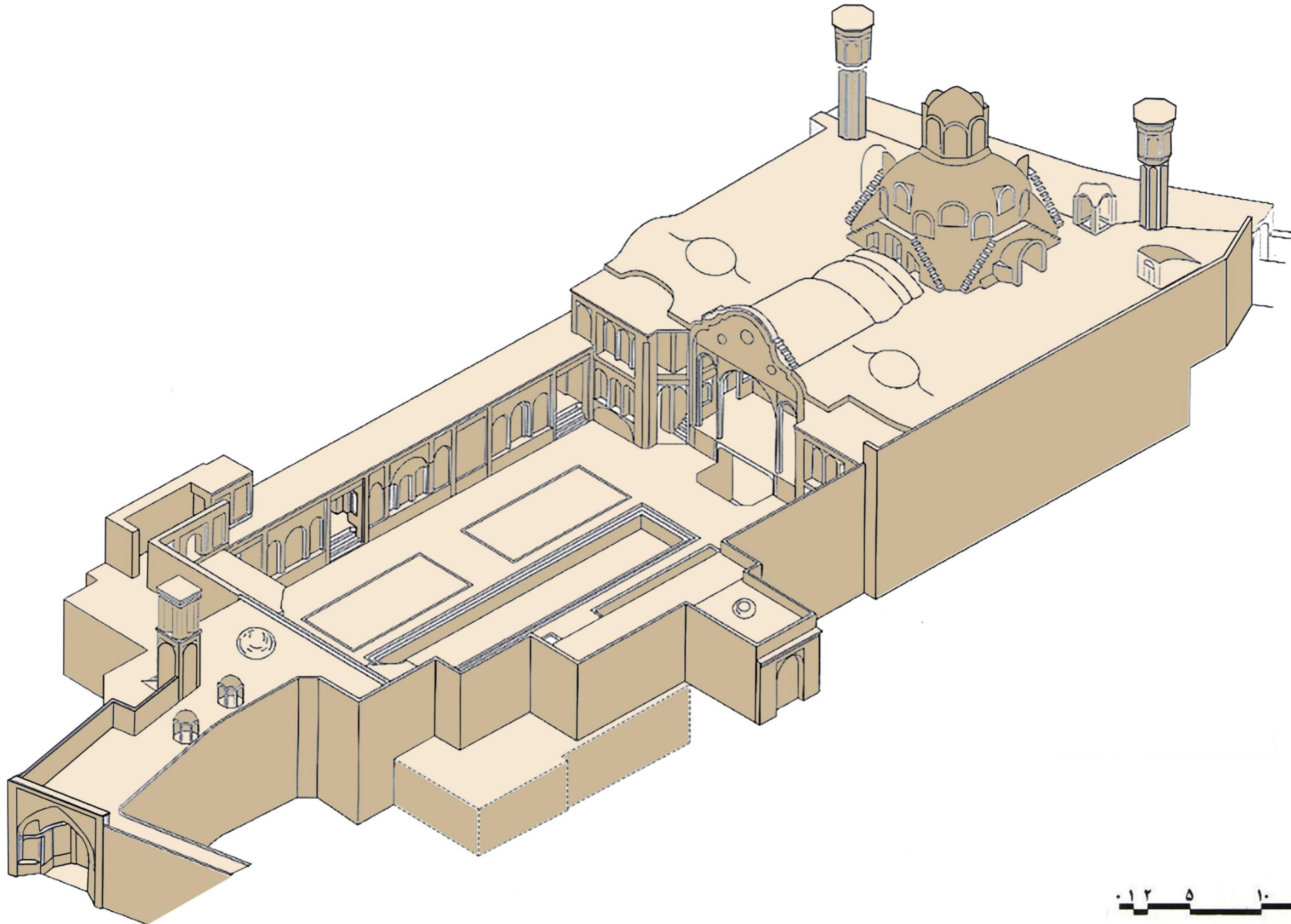


# Gonbad





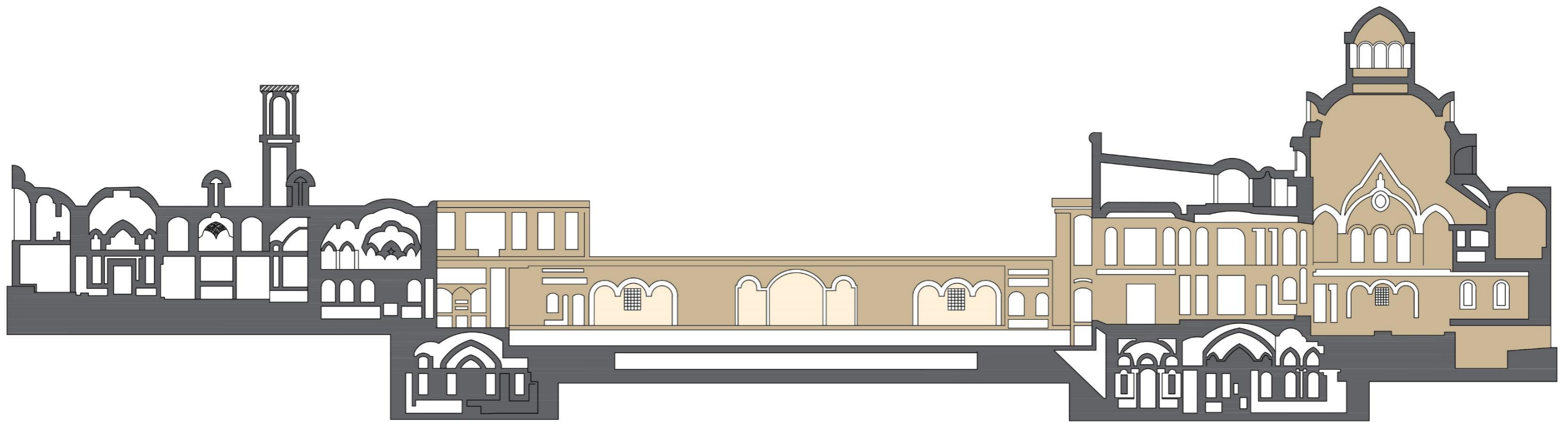
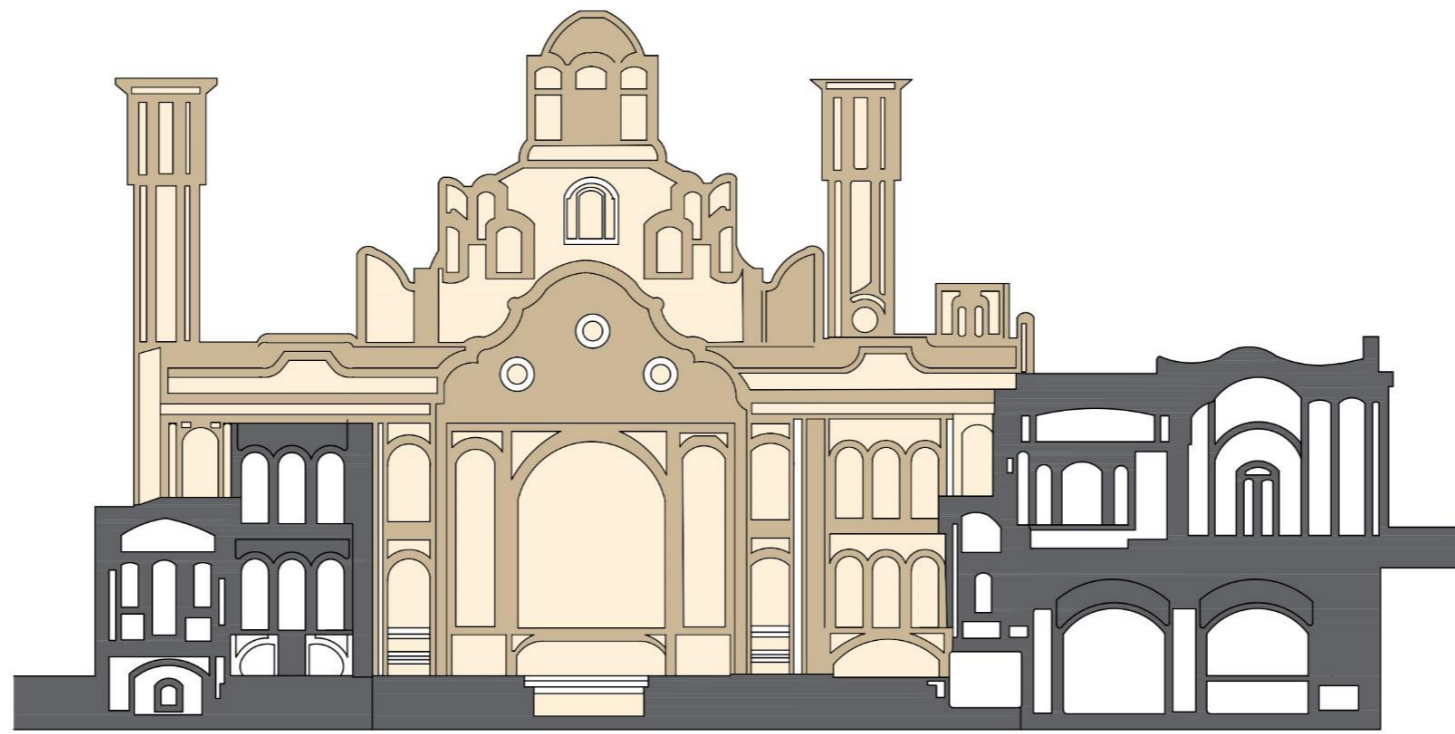
# Gonbad (Khane Borujerdiha)



0 1 2 5 10 20 m



# Gonbad (Khane Borujerdiha, Section)



0 1 2 3 4 5 6 7 8 9 10 m



# Gonbad (Khane Borujerdiha)



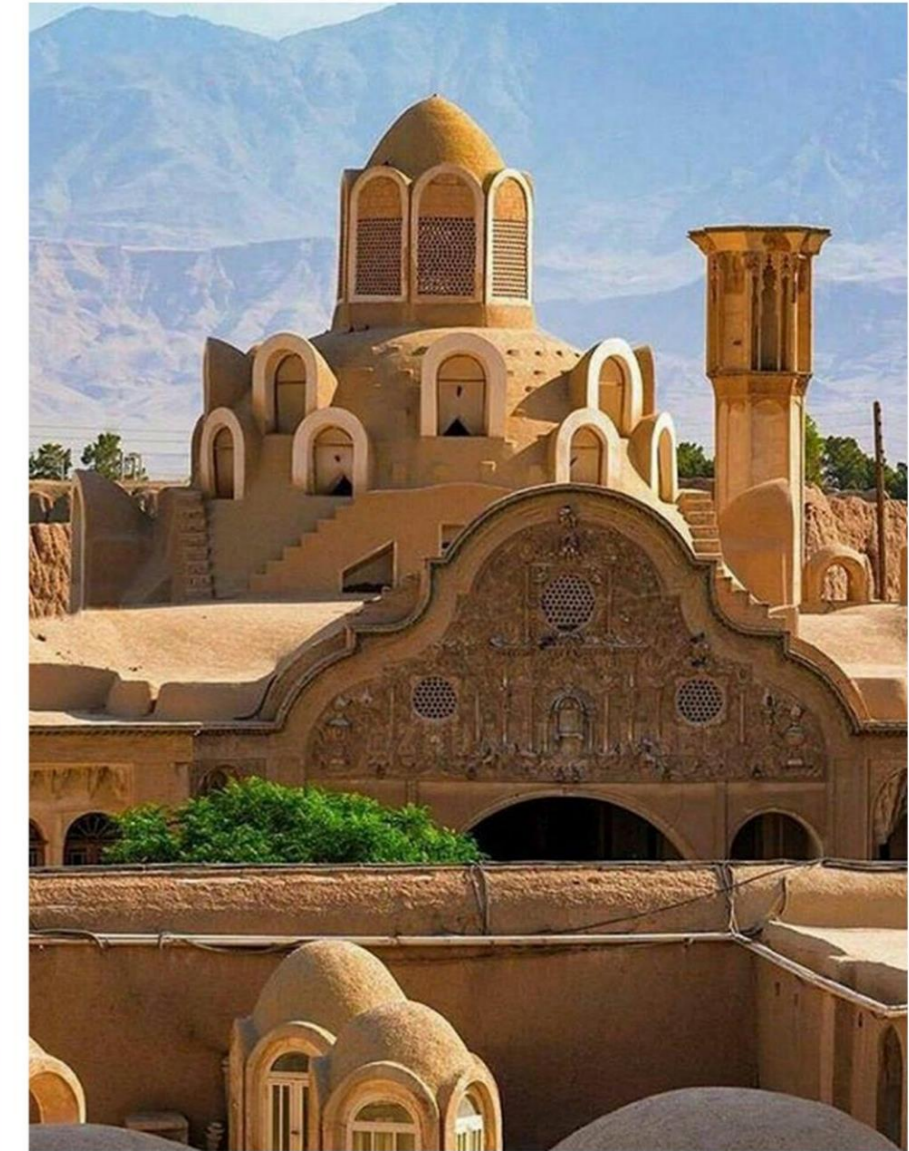


# Gonbad (Khane Borujerdiha)





# Gonbad (Khane Borujerdiha)

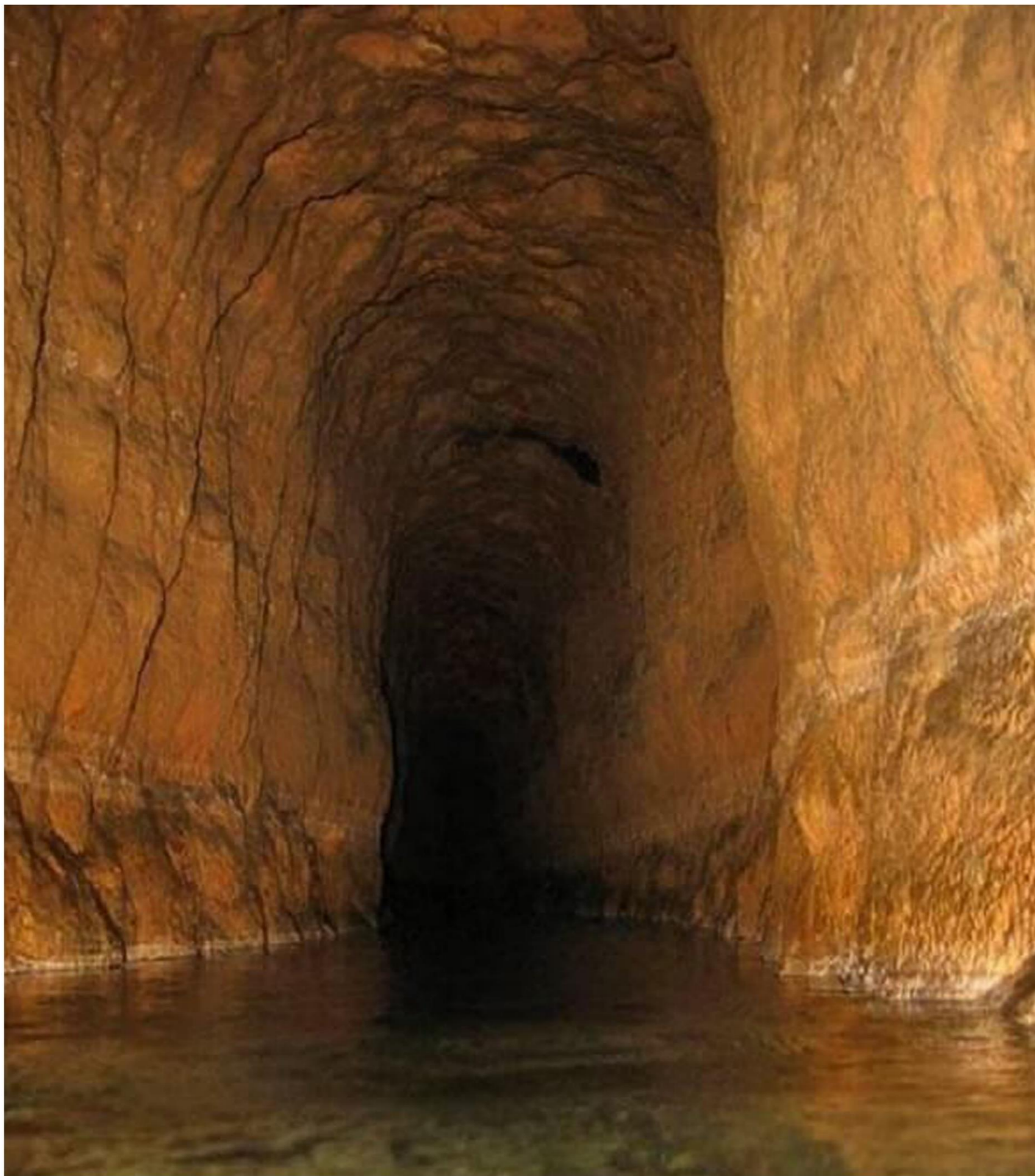




# Qanat



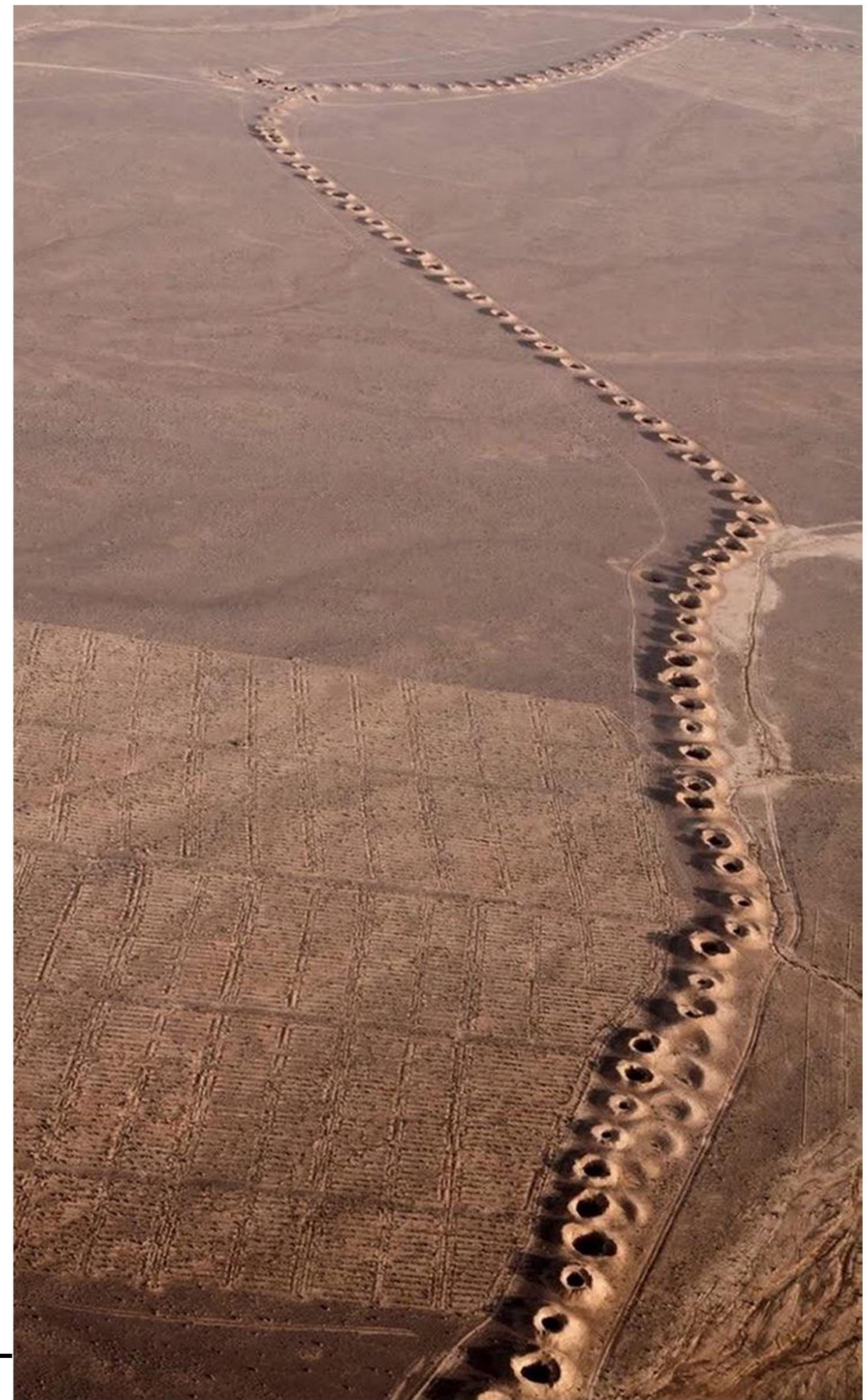




**Qanat**

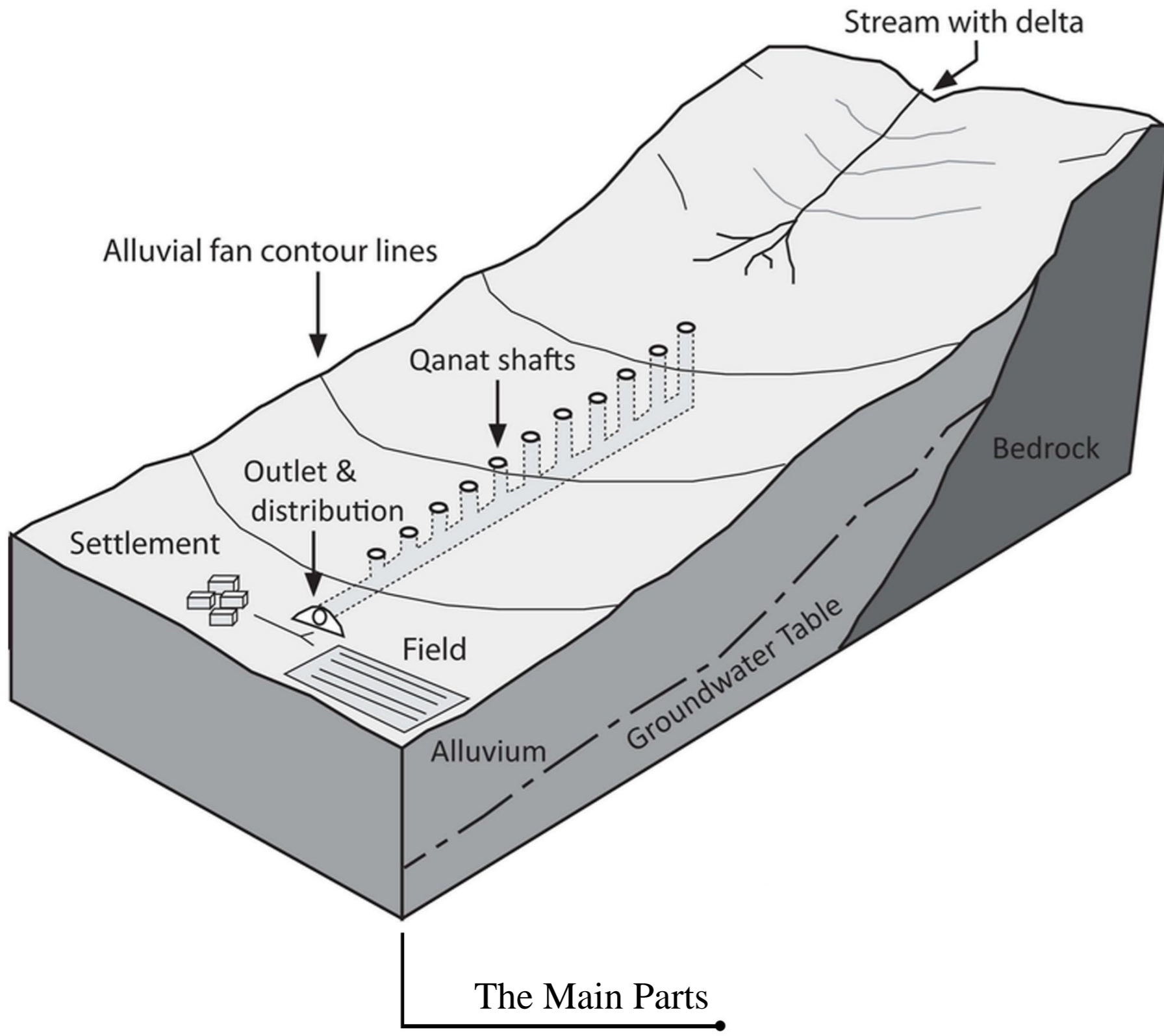
• Interior Vision

• Exterior Vision



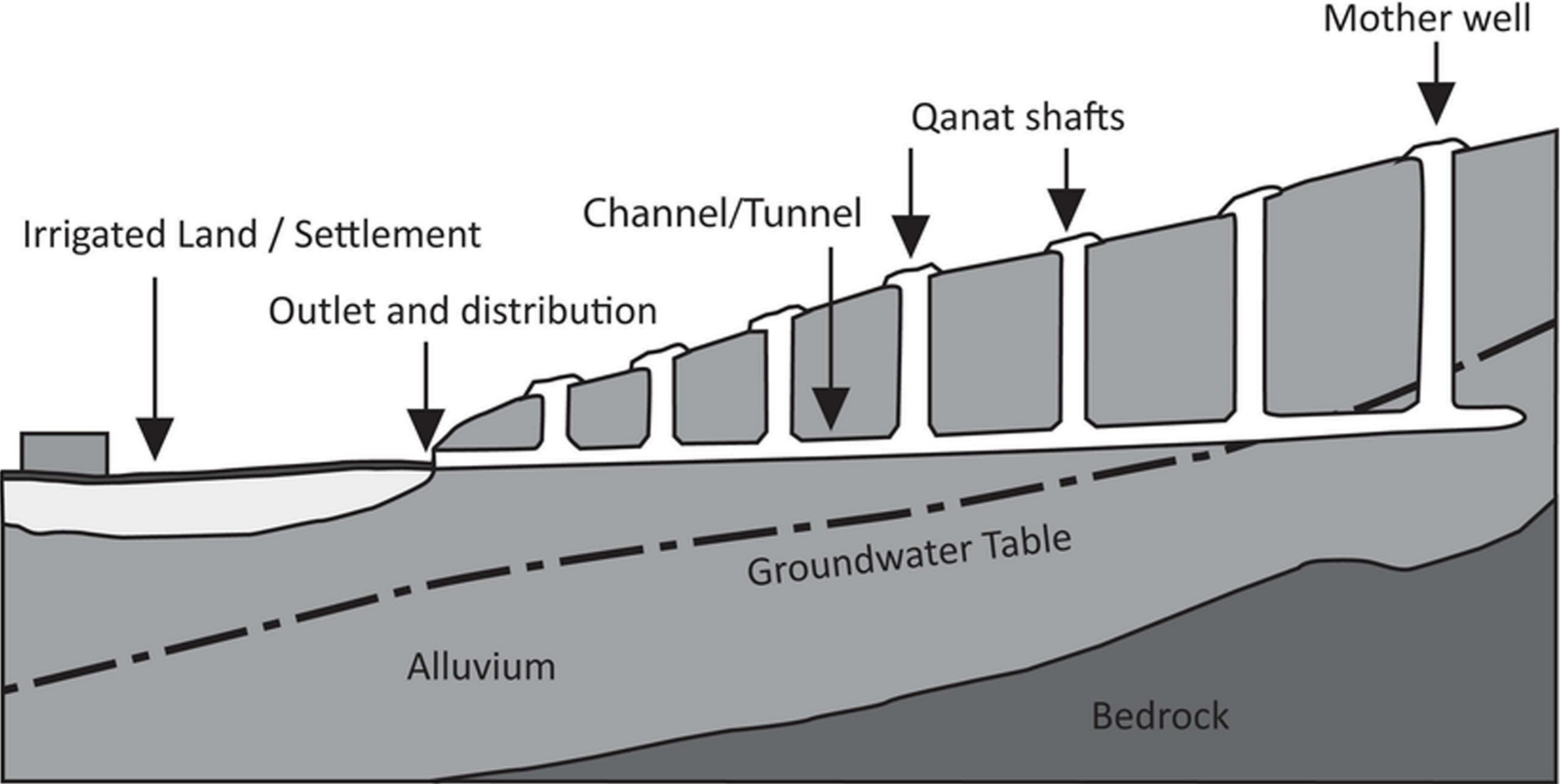


# Qanat



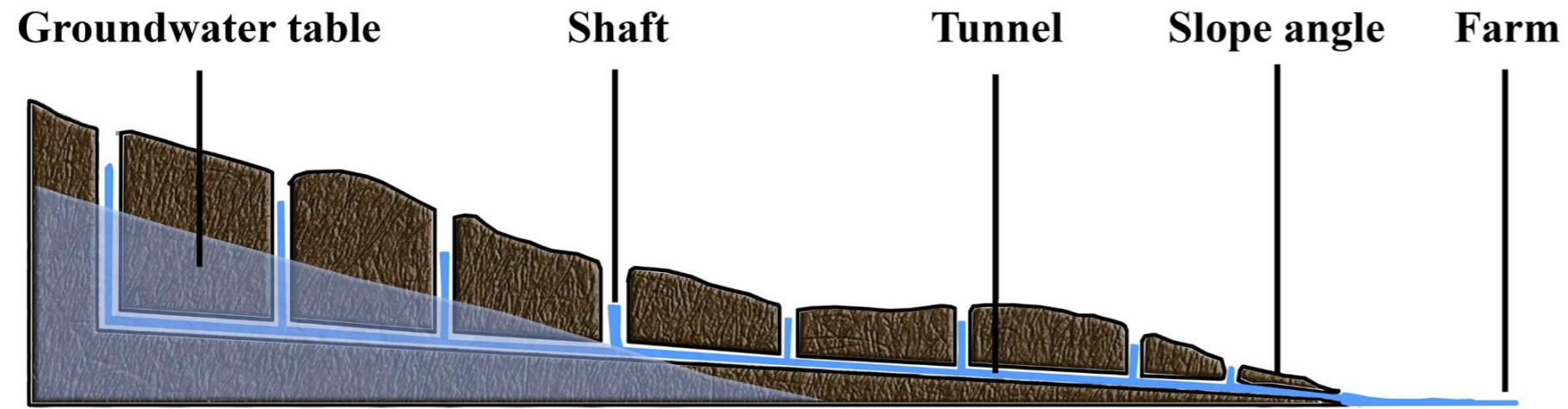


# Qanat (The Main Parts)

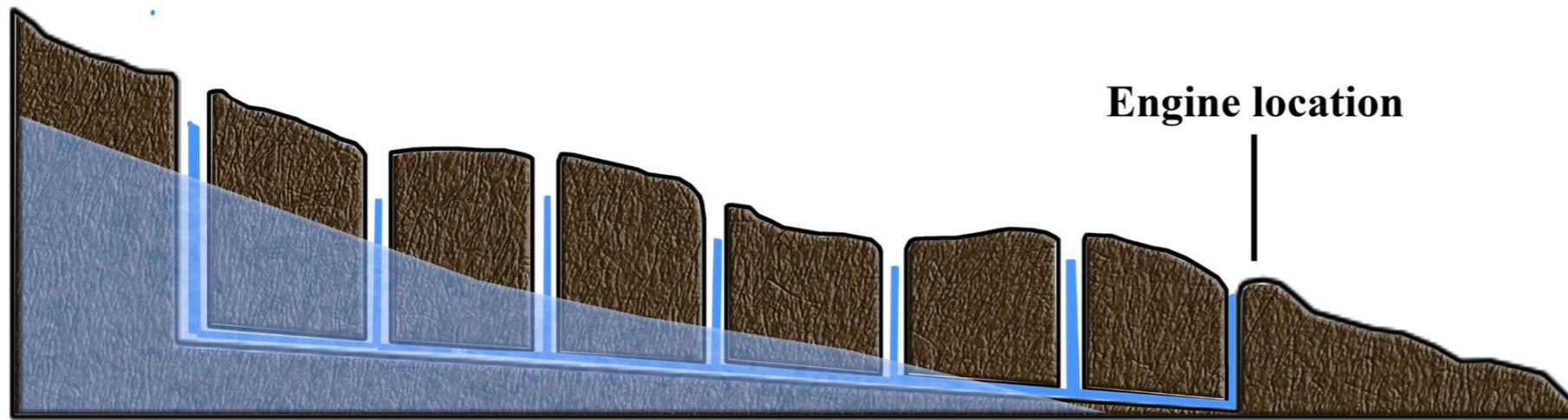




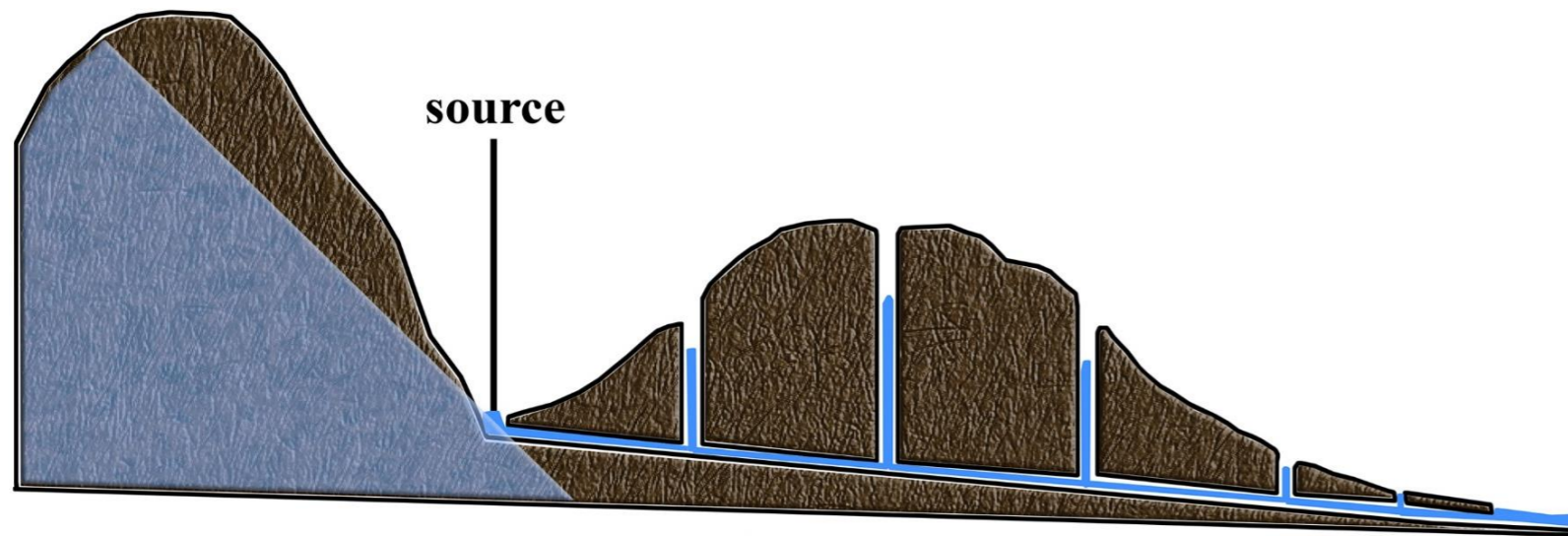
# Qanat (Diagram)



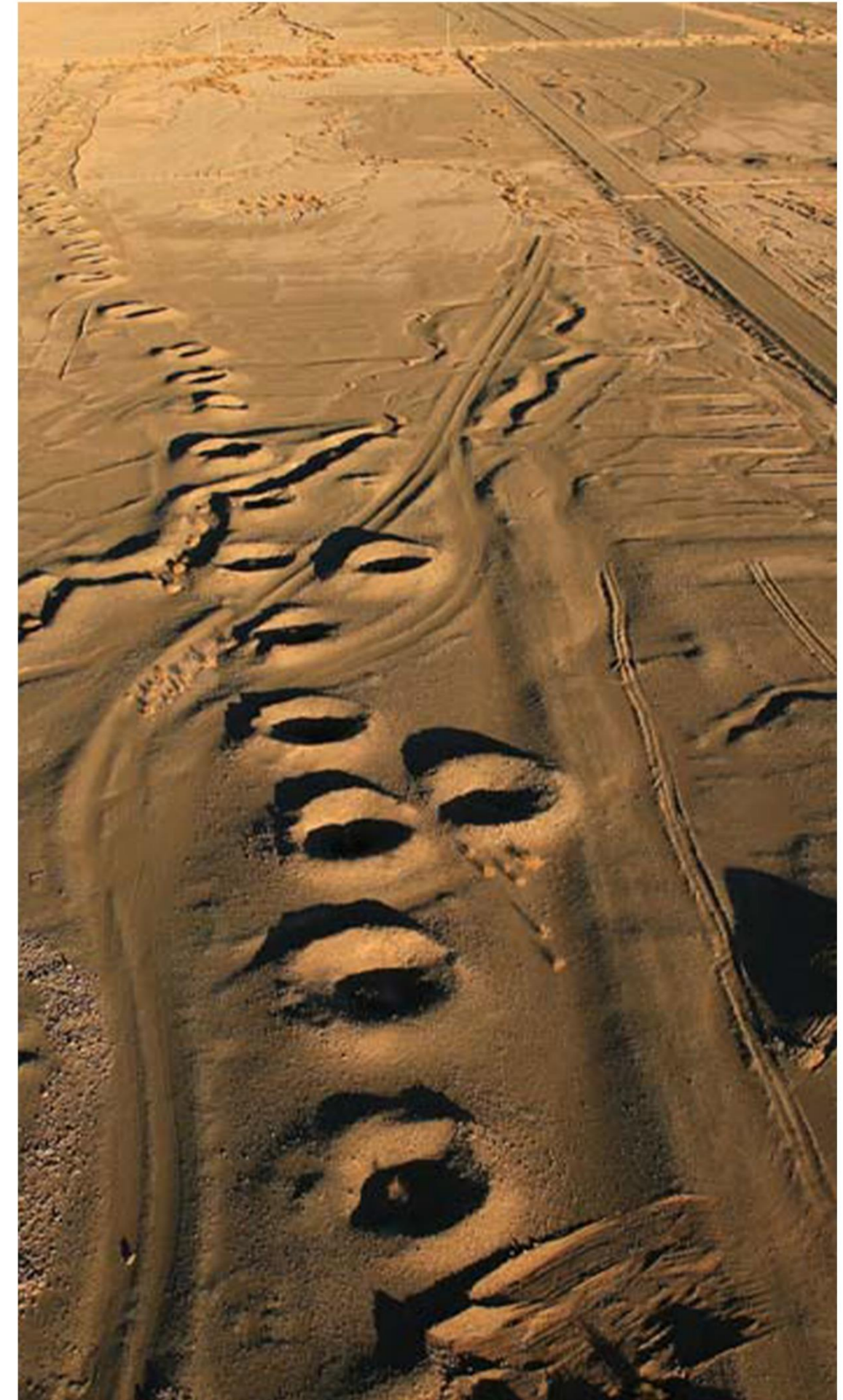
Qanats on the Plain



Motorized qanat



Qanat source



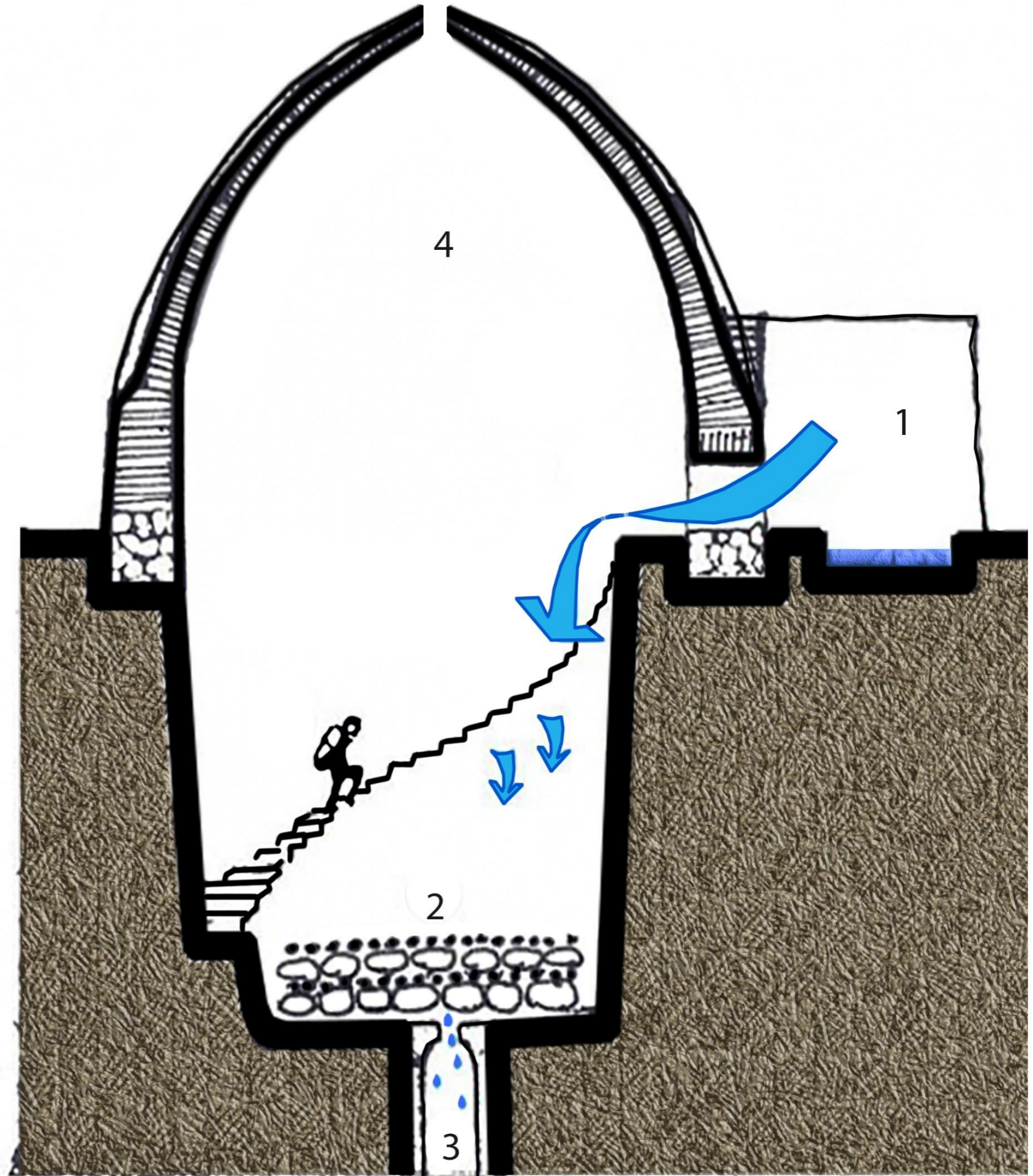


# Yakhchal



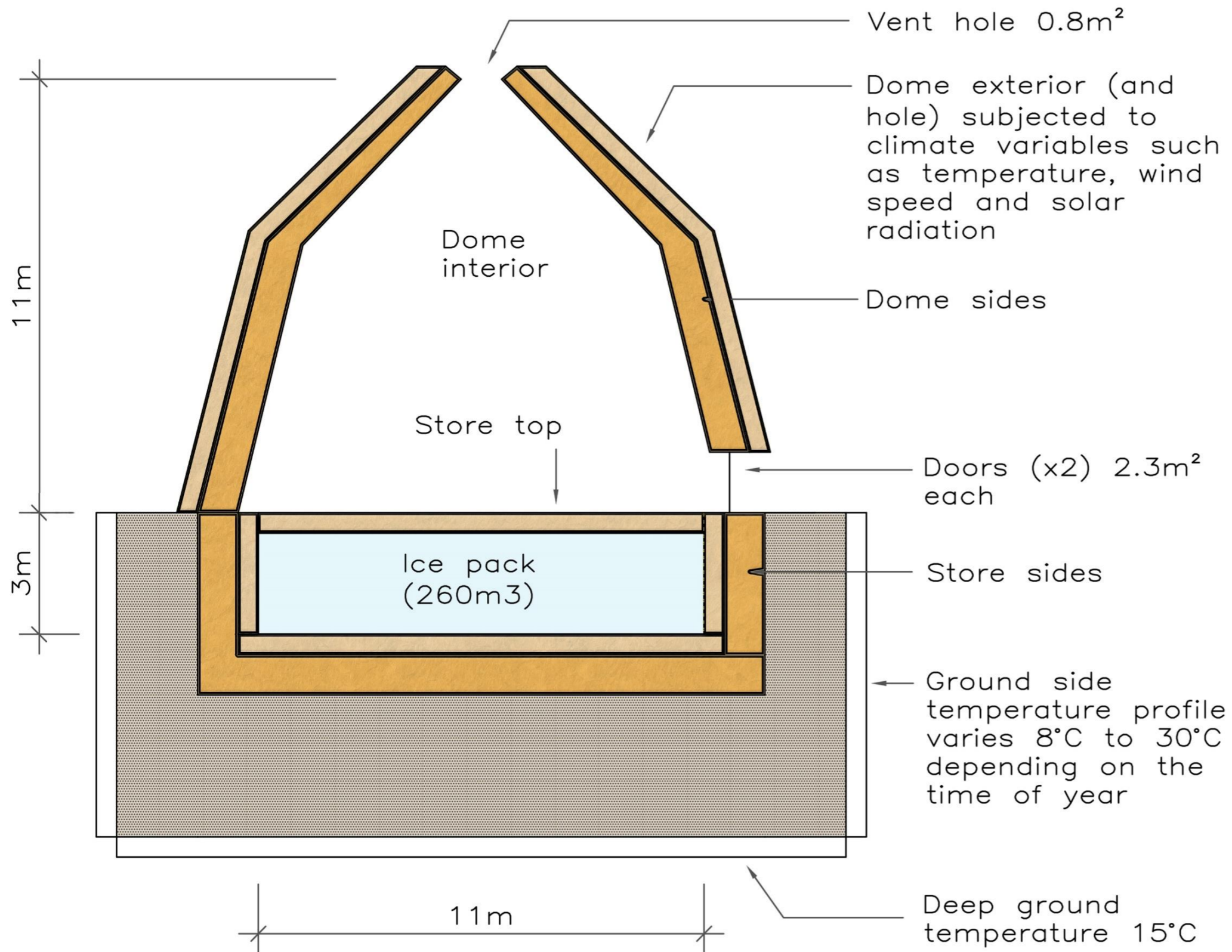


# Yakhchal








# Yakhchal



Materials Key

|   |                              |
|---|------------------------------|
|  | Adobe                        |
|  | Thatch (or other insulation) |
|  | Compacted soil               |