

**ESRI Northeast Africa**

Land Registry Authority for the  
Great Socialist People's Libyan Arab Jamahiriya


**Transformation  
of the  
Land Registration Service**

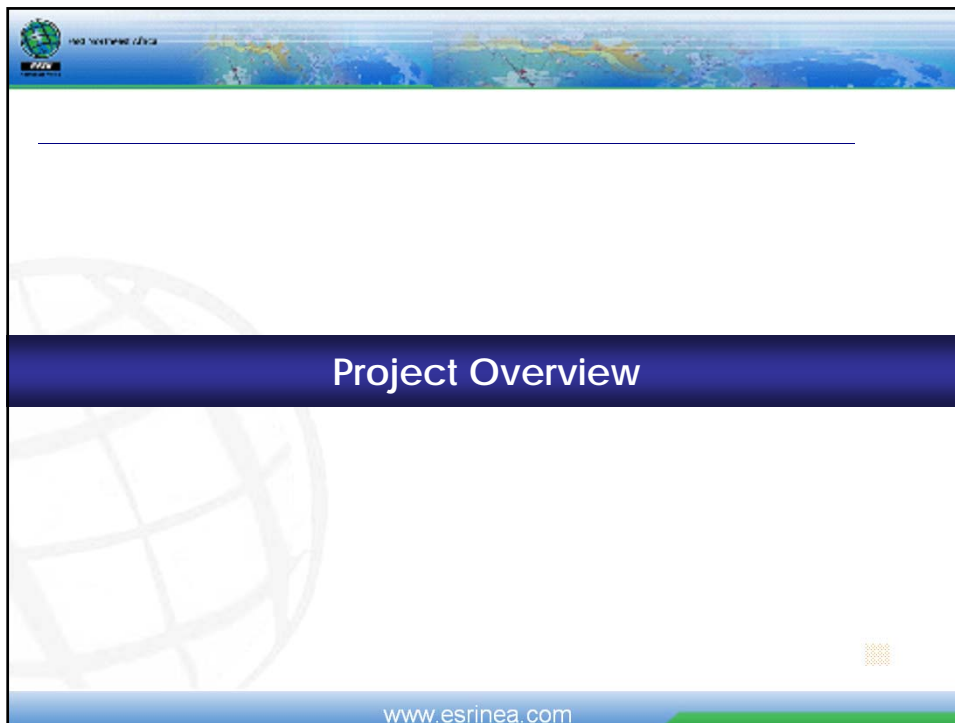


**Agenda**

- Project Overview
- Project Objectives
- Registration Service Re-Engineering
- System Overview

[www.esrinea.com](http://www.esrinea.com)



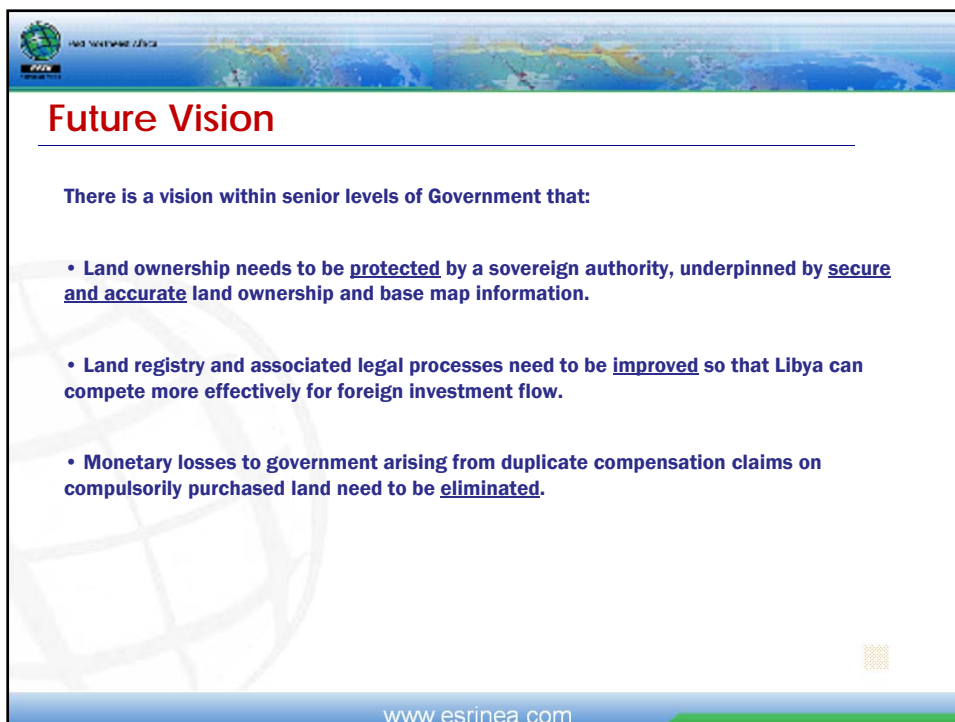


Red Sea Economic Zone

---

## Project Overview

www.esrinea.com



Red Sea Economic Zone

---

## Future Vision

There is a vision within senior levels of Government that:

- Land ownership needs to be protected by a sovereign authority, underpinned by secure and accurate land ownership and base map information.
- Land registry and associated legal processes need to be improved so that Libya can compete more effectively for foreign investment flow.
- Monetary losses to government arising from duplicate compensation claims on compulsorily purchased land need to be eliminated.

www.esrinea.com




## The Future Land Registry Office

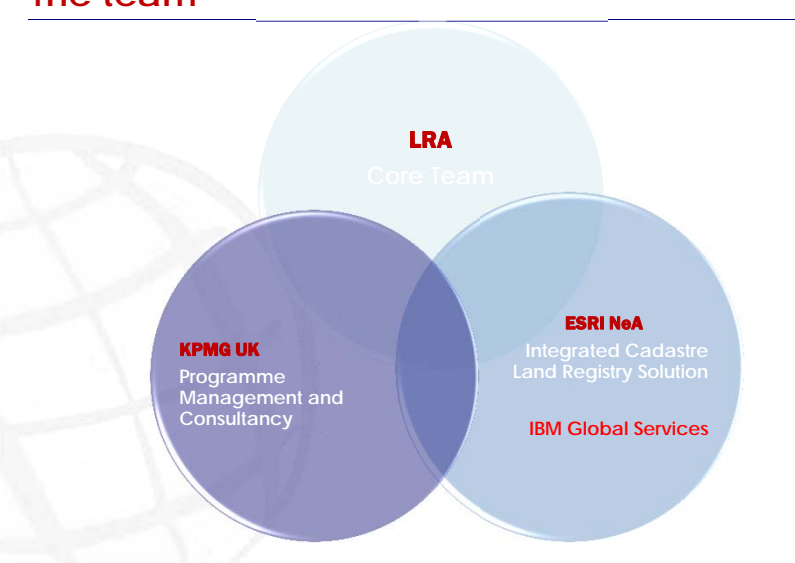
The future Land Registry therefore needs to be able to:

- Provide a countrywide secure, accurate database of land ownership
- Have the ability to share land ownership information with other government agencies and departments
- Use the latest available 'proven' technology enabling a fast response to land registry enquiries
- Safe and secure archive and retrieval facilities
- Provide its employees with a good working environment, training and career development
- Provide the citizen with an efficient service and good customer experience
- Accurately resolve land ownership disputes

[www.esrinea.com](http://www.esrinea.com)



## The team




**LRA**  
Core Team

**KPMG UK**  
Programme Management and Consultancy

**ESRI NoA**  
Integrated Cadastre Land Registry Solution

**IBM Global Services**

[www.esrinea.com](http://www.esrinea.com)




Red Sea East Africa  
ESRINEA

## Project Objectives

- Implementation of new working practices within the LRA (design and implementation of new business processes).
- Design, development and implementation of a pilot Land Registry system to meet the needs of this government agency
- Securing the existing mapping data and hard copy archive material to prevent further deterioration
- Full rollout and handover of a solution following acceptance of the pilot system
- Training and development of LRA employees to ensure that they are able to carry out their roles in an appropriate way

www.esrinea.com



Red Sea East Africa  
ESRINEA

---

## Data Conversion

www.esrinea.com

Red Sea and Gulf of Aden

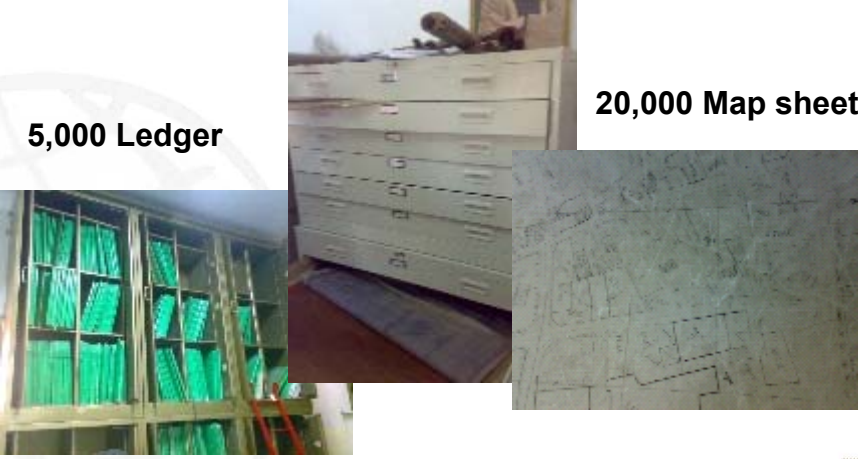
## The data set

5,000 Ledger

20,000 Map sheet

1,255,000 files

www.esrinea.com



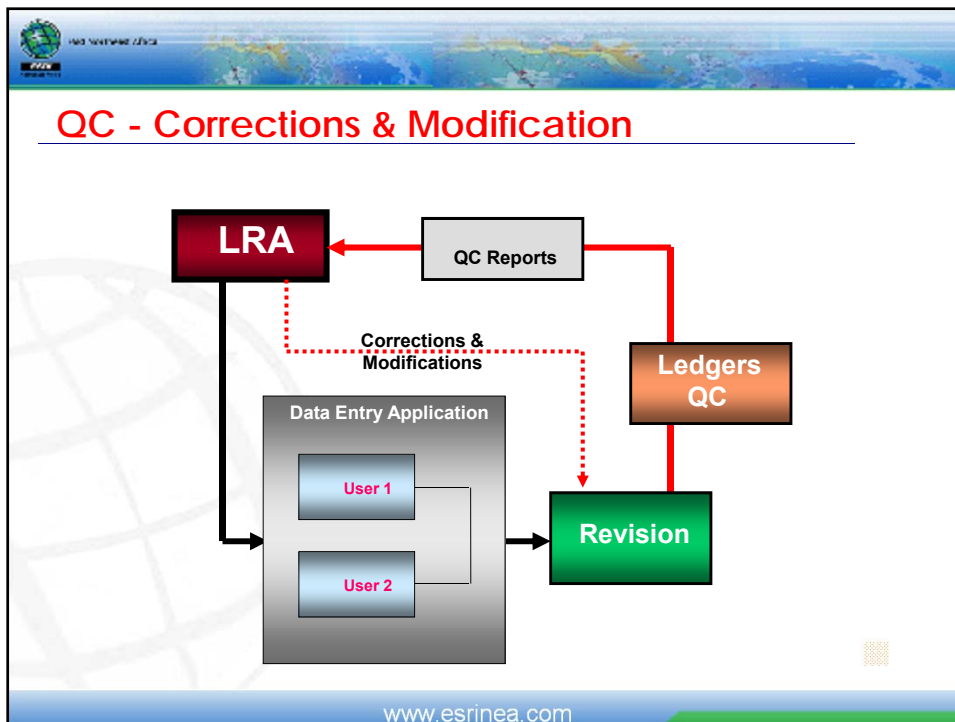
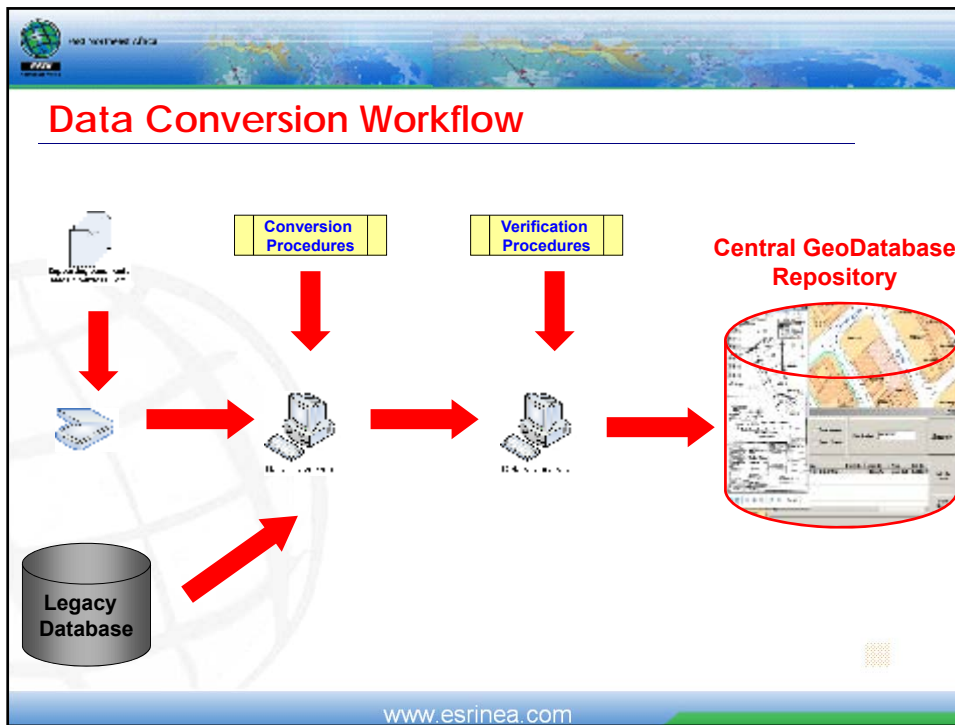
Red Sea and Gulf of Aden

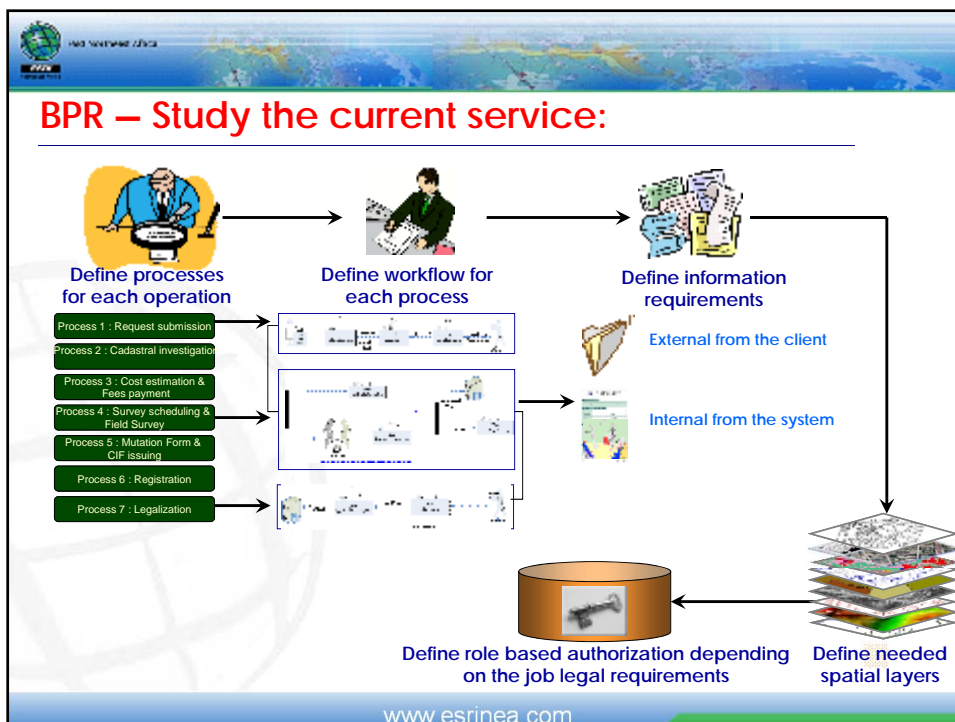
## Central Data Conversion Center

- Establishment of central data conversion center in Tripoli
- Data sets are shipped from regional offices to the center on daily basis
- Joint team from LRA and ESRI NeA.
- Continuous knowledge transfer and capacity building


www.esrinea.com












## Service Re-Engineering Objectives:

- Follow the operational aspect of the service
- Eliminate bottlenecks within the service flow
- Standardize the service inputs and outputs
- Improve the working environment for better service
- Unify internal and external communication channels
- Apply the global cadastre standard
- Build the required infrastructure (IT, Operation, Construction...)
- Build the required capacities

[www.esrinea.com](http://www.esrinea.com)

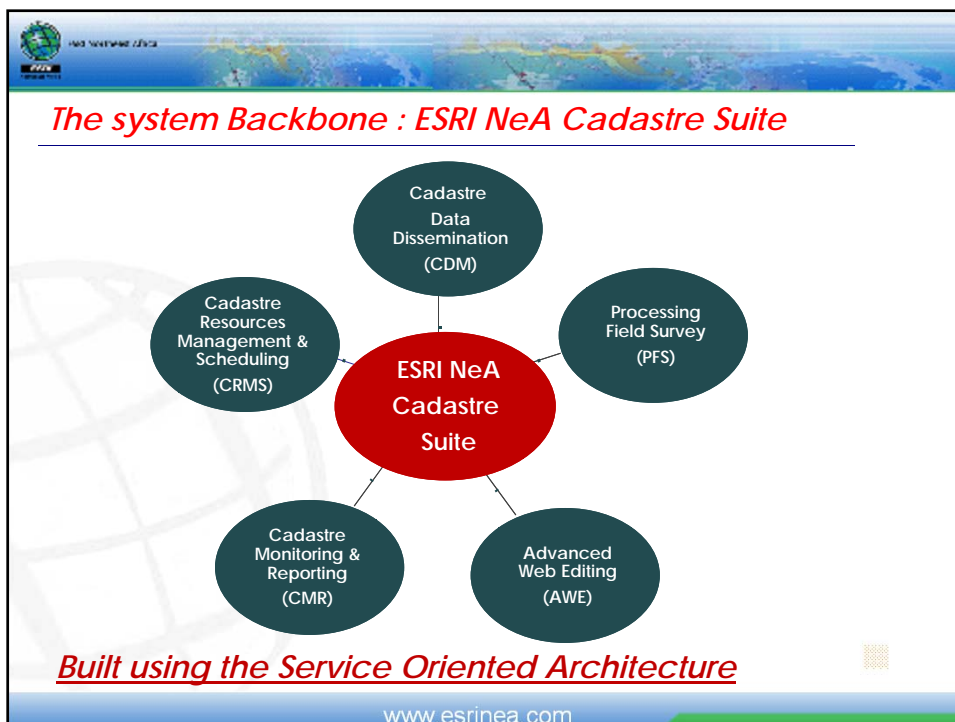
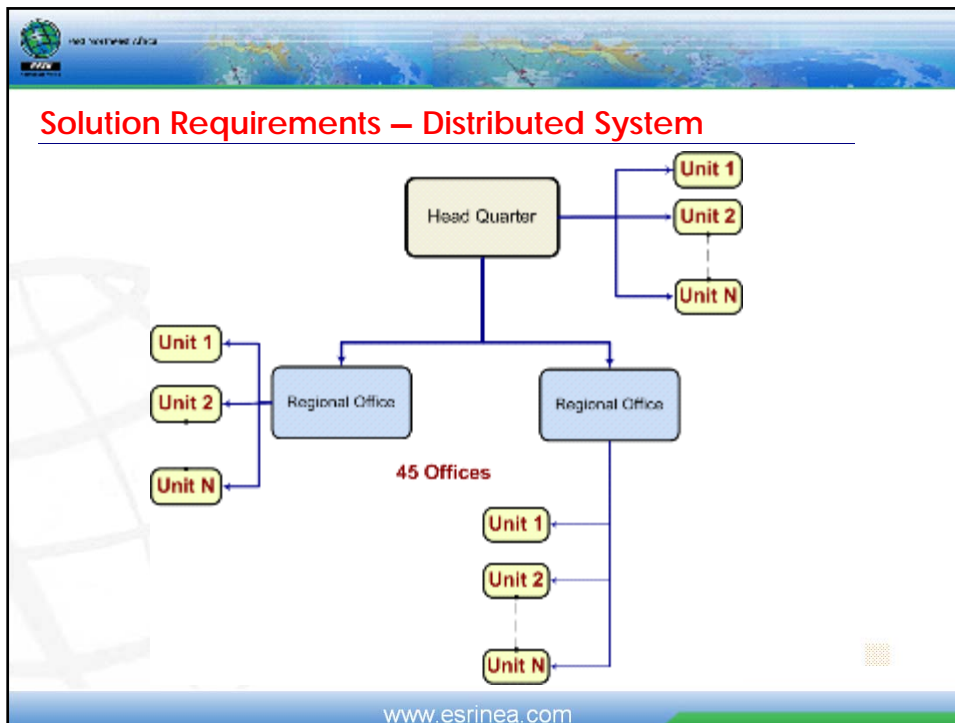


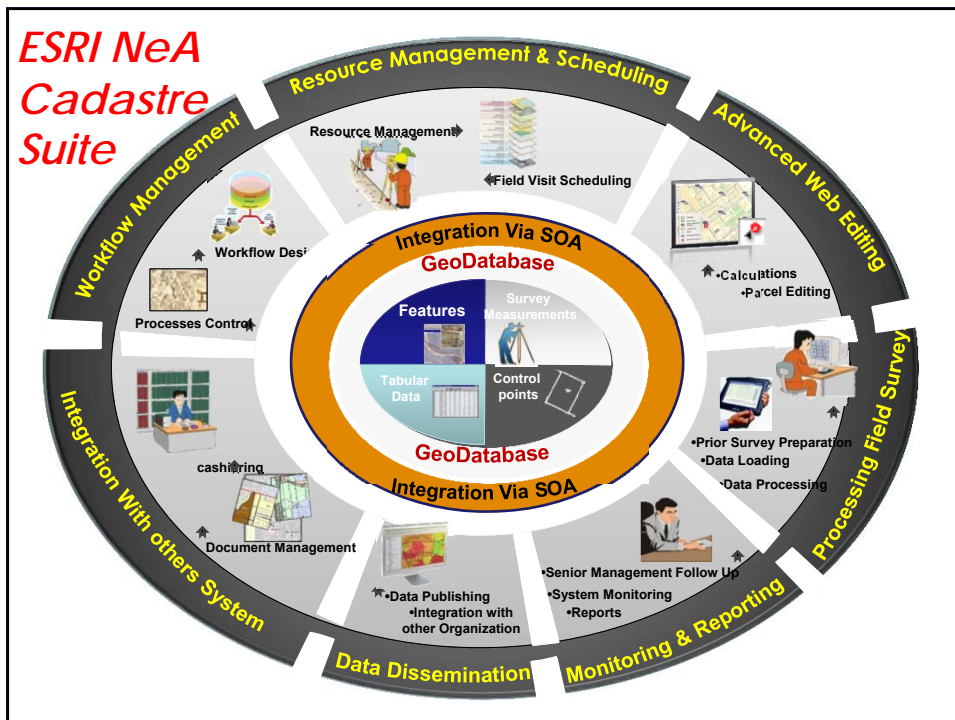
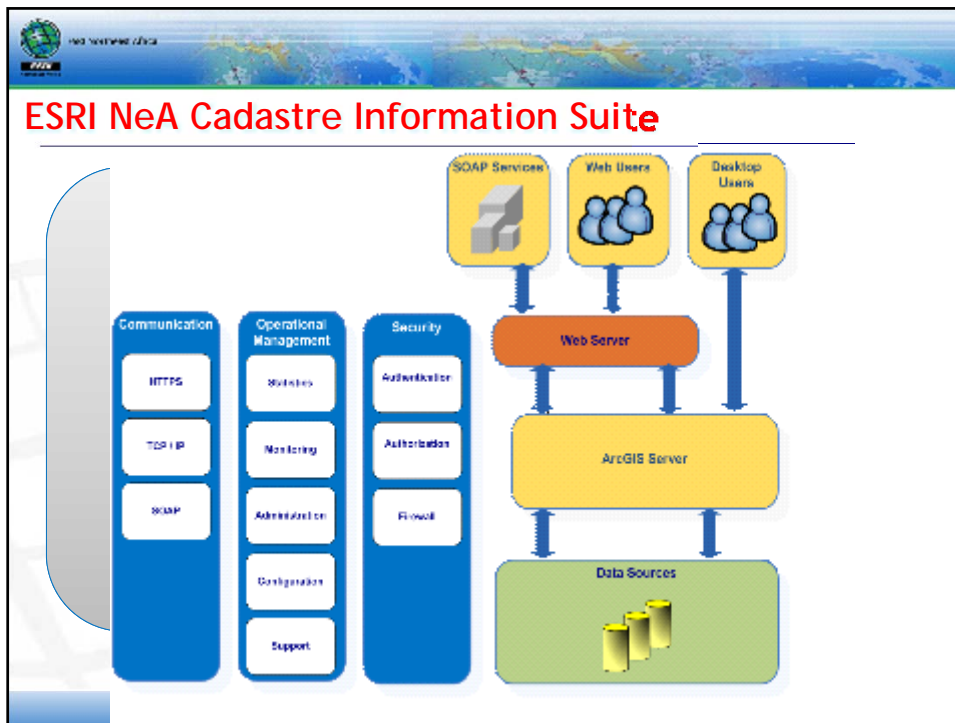
---

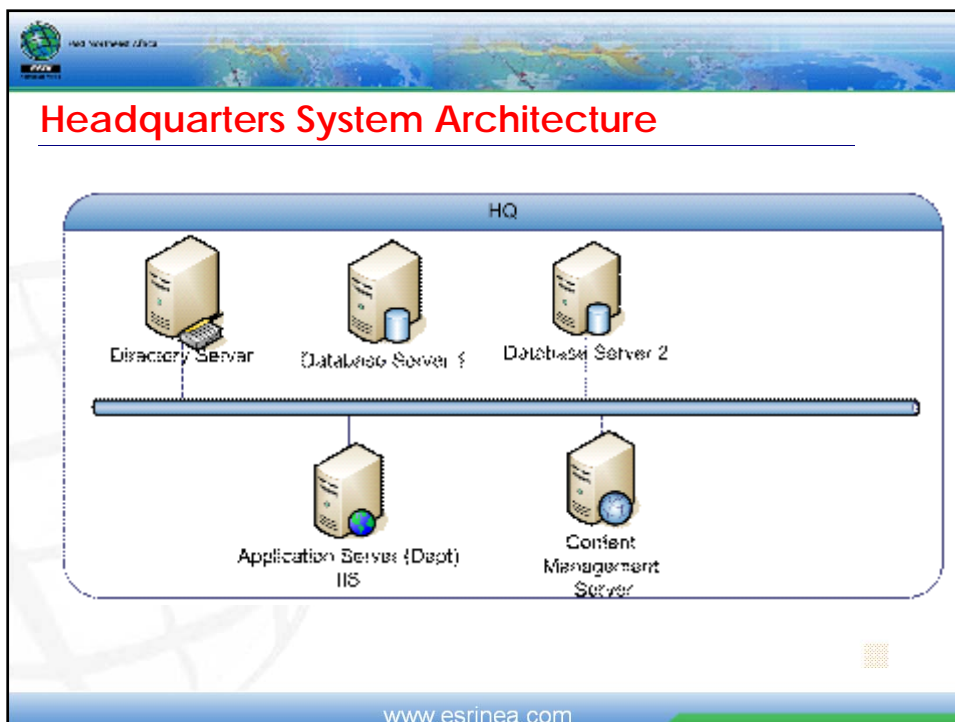
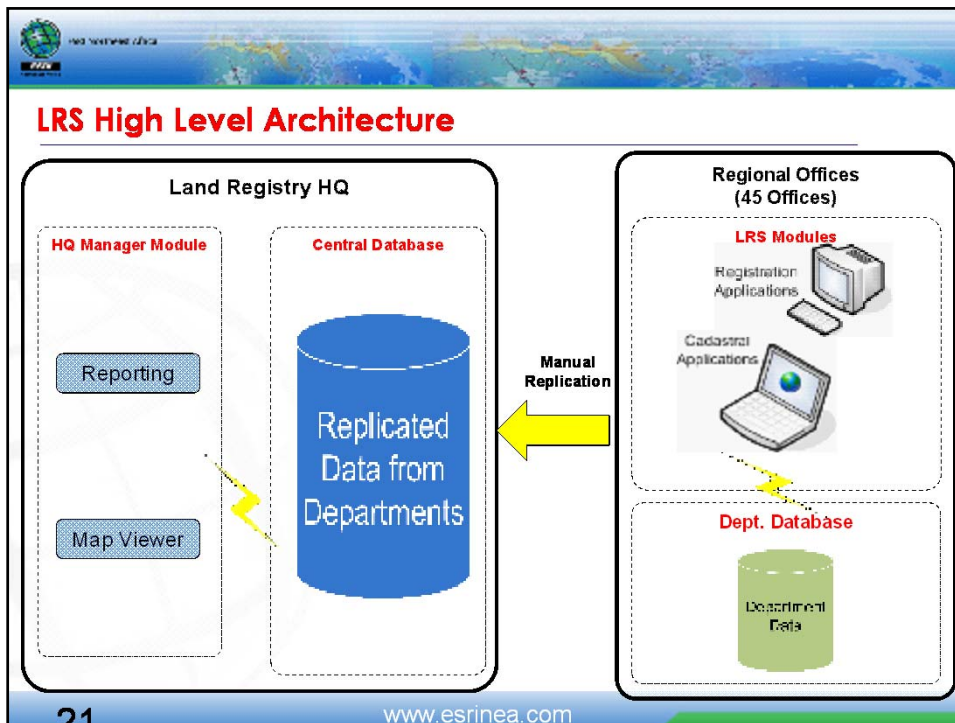
## System Overview

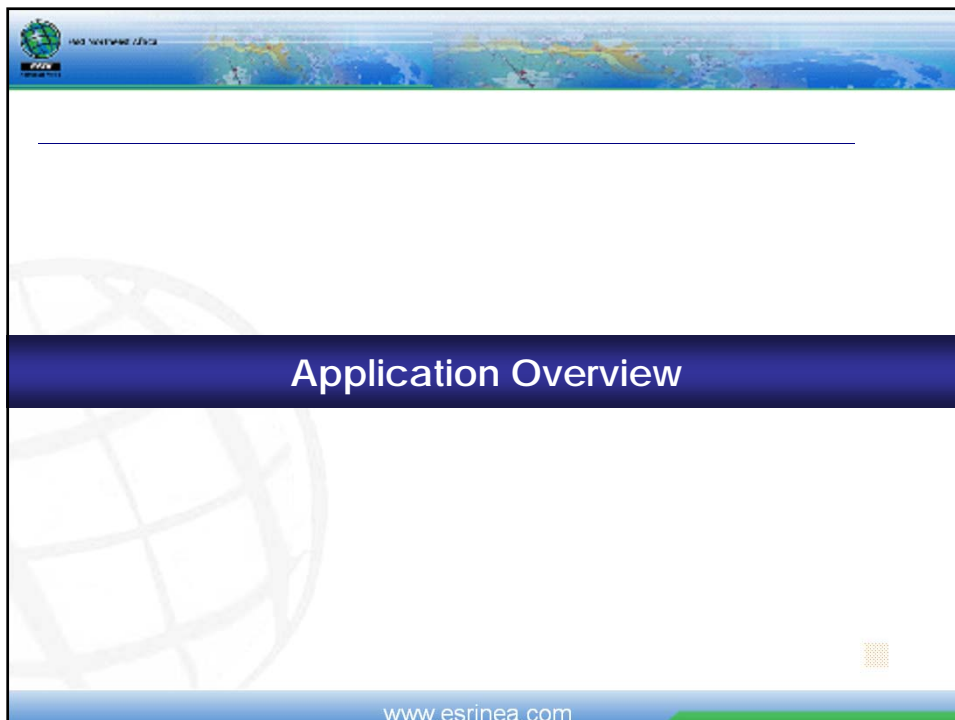
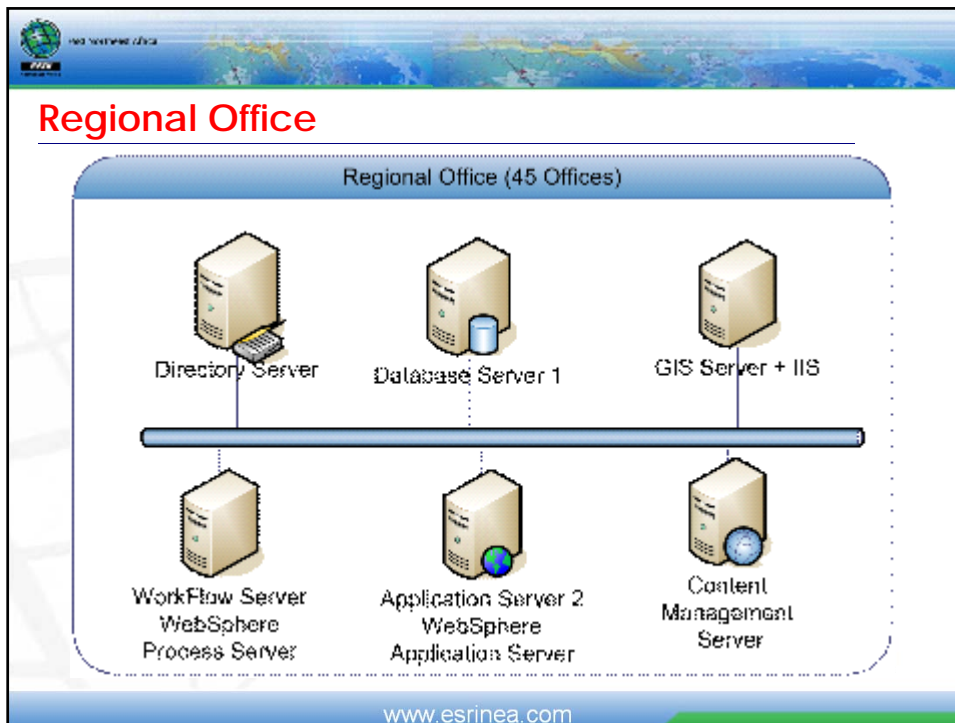
[www.esrinea.com](http://www.esrinea.com)







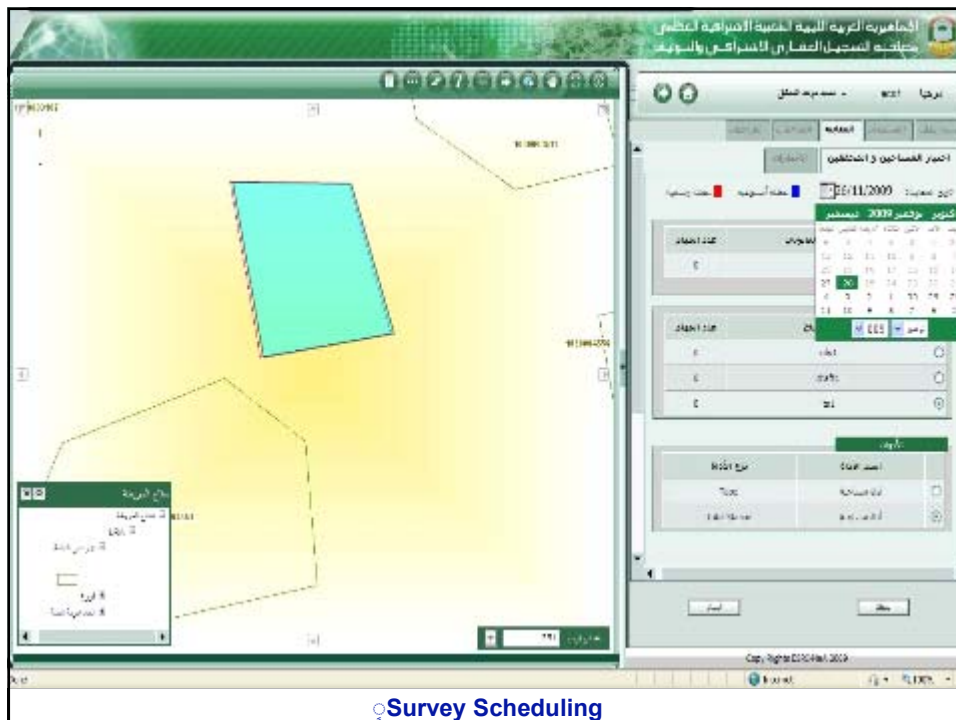






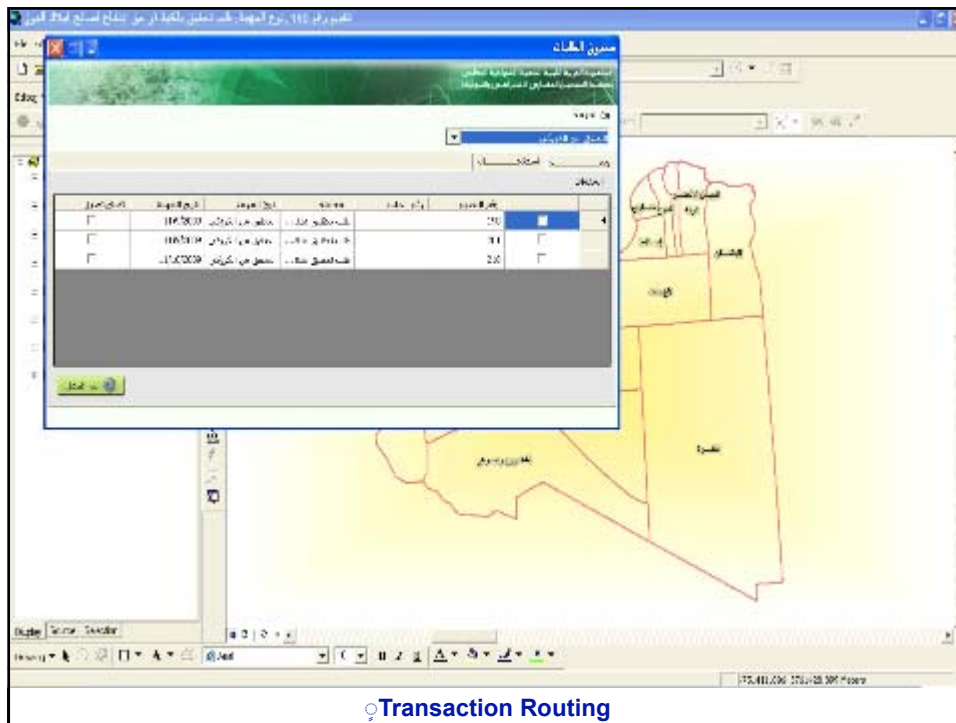


Transaction Attachments Archiving

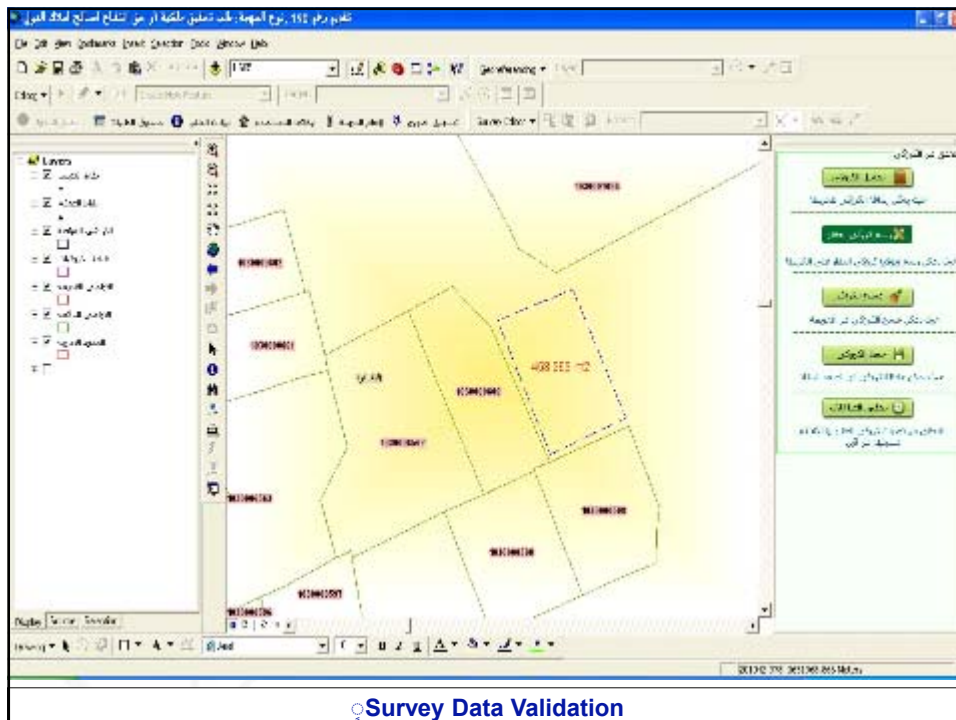


Survey Scheduling





Transaction Routing



Survey Data Validation



