

11 – 16 April 2010

## Seismic Performance Analysis of Utility Lifeline Networks in Istanbul, Turkey

Hüseyin Can ÜNEN, Himmet KARAMAN, Muhammed ŞAHİN, Amr S. ELNASHAI



Istanbul Technical University (ITU)  
Department of Geomatics  
İstanbul / TURKEY



## Network Interdependency



**Interdependency:** A bidirectional relationship between two infrastructures through which the state of each infrastructure influences or is correlated to the state of the other.

Or

The connections among agents in different infrastructures in a general system of systems.

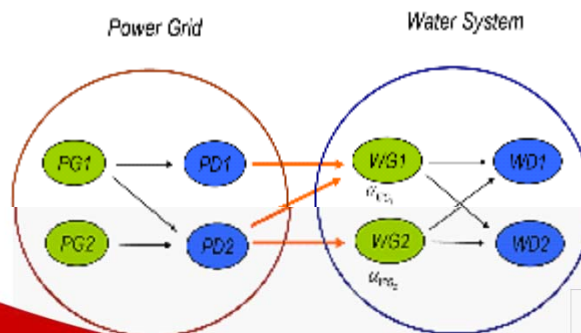
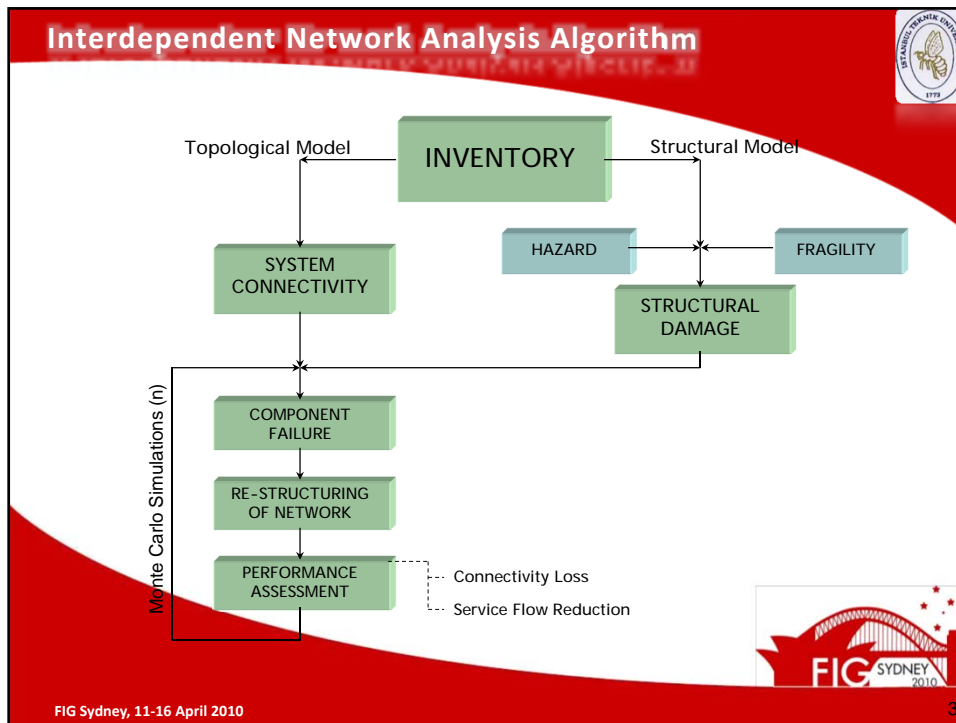
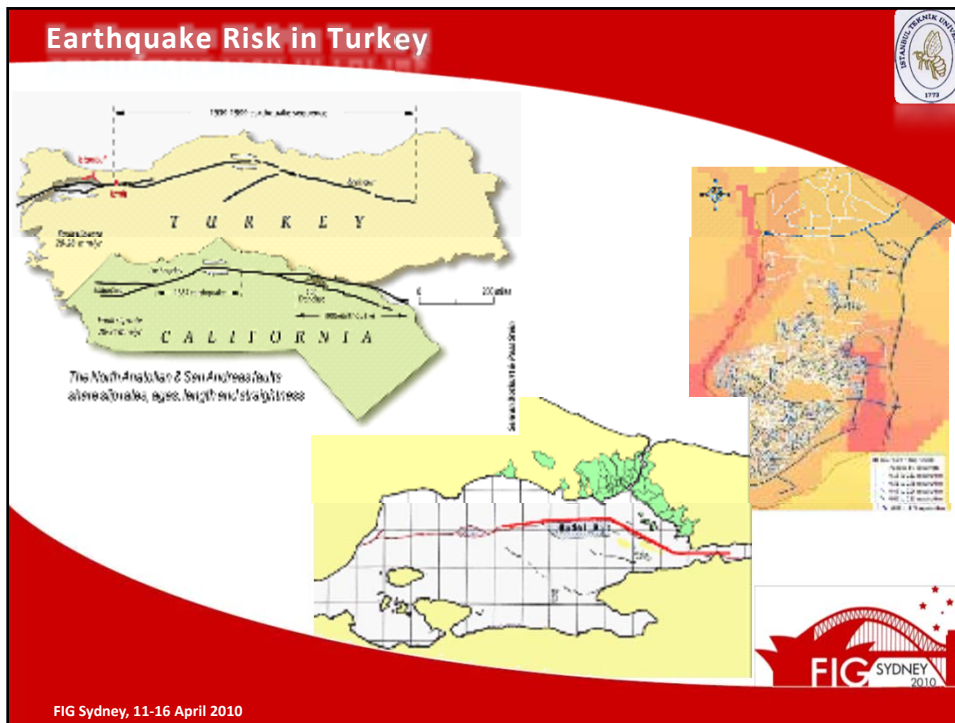


FIG Sydney, 11-16 April 2010



- ## System Outcomes
- When the expected damage to pipelines, facilities, buildings, and system performance are known, they can be used for:
    - Improving resiliency of the networks.
    - Developing retrofit strategies.
    - Estimating the repair cost and workmanship needed.
- FIG SYDNEY 2010
- 3



# THANK YOU


FIG Sydney, 11-16 April 2010