



Agenda 21 – the challenge to sustainable local authorities. Conclusions of a countrywide evaluation in Bavaria

Dipl.-Ing. Rolf MEINDL
Prof. Holger MAGEL Germany

TS.24.3 Planning for Rural and Urban Communities
Dipl.-Ing. Rolf MEINDL, Prof. Holger MAGEL
Agenda 21 – the challenge to sustainable local authorities. Conclusion of a countrywide evaluation in Bavaria
From Pharaohs to Geoinformatics FIG Working Week 2005 and GSDI-8
Cairo, Egypt April 16-21, 2005



I. Analytical phase

Evaluation module	Implementation
1. Analysis of the starting point	1. Analysis of relevant literature
2. Analysis of the evaluation of the local Agenda 21	2. Interview of experts
3. Analysis of structure and process	3. Interview of all local authorities with questionnaire
4. Analysis of factors of performance	4. Analysis of seven local authorities
5. Editing of the findings	5. Summary of the findings

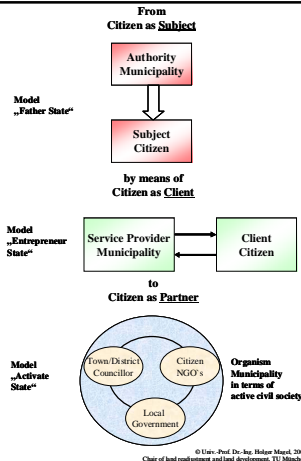
TS.24.3 Planning for Rural and Urban Communities
Dipl.-Ing. Rolf MEINDL, Prof. Holger MAGEL
Agenda 21 – the challenge to sustainable local authorities. Conclusion of a countrywide evaluation in Bavaria
From Pharaohs to Geoinformatics FIG Working Week 2005 and GSDI-8
Cairo, Egypt April 16-21, 2005



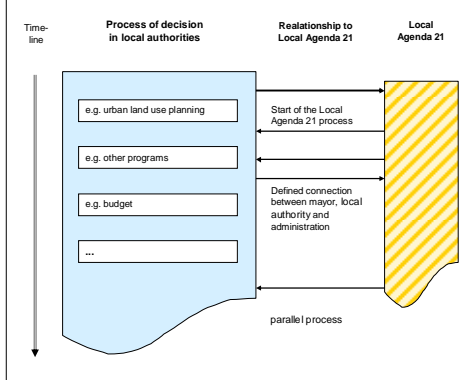
2. Strategical phase

Evaluation module	Implementation
6. Formulation of theses	6. Reverse the deficit findings; Implementation of a workshop with experts
7. Formulation of measures	7. Propose a catalogue of measures
8. Formulating of a new approach	8. Combine the local Agenda 21 with the vision of a sustainable civil society
9. Formulating of three strategic models	9. Describe three focal points for further development
10. Formulating of recommended actions	10. describe recommended actions

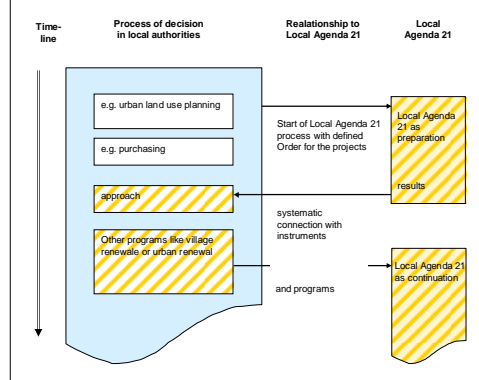
TS.24.3 Planning for Rural and Urban Communities
Dipl.-Ing. Rolf MEINDL, Prof. Holger MAGEL
Agenda 21 – the challenge to sustainable local authorities. Conclusion of a countrywide evaluation in Bavaria
From Pharaohs to Geoinformatics FIG Working Week 2005 and GSDI-8
Cairo, Egypt April 16-21, 2005



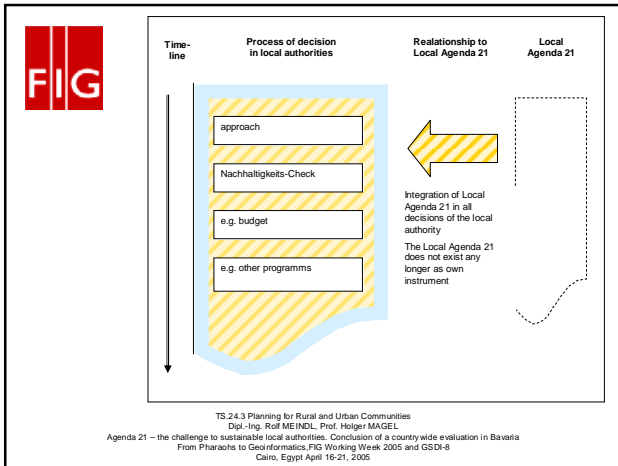
© Uric-Prof. Dr.-Ing. Holger Magel, 2004
Chair of land management and land development, TU München



TS.24.3 Planning for Rural and Urban Communities
Dipl.-Ing. Rolf MEINDL, Prof. Holger MAGEL
Agenda 21 – the challenge to sustainable local authorities. Conclusion of a countrywide evaluation in Bavaria
From Pharaohs to Geoinformatics FIG Working Week 2005 and GSDI-8
Cairo, Egypt April 16-21, 2005



TS.24.3 Planning for Rural and Urban Communities
Dipl.-Ing. Rolf MEINDL, Prof. Holger MAGEL
Agenda 21 – the challenge to sustainable local authorities. Conclusion of a countrywide evaluation in Bavaria
From Pharaohs to Geoinformatics FIG Working Week 2005 and GSDI-8
Cairo, Egypt April 16-21, 2005



Conclusion

FIG

- Local authorities need a comprehension of the necessity, goals, benefit, order and responsibility of Agenda 21.
- Local authorities need standards for sustainable development in their field of responsibility. Local authorities must achieve real sustainable effects.
- Local sustainability doesn't refer only to environmental topics. It must be at the same level with economic and social topics as well as global equity.
- Local authorities have to combine the local Agenda 21 and other communal instruments.

TS.24.3 Planning for Rural and Urban Communities
Dipl.-Ing. Rolf MEINDL, Prof. Holger MAGEL
Agenda 21 – the challenge to sustainable local authorities. Conclusion of a countrywide evaluation in Bavaria
From Pharaohs to Geoinformatics FIG Working Week 2005 and GSDI-8
Cairo, Egypt April 16-21, 2005

Conclusion

FIG

- The local Agenda 21 must be supported ideally, financially and personally.
- Agenda processes need a closely cooperation with administrations, associations and citizens. Local authorities have to take over the active part in the process.
- Agenda processes need an integrated conception with an overall concept, action program as well as quality management for the whole process.
- Rules and responsibility have to be defined. They must be transparent for all participants.

TS.24.3 Planning for Rural and Urban Communities
Dipl.-Ing. Rolf MEINDL, Prof. Holger MAGEL
Agenda 21 – the challenge to sustainable local authorities. Conclusion of a countrywide evaluation in Bavaria
From Pharaohs to Geoinformatics FIG Working Week 2005 and GSDI-8
Cairo, Egypt April 16-21, 2005

Conclusion

FIG

- Agenda processes need continual success control.
- Contributions to sustainable development must be assessable and assimilable.
- Agenda processes need methodical, professional and social qualified specialists in all phases.
- Necessity and advantages of sustainable development must be communicated with the local participants.

TS.24.3 Planning for Rural and Urban Communities
Dipl.-Ing. Rolf MEINDL, Prof. Holger MAGEL
Agenda 21 – the challenge to sustainable local authorities. Conclusion of a countrywide evaluation in Bavaria
From Pharaohs to Geoinformatics FIG Working Week 2005 and GSDI-8
Cairo, Egypt April 16-21, 2005

FIG

Thank you very much!

TS.24.3 Planning for Rural and Urban Communities
Dipl.-Ing. Rolf MEINDL, Prof. Holger MAGEL
Agenda 21 – the challenge to sustainable local authorities. Conclusion of a countrywide evaluation in Bavaria
From Pharaohs to Geoinformatics FIG Working Week 2005 and GSDI-8
Cairo, Egypt April 16-21, 2005